

ENDODONTICS

DENITAI  
**CATALOG**



## GLOBAL COMPETENCE FOR MORE THAN 50 YEARS

HYGENIC, PARAPOST and ROEKO are internationally renowned endodontic brands by COLTENE. Over the last years the portfolio of endo products from root canal shaping to obturation has been successfully enlarged and optimized, thus offering perfectly attuned equipment for both, endodontists and general practitioners.

By introducing the highly innovative HyFlex CM Niti-Files in 2010, COLTENE has set new benchmarks for breakage resistance and flexibility. The innovative material ensures perfect root canal adaptation with bending properties similar to stainless steel files. The controlled memory effect allows files to regain their original shape simply by autoclaving after the treatment. The new technology attracted intense scientific interest resulting in numerous publications on the excellent properties of HyFlex CM. The CanalPro family is complete with a cordless endodontic motor, the fully automated Apex Locator and a wide range of rinsing solutions. For safe handling, these solutions, as well as accessories such as irrigation syringes and filling station are clearly color coded.

Paper points by HYGENIC and ROEKO are produced fully automatically and are reliably absorbent, true to size and of highest quality. Efficient and safe obturation can be achieved either with GuttaFlow2, a unique cold filling system, which combines gutta percha and sealer in one product, or with Guttapercha points by HYGENIC and ROEKO.

The ParaPost X system, a market leader in many markets for decades, offers the perfect post for every clinical situation. One range of drills serves all techniques and indications, from metal-free restorations with ParaPost Fiber Posts or classical metal posts for direct and labtechnique. And last but not least the multifunctional ParaCore serves for post cementing, core build-up and crown and bridge cementation, and thus perfectly rounds off the endodontic product range.

## COMPANY

Coltene is a global leader in the development, manufacture and sale of consumables and small-size equipment for dental treatment applications.

The Dental Group offers a wide range of products, encompassing six segments – solutions for almost all dental treatments. The complete endodontology programme includes root canal preparation with files and rinsing solutions, obturation and post systems. The next extensive range is centred entirely on restorative filling therapy. This particularly includes temporary and permanent filling materials, as well as adhesive systems and polymerisation lamps. Prosthetics represents a further main area. It includes a wide spectrum of condensation and addition cross-linking impression materials. The segments of treatment aids, infection control and redating instruments round off the programme.

COLTENE has time and time again developed pioneering innovations for over 50 years, and ROEKO for over a 100 years who offer the user first grade dental solutions.

Today the COLTENE Group operates production facilities in Switzerland, Germany, Hungary, Brazil and the USA. It maintains a worldwide sales network with its own subsidiaries and distribution partners in over 120 countries. COLTENE therefore serves dentists, dental technicians, opinion leaders and universities with tailored quality products and services – worldwide.

[www.coltene.com](http://www.coltene.com)

## HISTORY

1910

1920

1930

1940

1950

1960



### ENDODONTICS

1962	ParaPost
1990	ParaPost X-System
1997	ROEKO GP/PP Top color
1999	RoekoSeal Automix 2000
2000	ParaPost Fiber White
2004	GuttaFlow
2011	HyFlex CM



### RESTORATION

1978	Oralloy
1983	BRILLIANT
1988	BRILLIANT Esthetic Line
1991	A.R.T. Bond
1998	SYNERGY
2001	ParaCore, MIRIS
2006	SYNERGY D6
2007	One Coat 7.0
2008	MIRIS 2
2011	COMPONEER



### PROSTHETICS

1974	Coltex/Coltoflax
1975	PRESIDENT
1980	Rapid
1992	Speedex
1995	PRESIDENT microSystem
2000	Jet Bite
2001	AFFINIS
2005	JET BLUE BITE
2006	AFFINIS PRECIOUS

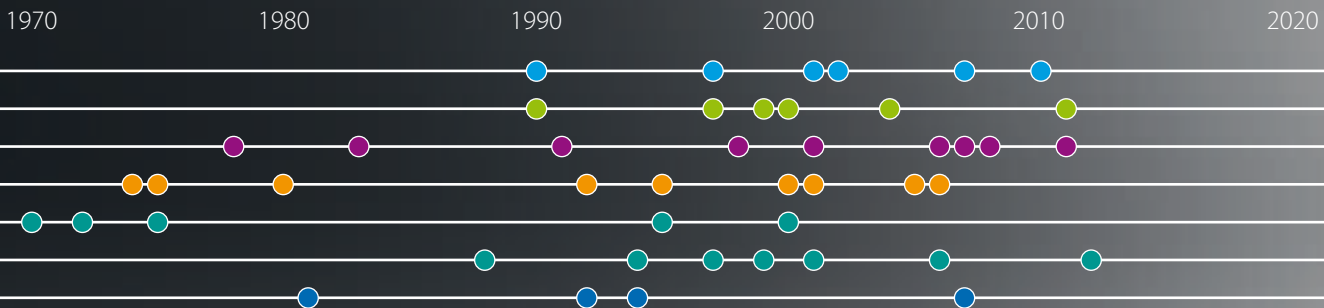
## COMPANY FOUNDATIONS

- 1910 ROEKO GmbH & Co.KG, DE
- 1953 Vigodent, BR
- 1956 Whaledent Inc., US
- 1963 COLTENE AG, CH



## MERGERS

- 1990 Whaledent Inc., US
- 1997 HYGENIC Dental, US
- 2001 DIATECH, CH
- 2002 ROEKO, DE
- 2007 CEI, US
- 2010 Vigodent, BR



### TREATMENT AUXILIARIES

- 1955 Luna
- 1964 Paredisroll
- 1970 Cotton pellets
- 1972 Surgitip
- 1975 Gelatamp
- 1995 Dental Dam Silicone non latex
- 2000 Flexi Dam non latex

### INFECTION CONTROL

- 1988 BioSonic UC 1 Cleaner
- 1994 Steri-Quick
- 1997 Predicta Quick non latex
- 1999 Simplex-Plus Maxi
- 2001 BioSonic US 100 Scaler
- 2006 BioSonic UC 125
- 2012 Predicta Active Carbon

### ROTARY INSTRUMENTS

- 1981 ML Diamonds
- 1992 Carbides
- 1994 Top Spin
- 2007 Speedster



	CATEGORY	PRODUCT	BRAND	PAGE
STEP 1	<b>Diagnosis</b>	Cold spray	ROEKO	10
STEP 2	<b>Infection control</b>	Dental Dam Dental Dam Kits Dental Dam Accessories Dental Dam Clamps	ROEKO HYGENIC	14
STEP 3	<b>Access</b>	Preparation Kit	DIATECH	27
STEP 4	<b>Debridement</b>	Hand Files Hand Files Accessories	HYGENIC ROEKO	29
STEP 5	<b>Working length measurement</b>	Apex Locator	CanalPro	34
STEP 6	<b>Canal preparation</b>	NiTi-Files NiTi-Files Accessories Cordless Handpiece	HyFlex HyFlex CanalPro	39
STEP 7	<b>Irrigation</b>	Rinsing Solutions Rinsing Accessories	CanalPro CanalPro	44
STEP 8	<b>Drying</b>	Paper Points Aspirator Tips	ROEKO ROEKO	49
STEP 9	<b>Medicamentation</b>	Calcium Hydroxide Points Chlorhexidine Points	ROEKO ROEKO	55
STEP 10	<b>Temporary restoration</b>	Temporary filling material	Coltosol DuoTEMP	59
STEP 11	<b>Obturation</b>	Root canal sealer Root canal filling material Guttapercha Points Accessories	RoekoSeal GuttaFlow ROEKO ROEKO	62
STEP 12	<b>Definite restoration</b>	Cylindrical Metal-Posts Cylindrical and conical Fiber-Posts Cylindro-conical Posts Dual-cured composite resin system	ParaPost ParaPost TENAX ParaCore	73



## Step 1 Diagnosis



Obtaining an accurate diagnosis is a critical step in endodontic treatment. In addition to reviewing the patient's chief complaint, medical history, dental history, and history of symptoms, objective findings must be collected and radiographs must be reviewed in order to make a definitive diagnosis.



Percussion Test



Icing the Pellet with Endo-Frost



Cold testing with Endo-Frost

The normal response of nerve fibers can be tested by stimulating the nerve endings of the pulp with a cold spray. As a result of this test, the vitality (existing blood flow) of the tooth can be verified.

It's important to note that use of pain relief drugs can cause a false reading (tooth is vital but does not respond to cold) or that a false cold sensation may occur on teeth with an adjacent metal restoration.





# roeko Endo-Frost





### ROEKO Endo-Frost

- Cold spray, 200 ml
- Temperature -50 °C
- Spray nozzle for precise application
- For freezing pellets and dental rolls
- Odorless

#### Endo-Frost

Cold spray, 200 ml

240 000



### ROEKO Endo-Frost Pellets

- Are cooled to test the vitality of the tooth
- Can be used with Solomat dispensers

#### Endo-Frost Pellets

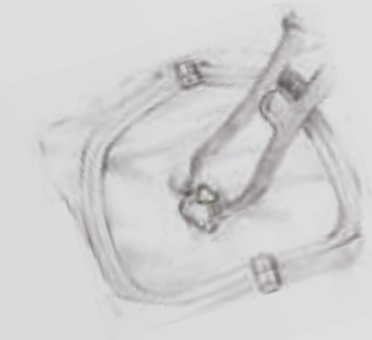
approx. 4 × 4 × 4 mm, 500 pcs

240 001



Infection  
control

**Endodontics**



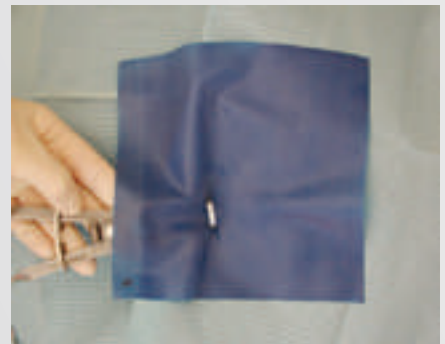
Successful root canal therapy must begin with proper infection control. The Dental Dam is used in dentistry to isolate teeth during dental procedures. Treatment quality significantly increases with the use of the Dental Dam during root canal preparation, changing of medicaments, and obturation because the dental dam allows for an aseptic working environment and retracts the cheek and tongue to allow for optimal viewing. Protecting the mucosa from injury and chemical burns and preventing aspiration of irrigants and instruments, the Dental Dam also ensures that the treatment is delivered safely and efficiently. The use of the Dental Dam is a standard of care with root canal therapy and no endodontic procedure should be performed without the Dental Dam in place.



Marking Dam



Punching Dam



Inserting Clamp



Applying Dam



Flossing Dam



Dam Applied

With root canal therapy, single-tooth isolation is ideal when possible. In situations where a tooth is fractured and a clamp cannot easily be stabilized on the tooth or a tooth has proximal decay, a split-dam technique can be used.



# Dental Dam





### Hygenic® Framed Flexi Dam non latex

- Convenient built-in-frame - saves time
- Highly elastic Flexi Dam material - tear resistant and easy placement
- Latex free - allergy free
- Odourless - patient conform



Size 100 × 105 mm, medium, 20 pcs

	violet
	H00750

### Hygenic® Flexi Dam® non latex

- Low modulus of elasticity
- Individual sheets without powder
- Extra strength and flexible
- Latex free
- Odourless



Size 152 × 152 mm (6" × 6"), medium, 30 pcs

	violet	green
	H09945	H09946

### Hygenic® Dental Dam non latex

- 100% latex free
- Similar tear resistance to natural rubber dam
- Powderfree
- Minimum of three years shelf life
- Color reflective



Size 127 × 127 mm (5" × 5") (children), Size 152 × 152 mm (6" × 6") (adult), medium, green, 15 sheets

	For children	For adults
	H09928	H09105



### Hygenic® Fiesta® Dental Dam (latex)

- Natural rubber latex
- Assorted purple, blue and pink sheets
- Fresh fruit scent for patient and staff comfort



Size 127 × 127 mm (5" × 5") (children) / Size 152 × 152 mm (6" × 6") (adult)		
	For children (52 sheets)	For adults (36 sheets)
thin	H04640	H04639
medium	H04641	H04642
heavy	H04643	H04644

### Hygenic® Dental Dam (latex)

- Natural rubber latex
- Powdered
- Tear-resistant



For children, ready cut, 52 sheets				
	light	dark	green	blue
thin	H00523	H00529	H02141	
medium	H00524	H00530	H02142	H03529
heavy	H00525	H00531	H02143	H07314
extra heavy	H00526		H02144	

For adults, ready cut, 36 sheets				
	light	dark	green	blue
thin	H00533	H00538	H02146	
medium	H00534	H00539	H02147	H03530
heavy	H00535	H00540	H02148	H07315
extra heavy	H00536	H00541	H02149	



Convenience Dam Pack for children 127 × 127 mm (5" × 5"), 364 sheets				
	light	green	dark	Fiesta
thin	H04236	H04240		
medium	H04237	H04241	H04239	H07316

Convenience Dam Pack for adults 152 × 152 mm (6" × 6"), 360 sheets				
	light	green	dark	Fiesta
thin	H04242	H04246		
medium	H04243	H04247	H04245	H07317



### Hygenic® Dental Dam on roll



Dental Dam on roll 127 mm × 6.7 m for children, 152 mm × 5.5 m for adults				
	light (children)	light (adult)	dark (adult)	green (adult)
thin	H00503			H02174
medium	H00504	H00514	H00519	H02175
extra heavy				H02177

### ROEKO Flexi Dam non latex

- Latex free
- Powder free
- More tear resistant than latex
- Highly elastic for effective isolation
- No unpleasant odor
- Violet color helps distinguish from latex dams



Flexi Dam non latex 150 × 150 mm, 0.5 mm thick, 30 pcs + template	
violet	390 035
blue	390 033

### ROEKO Elasti-Dam powder free\*

- Latex
- More tear resistant than standard latex dam
- Powder free
- Controlled low level of protein allows for less exposure to allergenic particles and reduced risk for development of latex allergy



	For children	For adults
medium	6001 3795	6001 3793
strong	6001 3796	6001 3794

For adults, ready cut, 152 × 152 mm green, 36 pcs  
For children, ready cut, 127 × 127 mm, blue, 36 pcs

\* acc. to EN 455-3 < 5 mg/sheet 1) up to 44% more elastic, acc. to internal tests





### ROEKO Dental Dam Latex



#### Dental Dam latex 150 × 150 mm; 36 pcs

thin	390 020
medium	390 021
heavy	390 022

#### Dental Dam Set

Dental Dam Set		390 000
Punch Type Ainsworth	1 pc	
Clamp forceps Type Ivory	1 pc	
Clampset	1 pc	
Flexi Dam non latex with template	30 pcs	
Frame acc. to Young	1 pc	

### Hygenic® Dental Dam Kits



#### Complete Kits with punch and forceps

##### Winged or Wingless clamps

Starter Kit with Winged Clamps 6" × 6" (152 × 152 mm) Dam – green medium; 36 sheets; 6" (152 mm) Plastic frame (H01414); Fiesta 9 winged color-coded clamp pack; 6" Template; Wedjets Cord (small); Dental dam punch; Dental dam forceps	H02778
Starter Kit with Winged Clamps Plastic carrying case ; 6" × 6" (152 × 152 mm) Dam – green medium; 36 sheets; 6" (152 mm) Plastic frame (H01414); Fiesta 9 winged color-coded clamp pack; 6" Template; Wedjets Cord (small); Dental dam punch; Dental dam forceps	H02782
Complete Kit with Wingless Clamps 6" × 6" (152 × 152 mm) Dam – green medium; 36 sheets; 6" (152 mm) Plastic frame (H01414); Fiesta 9W wingless color-coded clamp pack; 6" Template; Wedjets cord (small); Dental dam punch; Dental dam forceps	H02790

#### Standard Kits without punch and forceps

##### Winged or Wingless clamps

Kit with Winged Clamps 6" × 6" (152 × 152 mm) Dam – green medium; 36 sheets; 6" (152 mm) Plastic frame (H01414); Fiesta 9 winged color-coded clamp pack; 6" Template; Wedjets Cord (small)	H02779
Kit with Wingless Clamps 6" × 6" (152 × 152 mm) Dam – green medium; 36 sheets; 6" (152 mm) Plastic frame (H01414); Fiesta 9W wingless color-coded clamp pack; 6" Template; Wedjets Cord (small)	H02792
Kit with Wingless Clamps and Metal Frame 6" × 6" (152 × 152 mm) Dam – green medium; 36 sheets; 6" (152 mm) Metal frame (H07083); Fiesta 9W wingless color-coded clamp pack 6" Template; Wedjets cord (small)	H02793



### Hygenic® Complete Kit with Brinker Clamps



Complete Kit	
Hygenic Complete Kit with Brinker Clamps 5" x 5" (127 x 127 mm) Dam – green medium; 52 sheets ; 5" (127 mm) Plastic frame (H01416); Brinker universal clamp set; 5" Template; Latex Wedjets cord (small); Dental dam punch; Dental dam forceps; Non-latex Wedjets Stabilizer Cord; Instructional CD (in English)	H09715

### Hygenic® Wedjets® Stabilizing Cord

- Latex-available in 3 sizes
- Non-latex-available in 2 sizes
- Alternative to conventional clamp method of securing dental dam
- Eliminates need for use of a rubber dam clamp



Wedjets Stabilizing Cord					
Latex			Non-Latex		
extra small, blue	7 ft. (2.1 m)	H08040	small, lime green	7 ft. (2.1 m)	H06524
small, yellow	7 ft. (2.1 m)	H06522	large, aqua blue	7 ft. (2.1 m)	H06525
large, orange	7 ft. (2.1 m)	H06523			

### Hygenic® Dental Dam Frame

- Autoclavable



Dental Dam Frame		
Ostby plastic frame – radiolucent	6" (152 mm)	H00560
U-shaped plastic frame – radiolucent	5" (127 mm)	H01416
	6" (152 mm)	H01414
U-shaped metal frame	5" (127 mm)	H07082
	6" (152 mm)	H07083



### ROEKO Metal frame

- U-shaped frame made of high quality chrome nickel steel
- Prongs along its length hold Dental Dam secure
- Can be sterilized in autoclave or dry heat sterilizer



Metal frame

390 040

### ROEKO Plastic frame, foldable

- Radiolucent and oval in shape
- Can be folded to allow for taking xrays and aspiration of saliva
- Autoclavable up to 134°C



Plastic frame, foldable

390 041

### ROEKO Template

- Durable plastic
- Aids with proper placement on the Dental Dam

Template

390 042

### ROEKO Clamp Forceps

- Can be sterilized in the autoclave or dry heat sterilizer
- Allow for secure placement of clamp to the tooth
- High quality
- Easy to handle



Clamp Forceps

390 011

### ROEKO Punch

- Can be sterilized in the autoclave or dry heat sterilizer
- 8 hole size options
- Easy to handle
- High quality



Punch

390 010



### Hygenic® Extended Reach Punch

- 12 mm greater reach than traditional punches - ideal for use with pre-framed dental dams
- Two different sized dies - #2 for anterior teeth and #4 for posterior teeth
- Easy to change dagger and dies that do not require use of any additional tools



Extended Reach Punch Punch with dagger	
#2 and #4 die of each	H01253
<b>Accessories:</b>	
#2 die	H01254
#4 die	H01255
dagger	H01256

### Hygenic® Dental Dam Forceps



Dental Dam Forceps	
Stainless Steel	H01262

### Hygenic® Dental Dam Punch



Dental Dam Punch	
Stainless Steel	H01261

### Hygenic® Ora-Shield® Dental Dam Napkins

- Prevent direct contact of dental dam with sensitive skin
- Soft, non-woven fabric
- Allow for maximal absorption of saliva, water and perspiration



Ora-Shield Dental Dam Napkins 50 pcs	
Fits frame sizes 5" (127 mm) and 6" (152 mm)	H01415
Fits Holder (large size)	H00841



### Hygenic® Dental Dam Stamp

- Marks standard tooth position on Dental Dam
- Compatible with most office ink pads



Dental Dam Stamp		
5" x 5"	(127 x 127 mm)	H01442
6" x 6"	(152 x 152 mm)	H01443

Dental Dam Template		
5" x 5"	(127 x 127 mm)	H01440
6" x 6"	(152 x 152 mm)	H01441

### Hygenic® Dental Dam Clamp-Sets

- Available winged or wingless



Dental Dam Clamp-Sets		
System-9 Winged Clamp Pack		H02701
Fiesta 9 Color-coded Clamp Pack winged		H09966
Fiesta Color-coded Clamp Organizer		H09956
Brinker (tissue retraction) Clamp Pack		H01054
Fiesta 9W Color-coded Clamp Pack wingless		H02801

### Hygenic® Gloss Finish Wingless Clamps

- Wingless Clamps are designated with a "W" (wingless) for easy identification.

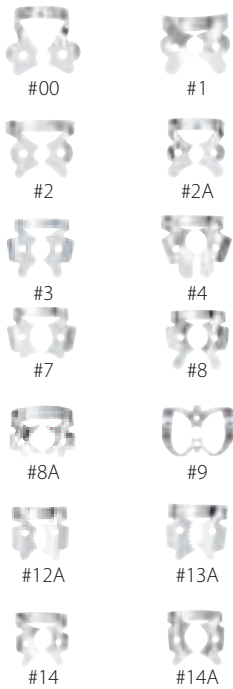


Gloss Finish Wingless Clamps		
#212	Anterior teeth	H07792
#W00	Maxillary and mandibular premolar and anterior teeth	H02769
#W2	Premolars and maxillary incisors	H02768
#W2A	Premolars and maxillary incisors	H02775
#W3	Flat jawed, small molars	H03814
#W7	Flat jawed, general purpose, mandibular molars	H02765
#W8	General purpose, maxillary molars	H02767
#W8A	Downward sloped jaws for small, partially erupted molars	H02766
#W9	Anterior teeth	H02770
#W14	For partially erupted or irregularly shaped molars	H02774
#W14A	Downward sloped jaws for large, partially erupted molars	H02764
#W56	Universal molar clamp	H03815



### Hygenic® Gloss Finish Winged Clamps

- Allow for placement of dental dam, clamp and frame as one unit



Gloss Finish Winged Clamps		
#00	Maxillary and mandibular premolars and anterior teeth	H02762
#1	General purpose, maxillary premolars	H02703
#2	Premolars and maxillary incisors	H02761
#2A	Premolars and maxillary incisors	H05688
#3	Flat jawed, small molars	H05689
#4	Small maxillary molars, deciduous teeth	H02704
#7	Flat jawed, general purpose, mandibular molars	H02758
#8	General purpose, maxillary molars	H02760
#8A	Downward sloped jaws for small, partially erupted molars	H02759
#9	Anterior teeth	H02763
#12A	Serrated jaw clamp, maxillary left molars	H02706
#13A	Serrated jaw clamp, maxillary right molars	H02705
#14	For partially erupted or irregularly shaped molars	H05690
#14A	Downward sloped jaws for large, partially erupted molars	H02757

### Hygenic® Fiesta® Color Coded Matte Finish Winged Clamps

- Color coded for easy identification
- Non-reflective
- Color coded stainless steel organizer



Fiesta Color Coded Matte Finish Winged Clamps		
#2	● Premolars and maxillary incisors	H09957
#2A	● Premolars and maxillary incisors	H09958
#4	● Small maxillary molars, deciduous teeth	H09959
#7	● Flat jawed, general purpose, mandibular molars	H09960
#8A	● Downward sloped jaws, small, partially erupted molars	H09961
#9	● Anterior teeth	H09962
#12A	● Serrated jaw clamp, maxillary left molars	H09963
#13A	● Serrated jaw clamp, maxillary right molars	H09964
#14A	● Downward sloped jaws for large, partially erupted molars	H09965



### Hygenic® Brinker Clamps (Tissue Retractors)

- Provide maximal retraction without laceration of gingival tissues
- Available as a set or sold individually

Brinker Clamps (Tissue Retractors)		
	Brinker Universal Clamp Set (one of each B-1, B-2, B-3, B-4, B-5, B-6)	H01054
B-1	Mandibular molars	H01048
B-2	Maxillary left molars	H01049
B-3	Maxillary right molars	H01050
B-4	Premolars	H01051
B-5	Premolars and incisors	H01052
B-6	Premolars and incisors	H01053

### Hygenic® Fiesta® Color Coded Matte Finish Wingless Clamps



Fiesta Color Coded Matte Finish Wingless Clamps		
#W2	● Premolars and maxillary incisors	H02794
#W2A	● Premolars and maxillary incisors	H02795
#W3	● Flat jawed, small molars	H02796
#W7	● Flat jawed, general purpose, mandibular molars	H02797
#W8	● General purpose, maxillary molars	H02798
#W8A	● Downward sloped jaws for small, partially erupted molars	H02799
#W9	● Anterior teeth	H02800
#W14A	● Downward sloped jaws for large, partially erupted molars	H02802
#W56	● Universal molar clamp	H02803



## ROEKO Clamps

- Winged clamps allow for placement of Dental Dam and clamp as one unit



### Clamp Set

Clamp #00, #206, #209, #200, #201, #212	390 050
---	---------

### Clamps

#00 Premolar, high bow, narrow jaw	390 051
#206 Maxillary premolars, distinctive concave jaw	390 052
#209 Mandibular premolars, flat clamp mouth	390 053
#200 Mandibular molars	390 054
#201 Maxillary molars, concave jaw shape	390 055
#211 Anterior teeth, double-bow	390 056
#212 Anterior teeth	390 057



Access

Endodontic

Debridement

Working length measurement



An ideal endodontic access allows for straight-line access to the root canal system, which permits adequate visualization of the root canals and allows for easier placement of files and irrigation needles.

Access can be initiated with a round carbide or fissure bur. For teeth with porcelain or porcelain fused to metal crowns, use of a diamond bur with water spray may be preferred so that risk of porcelain fracture can be minimized. Once penetration of the porcelain is complete, a carbide bur can be used to cut metal and dentin due to its greater cutting efficiency. After the endodontic access is initiated, the access can be extended in axial directions with a flat-ended tapered diamond bur, a standard fissure bur, or a safe-ended bur. Due to the fact that safe-ended burs are non-cutting at the tip, gouging or perforation of the pulpal floor can be prevented by using such burs.



Locating the canal



Remove dentin from pulpal floor



Removal of caries

Locating all canals can be challenging in teeth that have a high degree of coronal calcification. In such instances, using a surgical length carbide bur may be necessary to remove dentin from the pulpal floor. Ultrasonic tips can also be used for more controlled removal of dentin while searching for hidden canals.

Prior to accessing the root canal system, all caries and defective restorations should be removed. The bur that was used to remove caries and restorative materials should be switched and a new bur should always be used to continue with endodontic access.



## Endo Preparation Kit

- Selected by Professor Dr. Gambarini



### Endo Preparation Kit (selected by Prof. G. Gambarini)

250062AA



ISO 001524 014 /  
200808AA

ISO 001 52 018/  
200089AA

ISO 219 524 016 /  
200391AA

ISO 198 524 014 8.0 /  
200435AA

ISO 223 066 /  
235046AA

Fig. No.  
ISO Ø 1/10 mm  
Grit Size

801L  
014  
125 µm

801  
018  
125 µm

851  
016  
125 µm

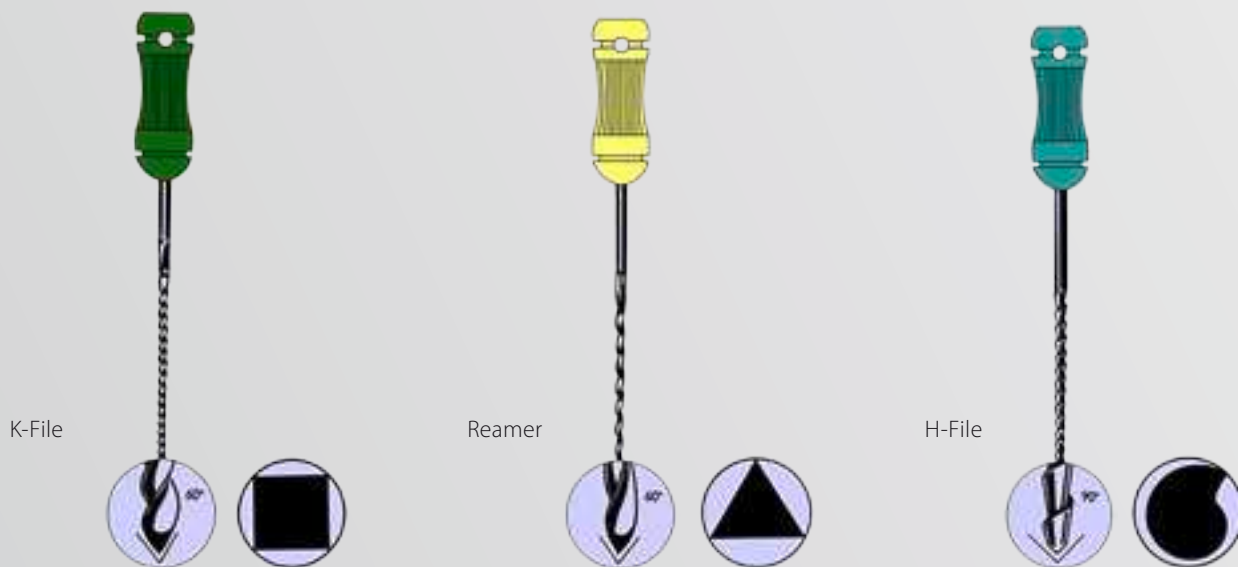
856  
014  
125 µm

C245  
008



Following placement of the rubber dam, disinfecting the working field, and accessing the tooth, debridement of the inflamed or infected pulp tissue is achieved with hand files. The files negotiate the canals to working length and establish a smooth glide path from the canal orifice to the apex. Factors, such as calcification and canal curvature can make debriding

the canals extremely challenging. Appropriate irrigants, such as sodium hypochlorite (NaOCl) and ethylenediaminetetraacetic acid (EDTA), facilitate debridement of the root canal system. Hand instruments that have .02 taper are commonly used to negotiate the canal system to length.



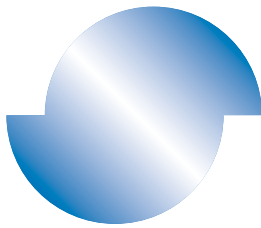
**Such hand instruments are manufactured in three different designs:**

- K-files – Square, triangular or diamond in cross-section and have an increased number of flutes. Work in a rotational motion as well as a pulling motion to clean and enlarge the canals. Primary files used for initial negotiation and debridement of the canals.
- Reamers – Triangular in cross-section and have fewer flutes. Work in a rotational motion to clean the canal system.
- H-files – Milled as opposed to twisted and often used during retreatment to remove gutta-percha. Work in a push-pull motion and cut on the pulling stroke. It is extremely important to note that due to high risk of fracture. A glide path should be created with hand or rotary glide path files.



## Hygenic® Hyflex® X-File®

- Exceptional flexibility in the apical 1/3
- Flexibility protects against ledging, zipping and transportation
- Double-fluted design to maximize cutting efficiency



### Hyflex X-File Nickel Titanium Starter Kit length 25 mm

15	6 pcs	H08438
20	6 pcs	
25	6 pcs	
30	6 pcs	
35	6 pcs	
40	6 pcs	
15-40	6 pcs	

### Hyflex X-File Nickel Titanium 6 pcs

Size	21 mm	25 mm
Assorted 15-40	H08391	H08413
Assorted 45-80	H08392	H08414
15	H08374	H08396
20	H08376	H08398
25	H08378	H08400
30	H08380	H08402
35	H08382	H08404
40	H08384	H08406
45	H08385	H08407
50	H08386	H08408
55	H08387	H08409
60	H08388	H08410
70	H08389	H08411
80	H08390	H08412

### Hyflex X-File Stainless Steel 6 pcs

Size	21 mm	25 mm
08	H08371	H08393
10	H08372	H08394



### ROEKO Root Canal Instruments

- Stainless steel
- Can be sterilized
- Effective cutting



K-Files (ISO) length 25 mm	
Size	6 pcs
Assorted 15–40	381 154
Assorted 45–80	381 458
8	381 008
10	381 010
15	381 015
20	381 020
25	381 025
30	381 030
35	381 035
40	381 040
45	381 045
50	381 050
55	381 055
60	381 060
70	381 070
80	381 080

H-Files (ISO) length 25 mm	
Size	6 pcs
Assorted 15–40	382 154
Assorted 45–80	382 458
8	382 008
10	382 010
15	382 015
20	382 020
25	382 025
30	382 030
35	382 035
40	382 040
45	382 045
50	382 050
55	382 055
60	382 060
70	382 070
80	382 080

Reamers (ISO) length 25 mm	
Size	6 pcs
Assorted 15–40	380 154
Assorted 45–80	380 458
8	380 008
10	380 010
15	380 015
20	380 020
25	380 025
30	380 030
35	380 035
40	380 040
45	380 045
50	380 050
55	380 055
60	380 060
70	380 070
80	380 080



### ROEKO Stops

- Silicone
- Radiopaque



#### Stops

50 pcs

331 000

### ROEKO Endo Gauge

- Compact file holder
- Ideal for setting the length of files and points
- Can be sterilized in autoclave and chemiclave
- Diameter of 48 mm, for 12 instruments with a central well and sponge for used instruments



#### Endo Gauge Type CS

330 002

### ROEKO Sponges

- For use with Endo Gauge CS
- Autoclavable up to 134 °C



#### Sponges

40 pcs

330 003

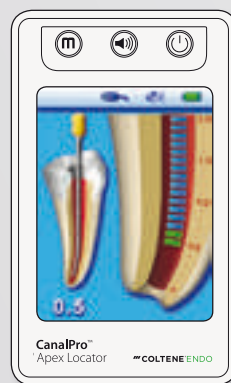


Accurate determination of working length is critical for the success of endodontic treatment. Inspection of pre-operative radiographs, use of tactile sensation, or evaluation of fluid on the tip of paper points may help with estimating working length. Modern electronic length measurement devices, such as the CanalPro Apex Locator, provide a reliable method for confirming working length. Such devices determine the location of the apical constriction with the help of electrical resistance. Electronic length measurement is often more precise than radiographic determination of working length and can be repeated at any time to verify canal length.

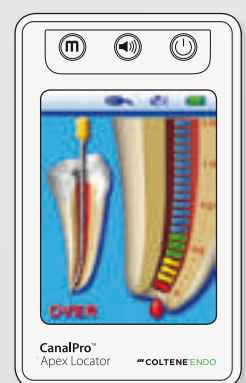
Working length should be measured after coronal flaring has been performed. Many canals have a coronal dentin shelf that, once removed, results in a straighter glide path and shorter working length. Obtaining working length prior to coronal flaring, therefore, can result in a working length that is inaccurate.



File tracking



Working length



Over-instrumentation

**During the use of the CanalPro Apex Locator, any of the following situations should be checked to avoid an erroneous reading:**

- Tooth with immature roots
- Tooth with a perforation
- Excessive fluid in the pulp chamber
- Canal system is too dry
- File being used for length measurement contacts a metal restoration
- Residual gutta-percha remaining in retreatment cases
- Working length measurements obtained with an electronic apex locator should always be verified with a radiograph to ensure accuracy.





# CanalPro™ Apex Locator





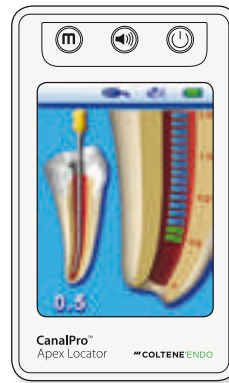
### CanalPro™ Apex Locator

- Brilliant, colored 3D panel
- Accuracy of measurement
- Comfortable
- Fully automatic
- Interactive operation
- Built-in demo mode
- Virtual Apex Function
- Audio feedback with volume control
- Built-in self-test for a fast function control
- Auto-off
- Rechargeable battery

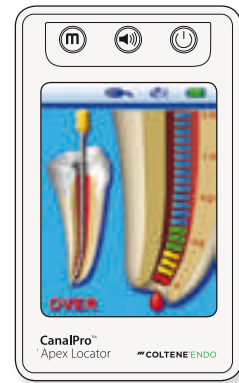
Apex Locator		
CanalPro Apex Locator EU Kit		6001 4334
1 × Apex Locator		
1 × Charger		
1 × Measuring cable		
2 × Lip clips		
2 × File clips		
1 × Touch probe		
Measuring cable	1 pc	6001 4335
File clips	2 pcs	6001 4336
Touch probe	2 pcs	6001 4337
Lip clips	5 pcs	6001 4338
Charger	1 pc	6001 4339
Rechargeable battery	1 pc	6001 4340



File tracking



Large apical zone



Over-instrumentation

# Endodontics

## Canal preparation



## Step 6 Canal preparation



The primary objectives of canal preparation are to remove infected tissue, provide irrigants access to the entire length of the canal, and create space for placement of medicaments and the definitive obturation material. As long as the clinician respects canal anatomy and geometry as he/she works to achieve the primary objectives as outlined above, a successful outcome can be achieved regardless of technique used.

A new generation of NiTi heat-treated files have increased superelasticity compared to traditional NiTi files and lack pseudo elasticity. Such benefits allow for superior canal tracking during instrumentation and practically eliminate the risk for procedural errors, such as file separation and canal transportation. Larger apical preparation sizes, which are needed to eliminate intracanal biofilm and adequately debride the apical region of the canal, can be achieved safely. In addition, with the lack of pseudo elasticity the files can be pre-bent, they are ideal for use in patients with limited opening or with teeth in which access to the root canal system is challenging.



HyFlex CM file



HyFlex CM pre-curved



HyFlex CM canal prep

### **An example of how to safely instrument the canal system once a tooth has been properly isolated with a Dental Dam:**

- Access and locate the canals
- Establish a glide path at the estimated working length with HyFlex GPF files
- Coronally flare the canals with an orifice opener (08/25) or Gates Glidden burs
- Confirm working length with an electronic apex locator
- To confirm glide path, hand filing up to #20 is recommended
- Instrument the canals using HyFlex CM rotary files using the following sequence, inserting all files to working length, 04/20, 04/25, 06/20, 04/30, 04/40.
- Check patency in between each file change
- If resistance occurs repeat prior step



# HyFlex<sup>TM</sup>CM CanalPro<sup>TM</sup>CL





### HyFlex™ CM – The regenerative NiTi File

#### Controlled memory + Extreme flexibility = Superior canal tracking

HyFlex Controlled Memory NiTi Files have been manufactured utilizing a unique process that controls the material's memory.



✓ Before use



✓ After use



✓ After heat treatment



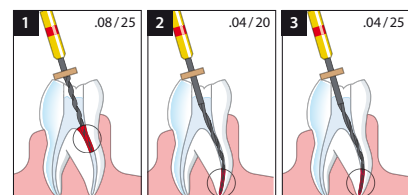
✗ Untwisted (discard)

#### Advantages:

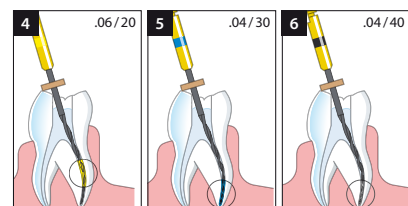
- The files are extremely flexible and have controlled memory.
- This gives the file the ability to follow the anatomy of the canal very closely, reducing the risk of ledging, transportation or perforation.
- The files can be pre-bent, to allow for easy insertion into canals with limited opening.

#### Regains shape after heat treatment = Multi-use

- HyFlex CM NiTi Files respond to excessive resistance with straightening of the spirals, which avoids binding to the walls and therefore increases fracture resistance.
- This form adaptation can be reversed quickly by heat treatment (during autoclaving or with a glass bead sterilizer) returning the instruments back to their original shape.
- Furthermore the heat treatment will strengthen the files making them a lot more resistant to cyclical fatigue.
- Also the heat treatment provides a clear visual opportunity to verify safe continuation of file use.



If working length is reached, it may be possible to go to Step 4



#### Up to 300 % more resistance to separation

HyFlex CM NiTi Files with Controlled Memory are up to 300 % more resistant to cyclical fatigue compared to conventional NiTi files, which substantially helps reducing the incidence of file separation.

#### Step by Step

HyFlex CM NiTi Files can be used with crown-down, step-back or our recommended single length technique (500 rpm, up to 2.5 N-cm)



## HyFlex™ CM NiTi Files & Accessories



### HyFlex GPF Sequence

Size	25mm
2 × 01/15; 2 × 02/15; 2 × 02/20	6001 8753

### HyFlex CM NiTi File Refills

Size	19mm	21mm	25mm	31mm
08/25	6001 1048			
04/15		6001 1049	6001 1065	6001 8284
04/20		6001 1050	6001 1066	6001 8285
04/25		6001 1052	6001 1067	6001 8286
04/30		6001 1053	6001 1068	6001 8287
04/35		6001 1054	6001 1069	
04/40		6001 1055	6001 1070	6001 8288
04/45		6001 1056	6001 1071	
04/50		6001 1057	6001 1072	6001 8289
04/60		6001 1058	6001 1073	6001 8290
06/20		6001 1059	6001 1074	6001 8291
06/25		6001 1060	6001 1075	
06/20, X-tra spirals		6001 8699	6001 8700	6001 8701
06/25, X-tra spirals		6001 8702	6001 8703	6001 8704
06/30		6001 1061	6001 1076	6001 8292
06/35		6001 1062	6001 1077	
06/40		6001 1063	6001 1078	6001 8293

### HyFlex CM NiTi-Files Sequence Single length

Sizes	21mm	25mm	31mm
08/25 19mm; 04/20; 04/25; 06/20; 04/30; 04/40	6001 1064	6001 1079	6001 8294

### HyFlex CM NiTi-Files Sequence Crown down

Sizes	21mm	25mm	31mm
S (08/25 19mm; 04/35; 04/30; 04/25; 04/20; 04/15)	6001 8689	6001 8692	6001 8695
M (08/25 19mm; 04/60; 04/50; 04/45; 04/40; 04/35)	6001 8690	6001 8693	6001 8696
L (08/25 19mm; 06/40; 06/35; 06/30; 06/25; 06/20)	6001 8691	6001 8694	6001 8697





## Step 6 Canal preparation



### HyFlex CM Introkit

Introkit Compact (Organizer, 25mm Sequenz, roeko GP Greater Taper)	6001 8786
---	-----------

### HyFlex CM Accessories

Endo Procedure Block	1 pc	6001 1083
Endo Organizer	1 pc	6001 8783
Endo Practice Block Pack	3 acrylic blocks	6001 1085

## CanalPro™ CL – Cordless Handpiece

- Thin ergonomic design for better access to hard to reach areas
- Large, user-friendly LCD panel
- Memory for up to 5 programs
- Auto-reverse mod
- 6 head positions allow contra angle head to be adjusted to your preferred position
- Operates continuously for approx. 80 minutes
- Quick charging time of approx. 90 minutes. Non-contact charger prevents improper charging due to deterioration of metallic terminal
- Energy-saving, turns off when not used for 10 minutes
- Contra angle head is autoclavable at 135 °C
- Rotation Speed (min<sup>-1</sup>): 140 ~ 550
- Torque Level (N·cm): 0.3 ~ 3.0



### CanalPro CL Cordless Handpiece & Accessories

CanalPro CL Complete Set EU / UK (without Apex Locator connection) Motor Handpiece, 1 pc; CanalPro CL Charger, 1 pc Contra Angle 16:1, 1 pc	6001 1035 / 6001 1036
Complete Set EU (with Apex Locator connection) Motor Handpiece 1 pc; CanalPro CL Charger, 1 pc Contra Angle 16:1 AL, 1 pc	6001 4050
Motor Handpiece	1 pc 6001 1037
Charger	1 pc 6001 1038
Contra Angle 16:1 (without Apex Locator connection)	1 pc 6001 1039
Contra Angle 16:1 AL (with Apex Locator connection)	1 pc 6001 3747



Irrigation  
**Endodontics**  
Drying  
Medicamentation



## Step 7 Irrigation



As studies have shown that approximately 40-50% of the root canal space remains untouched by conventional endodontic files, mechanical debridement alone cannot sufficiently clean and disinfect the root canal system. Chemical debridement in combination with mechanical debridement, also known as chemomechanical debridement, is necessary for successful root canal treatment.

Irrigants are used to help dissolve vital and necrotic tissue, eradicate bacteria and other microorganisms, remove the smear layer, and lubricate the canal system. As no single irrigant exists that can accomplish all of the above goals, multiple solutions must be used during clinical treatment. Sodium hypochlorite (NaOCl), ethylenediaminetetraacetic acid (EDTA), and 2% Chlorhexidine (CHX) are commonly used for chemical debridement during the process of canal preparation.



Side-port irrigation tip taken to proper length

Mixing NaOCl with CHX results in formation of an orange carcinogenic precipitate known as parachloroaniline. Clinicians, therefore, should use extreme caution not to use the two irrigants in succession. EDTA can be used to neutralize NaOCl so that CHX can be used safely. An example of a common irrigation protocol is as follows:

- NaOCl used throughout the process of canal instrumentation
- EDTA used to remove the smear layer once canal instrumentation is complete
- 2% CHX used as the final irrigant before obturation



# CanalPro™ Irrigation and rinsing





### CanalPro™ EXTRA NaOCl 6 %

- For irrigation/debridement of root canals
- Same formula as Chlor-XTRA™\*
- 2 x more efficient
- Powerful wetting agents and proprietary surface modifiers enable penetration into hard-to-reach areas such as lateral canals and isthmuses
- 2 x increased digestive action or ability to regular sodium hypochlorite solutions cuts tissue dissolution time in half



EXTRA NaOCl 6 %		
	480 ml	6001 1159

\*Chlor-XTRA is not a trademark of Coltène/Whaledent

### CanalPro™ NaOCl

- For irrigation/debridement of root canals
- Available in 3 % and 6 % formula



NaOCl		
	3 % 480 ml	6001 1160
	6 % 480 ml	6001 1161

### CanalPro™ EDTA 17 %

- 17 % EDTA solution (pH 8.5)
- Removes smear layer and dentin mud
- Opens dentin tubules to increase penetration of disinfecting solutions
- Allow for better adhesion of sealer and obturation materials



EDTA 17 %		
	480 ml	6001 1157
	120 ml	6001 1158

### CanalPro™ CHX 2 %

- 2 % chlorhexidine digluconate solution
- Substantive
- Very effective against E. faecalis and fungi



CHX 2 %		
	480 ml	6001 3994
	120 ml	6001 4327



### CanalPro™ Syringe Station

- No Mess! No Waste! Less Time!



- Practical and efficient method to fill syringes
- Syringe activated valve
- Low level light indicator
- Helps prevent counter, carpet and scrub damage
- Several units may be connected to create a convenient station for filling multiple solutions

#### Syringe Station

1 Station

6001 1159

### CanalPro™ Color Syringes

- Latex-Free



- Offer a fast, easy way to organize and identify syringes
- Color coded
- Available in 10 ml and 5 ml

#### Color Syringes 50 syringes/box

	10 ml	5 ml
Red	6001 1173	6001 9321
Blue	6001 1174	6001 9322
Yellow	6001 1175	6001 9323
White	6001 1176	6001 9324

### CanalPro™ Syringe Warmer

- For 10 ml syringes



- Heats to 55 °C
- Ideal to heat anastatics and composites
- Gives higher efficiency to rinsing solution at lower concentration

#### Syringe Warmer

1 pc

6001 1183

### CanalPro™ Blue Tips

- Soft plastic tip for irrigation
- Autoclavable



- 23ga / 0,6mm
- From curve 12mm length

#### Blue Tips

20/cup

6001 1166



### CanalPro™ Flex Tips

- Bendable for optimal access
- Excellent canal tracking
- Non-kink polyamide tip
- Disposable (single use) tip
- From curve 25 mm length



#### Flex Tips 20 / cup

25 ga; 0,5 mm	6001 1163
30 ga; 0,3 mm	6001 1164

### CanalPro™ Slotted-End Tips

- Ideal for irrigation of sinus tract
- Slotted and side-vented
- 25 mm length



#### Slotted-End Tips 100 / bag

27 ga; 0,4 mm	6001 1167
30 ga; 0,3 mm	6001 1168

### CanalPro™ Side-Port Tips

- Closed end for side port delivery
- 25 mm length



#### Side-Port Tips 100 / bag

27 ga; 0,4 mm	6001 1169
30 ga; 0,3 mm	6001 1170



### ROEKO CanalBrush™

- Highly flexible
- Made of polypropylene
- To remove dentin, plaque and other impurities loosened by files and drills
- Increases considerably the cleaning effect of irrigating solutions on the root canal surface. Better cleaning effect than with files, without enlarging the canal
- Autoclavable at 134 °C
- Can be used to place post cements or adhesives
- Very flexible, lower risk of breakage
- Endo stops permit length control



#### CanalBrush™

Assorted S, M, L	30 pcs + stops	378 000
Size S	10 pcs + stops	378 020
Size S	20 pcs + stops	378 120
Size S	50 pcs + stops	378 220
Size M	10 pcs + stops	378 025
Size M	20 pcs + stops	378 125
Size M	50 pcs + stops	378 225
Size L	10 pcs + stops	378 030
Size L	20 pcs + stops	378 130
Size L	50 pcs + stops	378 230

### ENDO Cleaning Pack

- 20% savings compared to single purchase
- This practical package offers the dentist all basic steps for the rinsing and drying process of an endodontic treatment



#### Cleaning Pack

ENDO Cleaning Pack	6001 9125
1 x ROEKO Surgitip-endo (20pcs/pack)	
1 x CanalPro NaOCL 3% (480ml)	
1 x ROEKO Canal Brush assort. S,M,L	
1 x ROEKO Paperpoints Top Color assort. 15-40	
1 x ROEKO Cotton pellets, size 1 (10gr)	
5 x CanalPro Slotted-End Tips, 27 ga	
5 x CanalPro Color coded syringes (red)	



## Step 8 Drying



Following instrumentation and irrigation, the root canal system must be dried prior to placement of either the obturation material or an inter-appointment medication. The presence of residual irrigation solutions or fluid from the periapical tissues in the root canal system may prevent establishment of an adequate seal.



Surgitip-endo dries fast



Surgitip-endo visibility



Paper Points

Paper Points inserted into the canals to working length are traditionally used to dry the canals and are available in various sizes. Larger, thicker points can be used initially to absorb a majority of the fluid from the coronal and middle thirds of the canals. Points with smaller tips and less taper can then be used to finish the drying process. Complete drying of the canals can be verified when Paper Points are inserted into the canals to working length and no moisture appears on the tips of the Points.





## ROEKO Paper Points

- Sterile
- Highly absorbent
- No adhesives
- Firm yet flexible for easy application
- Length: ISO and conventional  $\geq 25$  mm
- Assorted or individual sizes

## ROEKO Paper Points Top color

- White tip, end colored
- Prevents mixing up of sizes
- Monitors the cleaning and drying of the root canal



(ISO)-Drawer box	
Size	200 pcs
Assorted 15–40	344 596
15	344 515
20	344 520
25	344 525
30	344 530
35	344 535
40	344 540
Size	120 pcs
Assorted 45–80	344 597
45	344 545
50	344 550
55	344 555
60	344 560
70	344 570
80	344 580
Assorted 90–140	344 598
90	344 590
100	344 591
110	344 592
120	344 593
130	344 594
140	344 595

(ISO)-Drawer box	
Size	500 pcs
Assorted 15–40	344 696
15	344 615
20	344 620
25	344 625
30	344 630
35	344 635
40	344 640
Size	300 pcs
Assorted 45–80	344 697
45	344 645
50	344 650
55	344 655
60	344 660
70	344 670
80	344 680



### ROEKO Paper Points Top color



(ISO)-Cellpack	
Size	180 pcs
Assorted 15–40	344 896
15	344 815
20	344 820
25	344 825
30	344 830
35	344 835
40	344 840

(ISO)-Cellpack	
Size	180 pcs
Assorted 45–80	344 897
45	344 845
50	344 850
55	344 855
60	344 860
70	844 870
80	344 880

### ROEKO Paper Points color

- Prevents mixing up of sizes
- Color becomes deeper, when in contact with moisture
- Will turn white, when in contact with sodium hypochlorite or hydrogen peroxide



(ISO)-Drawer box	
Size	200 pcs
Assorted 15–40	340 201
15	340 215
20	340 220
25	340 225
30	340 230
35	340 235
40	340 240
Size	120 pcs
Assorted 45–80	340 202
45	340 245
50	340 250
55	340 255
60	340 260
70	340 270
80	340 280
Assorted 90–140	340 204
90	340 290
100	340 210
110	340 211
120	340 212
130	340 213
140	340 214

(ISO)-Drawer box	
Size	500 pcs
Assorted 15–40	341 596
15	341 515
20	341 520
25	341 525
30	341 530
35	341 535
40	341 540
Size	300 pcs
Assorted 45–80	341 597
45	341 545
50	341 550
55	341 555
60	341 560
70	341 570
80	341 580



## ROEKO Paper Points white

- White points



- Monitors the cleaning and drying of the root canal

- Assorted or individual sizes

(ISO)-Drawer box	
Size	200 pcs
Assorted 15–40	340 154
15	340 015
20	340 020
25	340 025
30	340 030
35	340 035
40	340 040
Size	120 pcs
Assorted 45–80	340 458
45	340 045
50	340 050
55	340 055
60	340 060
70	340 070
80	340 080
Assorted 90–140	340 914
90	340 090
100	340 100
110	340 110
120	340 120
130	340 130
140	340 140

(ISO)-Drawer box	
Size	500 pcs
Assorted 15–40	341 154
15	341 015
20	341 020
25	341 025
30	341 030
35	341 035
40	341 040
Size	300 pcs
Assorted 45–80	341 458
45	341 045
50	341 050
55	341 055
60	341 060
70	341 070
80	341 080

## ROEKO Paper Points conventional

- White points



- More tapered than ISO points, ideal for more conically-shaped root canals

- Assorted or individual sizes

Drawer box		
Size	200 pcs	500 pcs
Assorted XXF-XL	342 000	343 000
XXF	342 001	343 001
XF	342 002	343 002
F	342 003	343 003
M	342 004	343 004
L	342 005	343 005
XL	342 006	343 006

Cellpack	
Size	180 pcs
Assorted XXF-XL	346 000
XXF	346 001
XF	346 002
F	346 003
M	346 004
L	346 005
XL	346 006



### ROEKO Paper Points Greater Taper

- Length  $\geq 28\text{mm}$
- Top Color coded
- The diameter of the tip corresponds to the ISO sizes
- Assorted or individual sizes
- Ideal for drying root canals which have been prepared with HyFlex CM files, GT Files, HERO, ProFile, Quantec etc.
- Available with a taper of 4% or 6%

	Drawer box 100 pcs	
	0.04	0.06
15	6001 9011	-
20	6001 9012	6001 9030
25	6001 9013	6001 9031
30	6001 9014	6001 9032
35	6001 9015	6001 9033
40	6001 9016	6001 9034
45	6001 9017	6001 9035
50	6001 9018	-
60	6001 9019	-
20-45	6001 9020	6001 9036

	Cellpack 112 pcs	
	0.04	0.06
15	6001 9037	-
20	6001 9038	6001 9047
25	6001 9039	6001 9048
30	6001 9040	6001 9049
35	6001 9041	6001 9050
40	6001 9042	6001 9051
45	6001 9043	6001 9052
50	6001 9044	-
60	6001 9045	-
20-45	6001 9046	6001 9053

### ROEKO Surgitip-micro

- Microsurgical aspirator tip
- Sterile, ready for use in peel packs
- Specially designed for use with microscope or loupe
- Green conical tip provides excellent contrast and unblocked field of vision



Surgitip-micro 1,2mm tip opening	
20 pcs + 1 Double Adapter	462 012
100 pcs. + 5 Double Adapter	462 013



### ROEKO Surgitip-endo

- Endodontic aspirator tip for the root canal
- Specially designed tip for multi-directional flexibility
- Effective aspiration and good canal accessibility
- Canal Tip ISO 60, inner diameter 0.35 mm
- Manufactured in clean room to EN ISO 14644



#### Surgitip-endo

20 pcs + 1 Double Adapter

6001 8280

### ROEKO Adapter and Double Adapter

- Reliable aspiration independent of the used aspirating equipment
- For connecting Surgitip cannulas to 11 and 16 mm aspirating equipment
- Autoclavable and chemoclavable up to 134 °C



#### Adapter and Double Adapter

Double Adapter $\varnothing 6.5 > \varnothing 11 > \varnothing 16$ mm	1 pc	463 000
Adapter $\varnothing 11 > \varnothing 16$ mm	1 pc	463 011
Adapter $\varnothing 6.5 > \varnothing 11$ mm	1 pc	463 025

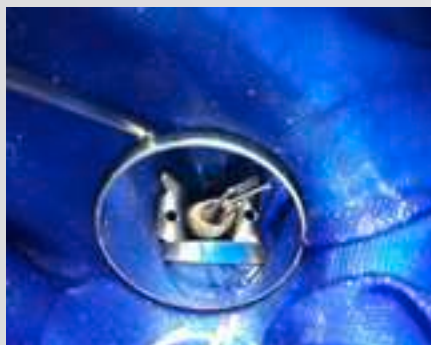


Microorganisms associated with endodontic infections may persist within the root canal system following chemomechanical debridement due to the microorganisms being resistant to endodontic irrigants and/or inaccessible to endodontic files. Placement of a medicament that can diffuse into irregularities of the root canal system and further disinfect the root canal space may increase the success of root canal treatment.

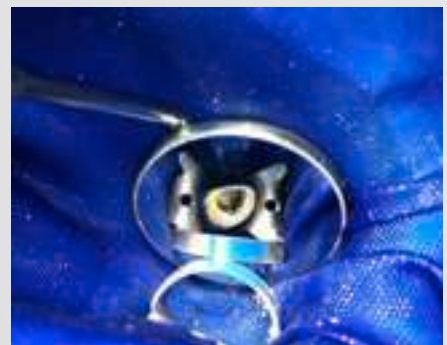
The most commonly used interappointment medicament is calcium hydroxide. One benefit of calcium hydroxide is that it can neutralize endotoxin. It is recommended that calcium hydroxide be left in a tooth for one week to one month to ensure disinfection and resolution of symptoms. In cases with a persistent periapical lesion or when symptoms do not resolve after placement of a standard calcium hydroxide product, use of calcium hydroxide mixed with chlorhexidine or iodine may be indicated.



Insertion of Points



Length is Adjusted



Working Field View of Points Placed

In order for an interappointment medicament to be effective, it must extend the full length of the canal. Following placement of calcium hydroxide, therefore, the clinician should take a radiograph to verify that the medicament has been delivered to working length. The placement of points is a reliable way to insure coverage of the complete root canal.



### ROEKO Calcium Hydroxide PLUS Points

- Excellent alternative to calcium hydroxide pastes
- Easy to use, practical and effective
- Ensure that  $\text{Ca(OH)}_2$  is applied to working length
- Clean (no smearing around the access cavity during insertion)
- Time-saving – the points are ready to use
- No mixing, easy to apply and to remove
- Greater release of  $\text{Ca(OH)}_2$ , more effective over longer period
- Safe
- Assorted or individual sizes



(ISO)-Drawer box length $\geq 28$ mm	
Size	60 pcs
Assorted 15–40	366 896
15	366 815
20	366 820
25	366 825
30	366 830
35	366 835
40	366 840

(ISO)-Drawer box length $\geq 28$ mm	
Size	60 pcs
Assorted 45–80	366 897
45	366 845
50	366 850
55	366 855
60	366 860
70	366 870
80	366 880





### ROEKO activ point Chlorhexidine Points

- For temporary root canal filling and prevention of reinfection
- Gutta-percha matrix with 5% chlorhexidine diacetate
- Easy to apply and easy to remove
- Radiopaque
- Highly effective against bacteria and many other organisms, yeasts and fungi, even in low concentrations.
- Provides a means for applying chlorhexidine directly into the root canal
- Assorted or individual sizes



(ISO)-Drawer box length $\geq$ 28 mm	
Size	60 pcs
Assorted 15–40	367 296
15	367 215
20	367 220
25	367 225
30	367 230
35	367 235
40	367 240

(ISO)-Drawer box length $\geq$ 28 mm	
Size	60 pcs
Assorted 45–80	367 297
45	367 245
50	367 250
55	367 255
60	367 260
70	367 270
80	367 280



Temporary  
restoration

Endodontie

Obturation



## Step 10 Temporary restoration

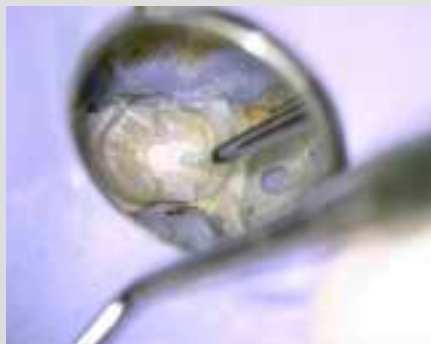


A temporary restoration is placed to seal the root canal system coronally following completion of root canal therapy when the definitive restoration cannot be placed immediately or between treatment appointments when multiple visits will be required. In order to adequately seal the root canal system and prevent contamination from oral fluids, the temporary restoration should be placed to a thickness of at least 4–5 mm.

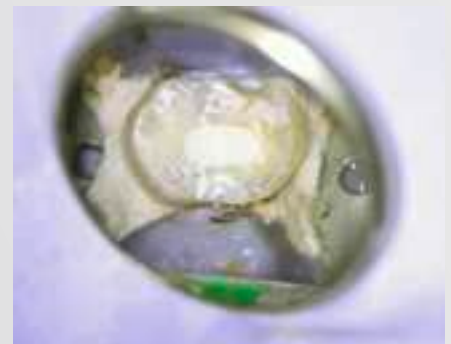
Because a temporary restoration will be subjected to masticatory forces, the ideal material should maintain its structural integrity when exposed to normal chewing forces. In addition, the material should have a smooth texture so as not to irritate the tongue or cheek.



Placing DuoTEMP



Condensing DuoTEMP



Final temporary restoration

In cases when a resin material will be placed as the definitive restoration, the clinician should use caution when choosing a temporary restorative material. Materials that contain eugenol can affect the bond of resin and therefore should not be used when a composite will be used to definitively restore the tooth.



### Coltosol® F

- Temporary filling material
- No light curing needed
- Sets with saliva for perfect marginal seal
- Eugenol-free, so it won't affect final cementation
- Radiopaque
- Creamy consistency for easy adaptation in the cavity
- No mixing and waste of material
- Easy removal in large portions
- Ideal surface hardness for posterior provisional fillings



Coltosol F		
Single Pack		5906
In jar	38 g	
Eco Pack		5911
In jar	3 × 38 g	
Syringes	5 × 8 g	5930

### DuoTEMP®

- Dual-cured temporary filling material, eugenol-free and radiopaque for temporary fillings.



DuoTEMP		
Syringe	5 g	5831
Syringes	5 × 5 g	7090



Obturation of the root canal system can be completed once debridement and disinfection have been performed. The goal of obturation is to fill the canal space in three dimensions and provide a coronal, lateral, and apical seal. Cold-filling systems provide better adaptation to the complexity of the root canal.

Gutta-percha is the most widely-used obturation material. It has the benefits of being biocompatible, radiopaque and easy to manipulate. Various obturation techniques with gutta-percha are currently practiced including, warm vertical compaction and lateral compaction. Since many root canal systems are quite complex, use of a cold filling system minimize the risk of voids due to shrinkage.



Finished Prepared Canals



Canals with Master Gutta-Percha Points

If the definitive restoration is not placed as soon as possible following obturation of the root canal system, there is a risk for coronal leakage despite sealing the endodontic access with a temporary restorative material. A 1mm – to 2mm – thick layer of flowable composite or glass ionomer placed over the canal orifices and into the pulp chamber can establish a coronal seal to minimize the risk for leakage.



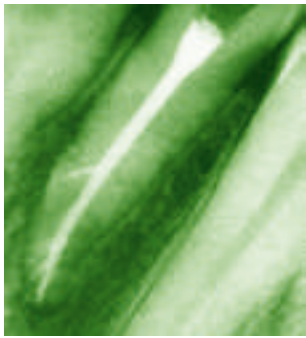
# roeko GuttaFlow<sup>®</sup> 2





### RoekoSeal – Making Progress in Endodontics

RoekoSeal is an exceptional root canal sealer. Its chemical and physical properties fulfill all the requirements of a root canal sealer. RoekoSeal combines exceptional material properties such as excellent flowability, no shrinkage and biocompatibility with practical handling. There is no risk of incorrect mixing. RoekoSeal provides an excellent seal and sets new standards in quality and biocompatibility in endodontics. RoekoSeal flows so well that the root canal and lateral canals are filled effectively. Cell tests, tests for mutagenic effects and sensibilization tests all showed negative results. .



obturation      3 months      12 months

**RoekoSeal Automix/Single Dose**  
Working time: up to 30 min  
Curing time: 45 – 50 min

**Clinical Tests**  
The results of the clinical study demonstrate clearly that the periapical periodontitis has healed well and show the clinical success of RoekoSeal. The study was published in Journal of Endodontics, 2003 Apr; 36(4): 296-301

### RoekoSeal Automix

- Ready-to-use
- Dispenses just the quantity required
- Homogeneously and hygienically mixed and free of air bubbles
- Easy to use



Automix	
Set	349 100
Dual-barrel syringe 1 pc; Mixing tips 12 pcs; Mixing pad, 1 pc	
Refill pack	
Mixing tips, 24 pcs	349 105
Refill pack	
Dual-barrel syringe, 1 pc	349 102

### RoekoSeal Single Dose

- Individual portions
- Hygienic
- Easy to use
- Perfect for pre-appointment set-up
- Sufficient material to treat one multi-rooted tooth



Single Dose	
Blister packs 40 pcs; Mixing pad, 1 pc; Spatula, 1 pc	349 103



## GuttaFlow® 2 – Expansion meets Adhesion. The new GuttaFlow® - generation

GuttaFlow 2 is a novel filling system for root canals that combines two products in one: gutta-percha in powder form with a particle size of less than 30 µm, and sealer. This new filling system works with cold free-flow gutta-percha.

GuttaFlow 2 is an advancement of the existing GuttaFlow material in capsules and has the same excellent material properties:

- Two in One – combines sealer and gutta-percha
- Excellent flow properties
- Solubility is virtually zero
- Tight seal of the root canal
- Biocompatible
- Optimum protection against re-infection
- Excellent radiopacity
- Allows for precise post preparation

GuttaFlow 2 shows a slight expansion and adheres very well to the master Guttapercha Point as well as to dentin. No condensation is necessary. If greater adhesion is required, the new GuttaFlow 2 Primer can be used.

New application form: GuttaFlow 2 is available in a 5 ml automix syringe:

- Syringe guarantees easy handling, dispenses just the quantity required and mixes the material homogeneously, hygienically and free of air bubbles
- Working time: 10 – 15 min
- Curing time: 25 – 30 min
- The use of any additional sealer is not required

---

### GuttaFlow® 2

- Working time: 10 – 15 min
  - Curing time: 25 – 30 min
- 

### GuttaFlow® 2 FAST

GuttaFlow 2 FAST reduces chair time

- Working time: 4 – 5 min
- Curing time: 8 – 10 min





## ROEKO GuttaFlow® 2



### Syringe - GuttaFlow 2

ROEKO GuttaFlow® 2 Standard Set		6001 3701
Dual-barrel syringe (5 ml)	1 pc	
Mixing tips	12 pcs	
Mixing pad	1 pc	
GuttaFlow 2 Refill pack dual-barrel syringe		6001 3745
Dual-barrel syringe (5 ml)	1 pc	
GuttaFlow 2 Refill pack mixing tips		6001 3719
Mixing tips	24 pcs	

### Capsules - GuttaFlow 2 Introkit

GuttaFlow 2 Introkit		6001 3702
Capsules GuttaFlow 2	20 pcs	
Canal Tips + Stops	20 pcs	
Adapters for RotoMix™*	3 pcs	
Dispenser	1 pc	
Guttapercha points Top Color ISO 15-40	100 pcs	
Guttapercha points Greater Taper 0.04 20-45	60 pcs	



### Refill packs capsules and accessories

Capsules GuttaFlow 2	20 pcs	6001 3704
Canal Tips + Stops	20 pcs	
Capsules GuttaFlow 2 FAST	20 pcs	6001 3706
Canal Tips + Stops	20 pcs	
GuttaFlow 2 Dispenser	1 pc	6001 3707
Canal Tips + Stops	20 pcs	349 132
Combi Tips + Stops	20 pcs	349 134
Adapters for RotoMix™*	3 pcs	349 133

\* RotoMix™ ist not a trademark of Coltène/Whaledent





## ROEKO Guttapercha Points Top color

- Pink tip, end colored
- Prevents mixing up of sizes
- Assorted or individual sizes



(ISO)-Drawer box length: $\geq 28$ mm	
Size	100 pcs
Assorted 15–40	365 196
15	365 115
20	365 120
25	365 125
30	365 130
35	365 135
40	365 140
Assorted 45–80	365 197
45	365 145
50	365 150
55	365 155
60	365 160
70	365 170
80	365 180
Assorted 90–140	365 198
90	365 190
100	365 191
110	365 192
120	365 193
130	365 194
140	365 195

(ISO)-6 Tubes length: $\geq 28$ mm	
Size	100 pcs
Assorted 15–40	365 396
15	365 315
20	365 320
25	365 325
30	365 330
35	365 335
40	365 340
Assorted 45–80	365 397
45	365 345
50	365 350
55	365 355
60	365 360
70	365 370
80	365 380



### ROEKO Guttapercha Points color

- Color coded
- Prevents mixing up of sizes
- Assorted or individual sizes



(ISO)-Drawer box length: $\geq 28$ mm	
Size	100 pcs
Assorted 15–40	362 154
15	362 015
20	362 020
25	362 025
30	362 030
35	362 035
40	362 040

(ISO)-Drawer box length: $\geq 28$ mm	
Size	100 pcs
Assorted 15–40	362 458
45	362 045
50	362 050
55	362 055
60	362 060
70	362 070
80	362 080

### ROEKO Guttapercha Points



(ISO)-Drawer box length: $\geq 28$ mm	
Size	100 pcs
Assorted 15–40	360 154
15	360 015
20	360 020
25	360 025
30	360 030
35	360 035
40	360 040
Assorted 45–80	360 458
45	360 045
50	360 050
55	360 055
60	360 060
70	360 070
80	360 080
Assorted 90–140	360 914
90	360 090
100	360 100
110	360 110
120	360 120
130	360 130
140	360 140

(ISO)-6 Tubes length: $\geq 28$ mm	
Size	100 pcs
Assorted 15–40	361 154
15	361 015
20	361 020
25	361 025
30	361 030
35	361 035
40	361 040
Assorted 45–80	361 458
45	361 045
50	361 050
55	361 055
60	361 060
70	361 070
80	361 080



### ROEKO Guttapercha Points conventional

- Suitable for use as accessory points for condensation techniques
- More tapered



Drawer box length: ≥ 28 mm	
Size	100 pcs
Assorted XF-L (without FF)	364 018
F+M	364 019
XXF	364 009
XF	364 010
FF	364 011

Drawer box length: ≥ 28 mm	
Size	100 pcs
MF	364 012
F	364 013
FM	364 014
M	364 015
L	364 017

### ROEKO Guttapercha Points Greater Taper

- Ideal for obturating root canals which have been prepared with HyFlex CM files, GT Files, HERO, ProFile, Quantec etc.
- The diameter at the tip corresponds to the ISO sizes
- Available with a taper of 4% or 6%
- Assorted or individual sizes



Drawer box 60 pcs, length: ≥ 28 mm		
Size	0.04	0.06
Assorted 20–45	361 746	361 846
20	361 720	361 820
25	361 725	361 825
30	361 730	361 830
35	361 735	361 835
40	361 740	361 840
45	361 745	361 845



### ROEKO Spreader NiTi

- For lateral condensation
- Made from nickel titanium
- Memory effect, so that they return to their original shape
- Flexible
- Very light instruments for less fatigue
- Rings on handle indicate size to allow for easy identification



Spreader NiTi		
Size	pcs	
Assorted 15–35	3 pcs	386 009
15	1 pc	386 015
25	1 pc	386 025
35	1 pc	386 035

### ROEKO Spreader

- For lateral condensation
- Stainless steel
- Rings on handle indicate size to allow for easy identification



Spreader		
Size	pcs	
Assorted 20–50	4 pcs	386 000
20	1 pc	386 002
30	1 pc	386 003
40	1 pc	386 004
50	1 pc	386 005

### ROEKO Plugger

- For vertical condensation
- Stainless steel
- mm length gradation on tips
- Rings on handle indicate size to allow for easy identification



Plugger		
Size	pcs	
Assorted 0.6–1.2 mm	4 pcs	386 100
0.6 mm	1 pc	386 106
0.8 mm	1 pc	386 108
1.0 mm	1 pc	386 110
1.2 mm	1 pc	386 112

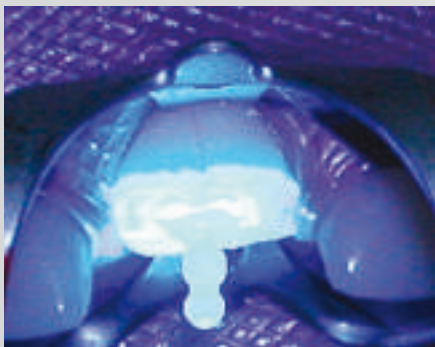
# Endodontics

## Definite restoration



Placement of a definitive restoration that seals the tooth coronally is critical for the long-term success of root canal treatment. Lack of a fluid-tight seal will result in bacterial contamination of the obturated root canal system and ultimate failure of the case. In addition to sealing the tooth coronally, the definitive restoration should reinforce the remaining tooth structure to prevent fracture and replace lost tooth structure to return the tooth to full function.

As a general rule, endodontically-treated posterior teeth should be restored with a core restoration and crown. When a significant amount of coronal tooth structure has been lost, a post that extends approximately two-thirds the length of the root may be indicated to provide retention for the core restoration. Posts serve the sole function of providing retention for the core material.



ParaPost FiberLux is seated in post space and cement is light-cured (if using a light-curing cement).



Core build-up using ParaCore and ParaForm Core former.



Final post and core build-up.

The choice of post material is often based on functional and esthetic demands of the tooth being restored in addition to the amount of remaining tooth structure and clinician preference.

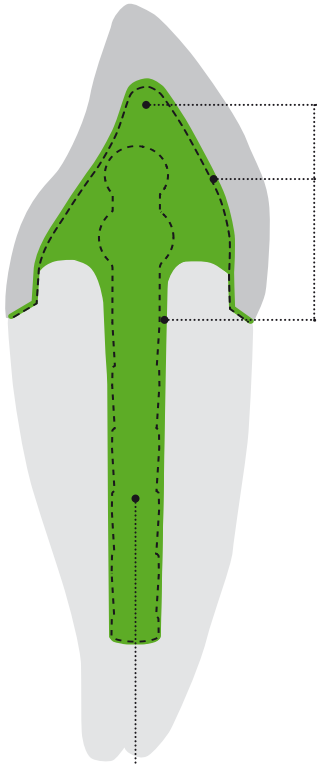


# ParaPost®





## One complete system for the direct and indirect technique using active and passive root canal posts



### ParaCore® 5 ml

One material for 3 indications.

Dual cure composite cement for cementation and core build ups.

ParaCore 5 ml is approved for the following 3 key indications:

- crown & bridge cementation
- core build ups
- post cementation

Use of one material for cementation and core build ups provides an optimal "monoblock bond interface" between the post-cement-dentin-crown, resulting in a cohesive restoration with outstanding durability and strength.

### ParaPost® XT™ Threaded, Titanium Alloy Post

Threaded, parallel-sided post with rounded, undercut head for direct post/core build-ups in one appointment. Ideal for glass-ionomer/composite core build-ups which require more retention and more safety.

### ParaPost® XH™ Passive, Titanium Alloy Post

Passive cemented, parallel-sided post with rounded, undercut head for direct post/core build-ups in one appointment. Ideal for glass-ionomer/composite core build-ups which require the safety of a passive post.

### ParaPost® Fiber White/Fiber Lux/Taper Lux

ParaPost® Fiber White, Fiber Lux and Taper Lux are great alternatives to metal posts for esthetic, metal-free restorations.

### ParaPost® XP™ Passive, Titanium Alloy or Stainless Steel Post

Passive cemented, parallel-sided post with flat head for direct post/core build-ups in one appointment. Ideal for multi-rooted post/core build-ups.

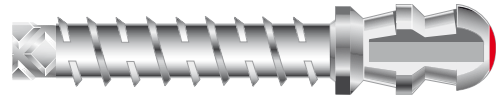
### ParaPost® XP™ Casting Components

Passive cemented, parallel-sided, prefabricated casting components for the direct/indirect casting technique. Ideal for clinical situations requiring the additional strength of a precision, one-piece cast post/core and choice of alloy.

### ParaPost® XP™ Gold Posts

Passive cemented, parallel-sided gold posts for the direct/indirect casting technique. Ideal for cast post/cores that require the most precise fit and optimum resistance to oblique forces.

Active



Passive



Passive



Passive



Passive



Passive





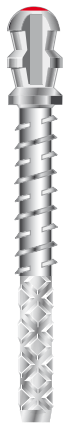


### ParaPost® X™ System

- A complete family of posts for any clinical situation
- State-of-the-art universal endodontic post system for all direct and casting techniques.
- Standardized system with seven sizes including two intermediate sizes
- Non-end cutting, depth-calibrated drills for precise canal preparation
- Diamond pattern design, multiple venting channels

### ParaPost® XT™

- Titanium alloy post
- Threaded, parallel-sided post with rounded, undercut head for direct post/core restoration in one appointment
- Ideal for glass-ionomer/composite core restorations which require more retention and more safety
- Active



Introductory Kit			
One-Office-Visit Technique; Titanium Alloy Posts			P 680T
Size			pcs
3	ø 0.90 mm	Brown	3 pcs
4	ø 1.00 mm	Yellow	5 pcs
4.5	ø 1.14 mm	Blue	5 pcs
5	ø 1.25 mm	Red	5 pcs
5.5	ø 1.40 mm	Purple	4 pcs
6	ø 1.50 mm	Black	3 pcs
ParaPost XT Drills			6 pcs
Universal Hand Driver			1 pc
Metal Wrench A for size 3, 4, 4.5			1 pc
Metal Wrench B for size 5, 5.5, 6			1 pc

Metal Wrenches		
Wrench A for sizes 3, 4, 4.5	1 pc	L 594
Wrench B for sizes 5, 5.5, 6	1 pc	L 595
Wrench A+B	2 pcs	L 596

Universal Hand Driver	
	1 pc L 590

Titanium Alloy Posts Refill				
Size			10 pcs	25 pcs
3	ø 0.90 mm	Brown	P 683 0	P 683 0B
4	ø 1.00 mm	Yellow	P 684 0	P 684 0B
4.5	ø 1.14 mm	Blue	P 684 5	P 684 5B
5	ø 1.25 mm	Red	P 685 0	P 685 0B
5.5	ø 1.40 mm	Purple	P 685 5	P 685 5B
6	ø 1.50 mm	Black	P 686 0	P 686 0B



Drills Refill three-fluted			
Size			3 pcs
3	ø 0.90 mm	Brown	P 623 0
4	ø 1.00 mm	Yellow	P 624 0
4.5	ø 1.14 mm	Blue	P 624 5
5	ø 1.25 mm	Red	P 625 0
5.5	ø 1.40 mm	Purple	P 625 5
6	ø 1.50 mm	Black	P 626 0
Assorted 3–6 (one of each size)			P 682 A

### ParaPost® XH™

- Titanium alloy post

- Passive cemented, parallel-sided post with rounded, undercut head for direct post/core build-ups in one appointment
- Ideal for glass ionomer/composite core build-ups which require the safety of a passive post



Introductory Kit			
One-Office-Visit Technique; Titanium Alloy Posts			P 880
Size			pcs
3	ø 0.90 mm	Brown	4 pcs
4	ø 1.00 mm	Yellow	5 pcs
4.5	ø 1.14 mm	Blue	5 pcs
5	ø 1.25 mm	Red	5 pcs
5.5	ø 1.40 mm	Purple	2 pcs
6	ø 1.50 mm	Black	2 pcs
7	ø 1.75 mm	Green	2 pcs
ParaPost X Drills (one of each size)			7 pcs
Universal Hand Driver			1 pc



Titanium Alloy Posts Refill			
Size			12 pcs
3	ø 0.90 mm	Brown	EP 88 3
4	ø 1.00 mm	Yellow	EP 88 4
4.5	ø 1.14 mm	Blue	EP 88 4.5
5	ø 1.25 mm	Red	EP 88 5
5.5	ø 1.40 mm	Purple	EP 88 5.5
6	ø 1.50 mm	Black	EP 88 6
7	ø 1.75 mm	Green	EP 88 7



### ParaPost® XP™

- Titanium Alloy or Stainless Steel Posts
- Passive cemented, parallel-sided post with flat head for direct post/core build-ups in one appointment
- Ideal for multi-rooted core restorations

### Casting Components:

- Passive cemented, parallel-sided, pre-fabricated casting components for the direct/indirect casting technique
- Ideal for clinical situations requiring the additional strength of a precision one-piece casting post and choice of alloy.

### Gold Posts:

- Passive cemented, parallel-sided gold posts for the direct/indirect casting technique.
- Casting posts ensure the most precise fit and optimum resistance to oblique forces.



System Introductory Kit			
One-Office-Visit Technique; Stainless Steel Posts			P 780
One-Appointment Technique; Titanium Alloy Posts			P 780T
Size			pcs
3	ø 0.90 mm	Brown	4 pcs
4	ø 1.00 mm	Yellow	5 pcs
4.5	ø 1.14 mm	Blue	5 pcs
5	ø 1.25 mm	Red	5 pcs
5.5	ø 1.40 mm	Purple	2 pcs
6	ø 1.50 mm	Black	2 pcs
7	ø 1.75 mm	Green	2 pcs
ParaPost X Drills (one of each size)			7 pcs
Universal Hand Driver			1 pc

Stainless Steel Posts Refill				
Size			12 pcs	25 pcs
3	ø 0.90 mm	Brown	EP 744 3	EP 744 3B
4	ø 1.00 mm	Yellow	EP 744 4	EP 744 4B
4.5	ø 1.14 mm	Blue	EP 744 4.5	–
5	ø 1.25 mm	Red	EP 744 5	EP 744 5B
5.5	ø 1.40 mm	Purple	EP 744 5.5	EP 744 5.5B
6	ø 1.50 mm	Black	EP 744 6	–
7	ø 1.75 mm	Green	EP 744 7	EP 744 7B

Titanium Alloy Posts Refill			
Size			12 pcs
3	ø 0.90 mm	Brown	EP 784 3
4	ø 1.00 mm	Yellow	EP 784 4
4.5	ø 1.14 mm	Blue	EP 784 4.5
5	ø 1.25 mm	Red	EP 784 5
5.5	ø 1.40 mm	Purple	EP 784 5.5
6	ø 1.50 mm	Black	EP 784 6



## ParaPost® XP™ System Introductory Kit



### System Introductory Kit

Casting Technique		P 781
Impression Posts (Size 3–7)	25 pcs	
Temporary Posts (Size 3–7)	25 pcs	
Burnout Posts (Size 3–7)	25 pcs	
ParaPost X Drills (one of each size)	7 pc	

### Plastic Impression Posts Refill

Size			20 pcs
3	ø 0.90 mm	Brown	P 743 3
4	ø 1.00 mm	Yellow	P 743 4
4.5	ø 1.14 mm	Blue	P 743 4.5
5	ø 1.25 mm	Red	P 743 5
5.5	ø 1.40 mm	Purple	P 743 5.5
6	ø 1.50 mm	Black	P 743 6
7	ø 1.75 mm	Green	P 743 7

### Titanium Temporary Posts Refill

Size			20 pcs
3	ø 0.90 mm	Brown	P 746 3
4	ø 1.00 mm	Yellow	P 746 4
4.5	ø 1.14 mm	Blue	P 746 4.5
5	ø 1.25 mm	Red	P 746 5
5.5	ø 1.40 mm	Purple	P 746 5.5
6	ø 1.50 mm	Black	P 746 6
7	ø 1.75 mm	Green	P 746 7

### Plastic Lab Burnout Posts Refill

Size			10 pcs	25 pcs	100 pcs
3	ø 0.90 mm	Brown	P 751 3	P 751 3B	P 751 3E
4	ø 1.00 mm	Yellow	P 751 4	P 751 4B	P 751 4E
4.5	ø 1.14 mm	Blue	P 751 4.5	P 751 4.5B	P 751 4.5E
5	ø 1.25 mm	Red	P 751 5	P 751 5B	P 751 5E
5.5	ø 1.40 mm	Purple	P 751 5.5	P 751 5.5B	P 751 5.5E
6	ø 1.50 mm	Black	P 751 6	P 751 6B	P 751 6E
7	ø 1.75 mm	Green	P 751 7	P 751 7B	P 751 7E



## ParaPost® XP™ Gold Posts Refill

- Casting Technique



### No-Ox-Alloy Gold Posts Refill

Size			1 pc	5 pcs
3	ø 0.90 mm	Brown	P 752 3	P 752 3B
4	ø 1.00 mm	Yellow	P 752 4	P 752 4B
4.5	ø 1.14 mm	Blue	P 752 4.5	P 752 4.5B
5	ø 1.25 mm	Red	P 752 5	P 752 5B
5.5	ø 1.40 mm	Purple	P 752 5.5	P 752 5.5B
6	ø 1.50 mm	Black	P 752 6	P 752 6B
7	ø 1.75 mm	Green	P 752 7	P 752 7B

### G-Alloy Gold Posts Refill

Size			1 pc	5 pcs
3	ø 0.90 mm	Brown	P 754 3	P 754 3B
4	ø 1.00 mm	Yellow	P 754 4	P 754 4B
4.5	ø 1.14 mm	Blue	P 754 4.5	P 754 4.5B
5	ø 1.25 mm	Red	P 754 5	P 754 5B
5.5	ø 1.40 mm	Purple	P 754 5.5	P 754 5.5B
6	ø 1.50 mm	Black	P 754 6	P 754 6B
7	ø 1.75 mm	Green	P 754 7	P 754 7B

### Drills Refill two-fluted Compatible with all ParaPost X System Posts

Size				3 pcs
3	ø 0.90 mm	Brown		P 42 3
4	ø 1.00 mm	Yellow		P 42 4
4.5	ø 1.14 mm	Blue		P 42 4.5
5	ø 1.25 mm	Red		P 42 5
5.5	ø 1.40 mm	Purple		P 42 5.5
6	ø 1.50 mm	Black		P 42 6
7	ø 1.75 mm	Green		P 42 7
Assorted 3–6 (one of each size)			6 pcs	P 42 A

## ParaPost® System Sterilizable Organizer



### System Sterilizable Organizer empty

			1 pc	P 69 1
--	--	--	------	--------



### ParaPost® Fiber White / Fiber Lux / Taper Lux

- Great alternatives to metal posts for esthetic, metal-free restorations

**Fiber White:** Chemical Bond between Fiber White and core composite material.

**Fiber Lux:** Translucency enables use of light-cured cements and core materials. Parallel design.

**Taper Lux:** Tapered design for narrow root canals. Translucent for light-cured cements and core materials.



Fiber White Introductory Kit			
One-Office-Visit Technique			PF 160
Metal-free Posts			
Posts / Drill	4.5	ø 1.14 mm	3 pcs / 1 pc
Posts / Drill	5	ø 1.25 mm	3 pcs / 1 pc
Posts	5.5	ø 1.40 mm	2 pcs
Posts / Drill	6	ø 1.50 mm	2 pcs / 1 pc
Universal Hand Driver			1 pc
– compatible with ParaPost Drills (P 42 3 to 7)			

Fiber White Refill One-Office-Visit Technique; Metal-free Posts	
Size	5 pcs
3	PF 161 3
4.5	PF 161 4.5
5	PF 161 5
5.5	PF 161 5.5
6	PF 161 6



Fiber Lux Introductory Kit			
One-Office-Visit Technique			PF 170
Metal-free Posts			
Posts / Drill	3	ø 0.90 mm	2 pcs / 1 pc
Posts / Drill	4	ø 1.00 mm	3 pcs / 1 pc
Posts / Drill	4.5	ø 1.14 mm	3 pcs / 1 pc
Posts / Drill	5	ø 1.25 mm	3 pcs / 1 pc
Posts / Drill	5.5	ø 1.40 mm	2 pcs / 1 pc
Posts / Drill	6	ø 1.50 mm	2 pcs / 1 pc
Universal Hand Driver			1 pc
– compatible with ParaPost® Drills (P 42 3 to 7)			

Fiber Lux Refill One-Office-Visit Technique; Metal-free Posts	
Size	5 pcs
3	PF 171 3
4	PF 171 4
4.5	PF 171 4.5
5	PF 171 5
5.5	PF 171 5.5
6	PF 171 6



## ParaPost® Taper Lux



### Taper Lux Introductory Kit

One-Office-Visit Technique				PF 180
Metal-free Posts				
Posts / Taper Lux Drill	4.5	ø 1.14 mm	5 pcs / 1 pc	
Posts / Taper Lux Drill	5	ø 1.25 mm	5 pcs / 1 pc	
Posts / Taper Lux Drill	5.5	ø 1.40 mm	3 pcs / 1 pc	
Posts / Taper Lux Drill	6	ø 1.50 mm	2 pcs / 1 pc	
Universal Hand Driver			1 pc	
– specially ParaPost Taper Lux Drills are required (P82 A)				

### Taper Lux Refill One-Office-Visit Technique; Metal-free Posts

Size	5 pcs
4.5	PF 181 4.5
5	PF 181 5
5.5	PF 181 5.5
6	PF 181 6

## TENAX®

- Cylindro-conical, passive post system



### Complete Kit

One-Office-Visit + Casting Technique					TEC 1
Universal Hand Driver				1 pc	
Starter Drill				1 pc	
Drills		pcs	Impression/Temporary Posts		pcs
ø 1.1 mm	black	1 pc	ø 1.1 mm	black	10 pcs
ø 1.2 mm	grey	1 pc	ø 1.2 mm	grey	10 pcs
ø 1.3 mm	yellow	1 pc	ø 1.3 mm	yellow	10 pcs
ø 1.4 mm	red	1 pc	ø 1.4 mm	red	10 pcs
ø 1.5 mm	blue	1 pc	ø 1.5 mm	blue	5 pcs
ø 1.6 mm	green	1 pc	ø 1.6 mm	green	5 pcs
Titanium Alloy Posts		pcs	Burn-out Posts		pcs
ø 1.1 mm	black	10 pcs	ø 1.1 mm	black	10 pcs
ø 1.2 mm	grey	10 pcs	ø 1.2 mm	grey	10 pcs
ø 1.3 mm	yellow	10 pcs	ø 1.3 mm	yellow	10 pcs
ø 1.4 mm	red	10 pcs	ø 1.4 mm	red	10 pcs
ø 1.5 mm	blue	5 pcs	ø 1.5 mm	blue	5 pcs
ø 1.6 mm	green	5 pcs	ø 1.6 mm	green	5 pcs



## TENAX® Kits



### Introductory Kit

One-Office-Visit and Casting Technique		TE C 2
Titanium Alloy Posts*	20 pcs	
Starter Drill	1 pc	
Impression/Temporary Posts*	20 pcs	
Universal Hand Driver	1 pc	
Plastic Burn-out Posts*	20 pcs	
Drills (one of each size: 1.2 mm, 1.4 mm)	2 pcs	
*10 of each size 1.2, 1.4 mm		



### Complete Kit

One-Office-Visit + Casting Technique		TE U 1	
Universal Hand Driver	1 pc		
Starter Drill	1 pc		
Drills	pcs	Titanium Alloy Posts	pcs
ø 1.1 mm      black	1 pc	ø 1.1 mm      black	10 pcs
ø 1.2 mm      grey	1 pc	ø 1.2 mm      grey	10 pcs
ø 1.3 mm      yellow	1 pc	ø 1.3 mm      yellow	10 pcs
ø 1.4 mm      red	1 pc	ø 1.4 mm      red	10 pcs
ø 1.5 mm      blue	1 pc	ø 1.5 mm      blue	5 pcs
ø 1.6 mm      green	1 pc	ø 1.6 mm      green	5 pcs



### Introductory Kit

One-Office-Visit Technique		TE U 2
Drills (one of each size: 1.2 mm, 1.4 mm)	2 pcs	
Starter Drill	1 pc	
Titanium Alloy Posts*	20 pcs	
Universal Hand Driver	1 pc	
*10 of each size 1.2, 1.4 mm		





## TENAX® Kits



### Complete Kit

Casting Technique							TET 1
Universal Hand Driver						1 pc	
Starter Drill						1 pc	
Drills			pcs	Impression/Temporary Posts			pcs
ø 1.1 mm	black		1 pc	ø 1.1 mm	black		20 pcs
ø 1.2 mm	grey		1 pc	ø 1.2 mm	grey		20 pcs
ø 1.3 mm	yellow		1 pc	ø 1.3 mm	yellow		20 pcs
ø 1.4 mm	red		1 pc	ø 1.4 mm	red		20 pcs
ø 1.5 mm	blue		1 pc	ø 1.5 mm	blue		10 pcs
ø 1.6 mm	green		1 pc	ø 1.6 mm	green		10 pcs
				Burn-out Posts			pcs
				ø 1.1 mm	black		20 pcs
				ø 1.2 mm	grey		20 pcs
				ø 1.3 mm	yellow		20 pcs
				ø 1.4 mm	red		20 pcs
				ø 1.5 mm	blue		10 pcs
				ø 1.6 mm	green		10 pcs

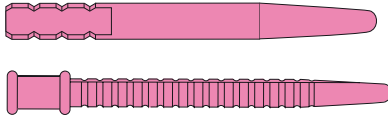


### Starter Drill and Universal Hand Driver

Starter Drill			1 pc				TE DC 1
Universal Hand Driver			1 pc				

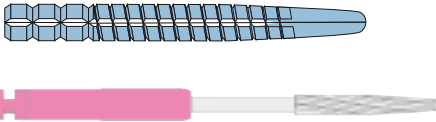


## TENAX® Posts



Impression/Temp. Posts 15 pcs		
ø 1.1 mm	black	TE EP 11
ø 1.2 mm	grey	TE EP 12
ø 1.3 mm	yellow	TE EP 13
ø 1.4 mm	red	TE EP 14
ø 1.5 mm	blue	TE EP 15
ø 1.6 mm	green	TE EP 16

Plastic Burn-out Posts 30 pcs		
ø 1.1 mm	black	TE L 11
ø 1.2 mm	grey	TE L 12
ø 1.3 mm	yellow	TE L 13
ø 1.4 mm	red	TE L 14
ø 1.6 mm	green	TE L 16



Titanium Alloy Posts 15 pcs		
ø 1.1 mm	black	TET 11
ø 1.2 mm	grey	TET 12
ø 1.3 mm	yellow	TET 13
ø 1.4 mm	red	TET 14
ø 1.5 mm	blue	TET 15
ø 1.6 mm	green	TET 16

Drills 3 pcs		
ø 1.1 mm	black	TE A 11
ø 1.2 mm	grey	TE A 12
ø 1.3 mm	yellow	TE A 13
ø 1.4 mm	red	TE A 14
ø 1.5 mm	blue	TE A 15
Assorted 6 pcs (one of each size)		TE A 1



### TENAX® Fiber Trans

- Great alternative for esthetic, metal-free restorations
- Bonds with dual- and self-cure resin cements and all composite materials



#### Fiber Trans Introductory Kit

One-Office-Visit Technique		TFT1
Fiber Trans Posts ø 1.1 mm 5 pcs	Drill ø 1.1 mm	
Fiber Trans Posts ø 1.3 mm 5 pcs	Drill ø 1.3 mm	
Fiber Trans Posts ø 1.5 mm 5 pcs	Drill ø 1.5 mm	
Universal Hand Driver (L590)		

#### Fiber Trans Drills Refill

ø 1.1 mm	3 pcs	TED11
ø 1.3 mm	3 pcs	TED13
ø 1.5 mm	3 pcs	TED15

#### Fiber Trans Posts Refill

		5 pcs
ø 1.1 mm		TFT11
ø 1.3 mm		TFT13
ø 1.5 mm		TFT15



## ParaCore®

- Dual-cured composite resin system with integrated bond
- The "25-ml-version" is indicated for post cementation and core build-ups
- The "5-ml-version" can also be used to cement crowns, bridges, inlays and onlays
- Extraordinary strength for long-term restorations



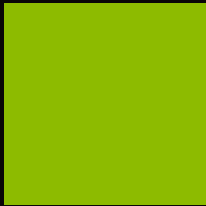
5 ml Intro Kit		
ParaCore 5 ml Intro Kit	Syringe White, 5 ml Syringe Dentin, 5 ml Syringe Dentin SLOW, 5 ml Syringe Trans SLOW, 5 ml	5885
ParaCore SLOW 5 ml Intro Kit	Syringe Dentin SLOW, 2 × 5 ml Syringe Trans SLOW, 2 × 5 ml	6001 3753
Includes:		
ParaBond Non-Rinse Conditioner + Adhesiv A & B	3 × 3 ml	
Mixing Tip Brown short super fine	20 pcs	
Accessories		
5 ml Refills		
ParaCore 5 ml White Refill	Syringe White 2 × 5 ml	5886
ParaCore 5 ml Dentin Refill	Syringe Dentin 2 × 5 ml	5887
ParaCore 5 ml Dentin SLOW Refill	Syringe Dentin SLOW 2 × 5 ml	6001 1391
ParaCore 5 ml Trans SLOW Refill	Syringe Trans SLOW 2 × 5 ml	6001 1392
Includes: Mixing Tip Brown short super fine		20 pcs
25 ml Intro Kits		
ParaCore 25 ml Intro Kit Dentin	Cartridge Dentin 25 ml	1500
ParaCore 25 ml Intro Kit White	Cartridge White 25 ml	1502
Includes:		
ParaBond Non-Rinse Conditioner + Adhesiv A & B	3 × 3 ml	
Mixing Tip Yellow / Oral Tips	20 pcs	
ParaBond Non-Rinse Conditioner + Adhesive A & B	3 × 3 ml	
25 ml Kits		
ParaCore 25 ml Kit Dentin	Cartridge Dentin 25 ml	1501
ParaCore 25 ml Kit White	Cartridge White 25 ml	1503
Includes:		
Mixing Tip Yellow / Oral Tips	20 pcs	
ParaBond Non-Rinse Conditioner + Adhesiv A & B	3 × 3 ml	
Accessories		
25 ml Refills		
ParaCore 25 ml Single Dentin	Cartridge Dentin 25 ml	5853
ParaCore 25 ml Single White	Cartridge White 25 ml	5854
Includes:		
Mixing Tip Yellow / Oral Tips	20 pcs	

# Notes

# Endodontics







**CH** **Coltène/Whaledent AG**  
 Feldwiesenstrasse 20  
 9450 Altstätten / Switzerland  
 T + 41 71 757 53 00  
 F + 41 71 757 53 01  
 info.ch@coltene.com

**CN** **Coltene/Whaledent China Trading Co. Ltd.**  
 Rm. 1103/1104, Bldg. B2, Wu Dong Plaza  
 #9 Chegongzhuang Street, West District  
 Beijing 100044 / P.R. China  
 T + 86 10 6212 3251  
 F + 86 10 6212 3252  
 info.cn@coltene.com

**IT** **Coltène Italia S.r.l.**  
 c/o Polo Tecnologico della Brianza  
 Via Alessandro Volta, 94 - Cond. Bianchi  
 20832 Desio (MB) / Italy  
 T + 39 0362 62 67 32  
 F + 39 0362 63 25 80  
 info.it@coltene.com

**DE** **Coltène/Whaledent GmbH + Co. KG**  
 Raiffeisenstraße 30  
 89129 Langenau / Germany  
 T + 49 7345 805 0  
 F + 49 7345 805 201  
 info.de@coltene.com

**FR** **Coltène/Whaledent s.a.r.l.**  
 75 Boulevard Marie et Alexandre Oyon  
 72058 Le Mans Cedex 2 / France  
 T + 33 2 43 39 30 30  
 F + 33 2 43 39 30 40  
 info.fr@coltene.com

**UK** **Coltène/Whaledent Ltd.**  
 The President Suite  
 Kendal House, Burgess Hill  
 Victoria Way  
 West Sussex, RH15 9NF / UK  
 T + 44 1444 235486  
 F + 44 1444 870640  
 info.uk@coltene.com

**US** **Coltène/Whaledent Inc.**  
 235 Ascot Parkway  
 Cuyahoga Falls, Ohio 44223 / USA  
 T + 1 330 916 8800  
 F + 1 330 916 7077  
 info.us@coltene.com

**IN** **Coltène/Whaledent Private Ltd.**  
 106/107, Hallmark, Vasant Oscar  
 L.B.S Marg, Mulund West  
 Mumbai 400080, Maharashtra / India  
 T + 91 22 25923626  
 F + 91 22 25623165  
 info.in@coltene.com

**BR** **Vigodent SA Indústria e Comércio**  
 Rua Pesqueira 26 Bonsucesso  
 Rio de Janeiro CEP 21041-150 / Brazil  
 T + 5521 3865 5600  
 F + 5521 2280 8411  
 sac@vigodent.com.br

© 2014 Coltène/Whaledent AG – www.coltene.com



**COLTENE**

