

For better dentistry

DENTSPLY

2016

RESTORATIVE PRODUCT **CATALOG**

PRODUCT PORTFOLIO EUROPE

DENTSPLY – For better dentistry!

DENTSPLY MISSION STATEMENT

Deliver solutions “For Better Dentistry” that benefit practitioners and patients everywhere, optimizing our global resources to lead the industry in innovation, quality, and service.

COMPANY OVERVIEW

DENTSPLY International Inc. is a leading manufacturer and distributor of dental and other consumable healthcare products.

Our broad global product platform helps dental professionals serve patients’ oral health care for a lifetime, from preventive services to tooth replacement. DENTSPLY oral health products range from general dental consumables and laboratory products to products supporting the dental specialty markets of orthodontics, endodontics and implants.

Our powerful worldwide dental sales force takes our solutions to market around the globe. Now more than 2,800 members strong, our sales team keeps us close to the dental professionals who rely on our product solutions to serve their patients’ complete oral health needs.

HERITAGE

For over a century, DENTSPLY International has been committed to providing the global dental community with innovative, high quality, cost effective dental products. From our humble beginnings in 1899, the Company has grown to become one of the largest professional dental products companies in the world. With operations in 40 countries, the Company distributes its dental products in over 120 countries under some of the most well established brand names in the dental industry. Worldwide, dental professionals now depend upon DENTSPLY for innovative, new solutions that advance the practice of dentistry and improve oral health for patients throughout the world.

DENTSPLY'S PRODUCT DEVELOPMENT

DENTSPLY’s product development is driven by the creativity of our researchers and collaborators across the globe. From the “fuzzy front end” or creative process of idea generation, through product launch, global cross-functional project teams work collaboratively applying our phase-gate Global Innovation Process to identify and translate unmet needs into innovative clinically relevant product solutions.

NEW PRODUCTS

ceram.x[®] universal nano-ceramic restorative

ceram.x[®]universal is a nano-ceramic, light-cured, radiopaque, universal composite based on the novel SphereTEC™ filler technology indicated for both, direct and indirect restorations.

The spherical, pre-polymerized filler technology called SphereTEC™ leads to a ball-bearing effect that takes the handling properties of ceram.x[®] to the next level:

- ceram.x[®] easily adapts to cavity surfaces but does not stick to hand instruments.
- ceram.x[®] is easy to sculpt precisely and has a high slump resistance.
- ceram.x[®] provides a firm consistency but is at the same time easy to extrude from CompuLes[®] Tips.

ceram.x[®] comprises of five universal CLOUD shades of intermediate translucency named to A1 to A4.

Each CLOUD shade is designed to achieve shade match with a range of VITA[®]1 shades. As a whole, the five CLOUD shades cover all 16 VITA[®] classic shades and allow for esthetic clinical results.

The spherical, granulated fillers consisting of submicron primary glass fillers provide a fast and easy polishing procedure resulting in an outstanding gloss.



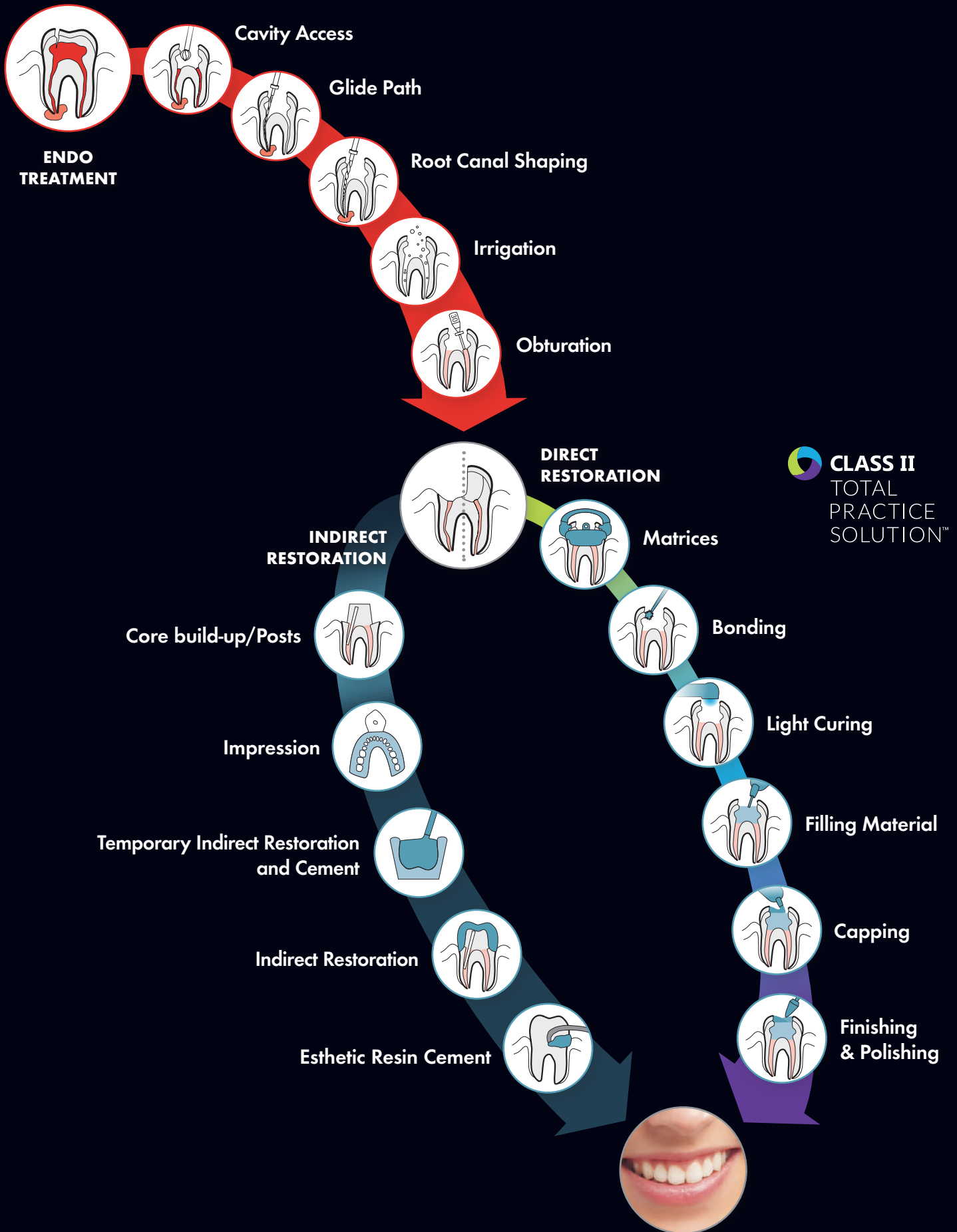
ceram.x[®]gloss

ceram.x[®] gloss finishing & polishing system is a single use product, to finish and polish the surface of composite and compomer restorations in a two-step technique.

ceram.x gloss is a new generation of polishing instruments for a perfect finalization of your ceram.x[®] universal restoration

- Exceptionally intuitive: one shape for all tooth structures
- Excellent gloss: especially harmonized system with diamond abrasives for outstanding polishing results
- Extremely fast: high gloss within just a few moments





SYSTEM SELLING

COMPREHENSIVE PRODUCT AND SUPPORT SOLUTIONS FOR BETTER DENTISTRY!

DENTSPLY offers comprehensive, high quality solutions for the clinicians' needs. Our product solutions are designed to support in the daily business to get optimal results combined with convenience and ease of use. Our smart system sales approaches enable DENTSPLY to establish a long term relationship with the dentist - beyond offering a suitable product.



From root to crown, **RESTODONTICS** represents the idea of "Restorative Endodontics". It aims at restoring the full functionality of a compromised natural tooth by combining a successful endodontic with a successful restorative treatment. Endodontic success and tight coronal seal are closely related, the survival rate of a restored tooth is around 90%* in case the endo and resto treatment is well done.

RESTODONTICS puts the available treatment protocols for an endodontic and restorative restoration in the context of the DENTSPLY product portfolio, by making optimal product recommendations for each clinical step.

DENTSPLY is a leading dental supplier that is able to provide world class products and dental expertise in both the Endodontic and the Restorative segment, with a focus on satisfying the clinicians need for better dentistry.



CLASS II - is a portfolio of top performing products, education opportunities and a support structure uniquely designed to address key challenges and deliver efficient, predictable **CLASS II** outcomes.

Nearly half of all direct restorations placed are **CLASS II**s. Our **CLASS II** portfolio of products offers a confident and controlled approach to the **CLASS II** restoration procedure. Each product is an innovative and proven approach to each **CLASS II** restoration step. They provide you with an effective way to protect the most vulnerable interface, as well as operate efficiently when completing the esthetics of the **CLASS II** restoration.

Better **CLASS II** dentistry delivers a more successful practice, resolving clinical **CLASS II** challenges delivers greater control and confidence.

* Trope, M: Periapical status of endodontically treated teeth in relation to the technical quality of the root filling and the coronal restoration. University of North Carolina, Chapel Hill, Temple Dental School, USA. Int End J (1995) 28, 12-18

Overview

Product Categories and Product Segments

CATEGORY	PRODUCTGROUP	SUBGROUP		
DIRECT RESTORATION	LINERS	CALCIUM HYDROXIDE LINERS	6	
		ADHESIVES	7	
	COMPOSITES & FLOWABLES	ETCH & RINSE ADHESIVES	8-10	
		UNIVERSAL ETCH ADHESIVES	11-12	
		SELF CURE ACTIVATOR	13	
		ADHESIVES ACCESSORIES	14, 87	
		UNIVERSAL COMPOSITES	15-21	
		POSTERIOR COMPOSITES	22-25	
		COMPOMERS	26	
		FLOWABLES	27	
		GLASS IONOMERS	CLASSIC GLASS IONOMERS	28-30
		CORE & POST	CORE BUILD-UP	31-32
	TEMPORIZATION	ZINC-OXIDE EUGENOL	33-34	
RESTORATIVE ACCESSORIES	MATRIX SYSTEMS	CIRCUMFERENTIAL SYSTEMS	35-37	
		SECTIONAL SYSTEMS	38-42	
	MIXING & APPLICATION	APPLICATION	43	
		FINISHING & POLISHING	44-45	
	FINISHING & POLISHING	FINISHING	44-45	
		POLISHING	46-47	
		FINISHING & POLISHING	48	
CURING LIGHTS	LED LIGHTS	49-51		
INDIRECT RESTORATION	CERAMICS	CAD/CAM CERAMICS	52-55	
		IMPRESSION TAKING	56-58	
	IMPRESSION TAKING	ALGINATES	56-58	
		SILICONES / VPS	59-65	
		MIXING DEVICES	66	
		TRAY ADHESIVES	67-68	
		BITE REGISTRATION	69-70	
	PROVISIONAL RESTORATION	TEMPORARY RESTORATION	71-73	
	PERMANENT CEMENTS	TEMPORARY CEMENTS	74	
		SELF-ADHESIVE CEMENTS	75-76	
		RESIN CEMENTS	77-79	
DENTURE LINING		SOFT DENTURE LINING	80	
ENDODONTIC PRODUCTS	CLEANING & DISINFECTION	DISINFECTIVE DRESSING	81	
	OBTURATION	SEALERS	82-85	
TREATMENT SYSTEMS	ENDO-RESTO SYSTEM	ENDO-RESTO SYSTEM	88	
	CORE & POST SYSTEM	CORE & POST SYSTEM	86-87	

Index

All Products in Alphabetic Order

A		P	
AH 26® / AH 26® silverfree	85	Palodent® V3	38-42
AH Plus® / AH Plus Jet®	82-84	PoGo®	46
AH Temp™	81	Prime&Bond® NT	10
Applicator Tip	14, 87	Prime&Bond® XP	8-9
Aquasil	65	Prisma® Gloss™	47
Aquasil Bite	69-70	Q	
Aquasil Ultra	59-64	QuiXfil™	25
AutoMatrix®	35-37	S	
B		SDR®	22-24
Blueprint® Xcreme	56-57	Self Cure Activator	13
C		SmartCem®2	75-76
Calibra®	77-79	SmartLite® FOCUS®	49-51
CELTRA™ DUO	52-55	Spectrum® TPH®3	19-21
ceram.x® gloss	48	T	
ceram.x® universal	15-18	Temporary Guttapercha	73
ChemFil® Rock	28-29	V	
ChemFil® Superior	30	Visco-gel	80
Compules® Tips Gun	43	X	
core-X™ flow	31	X-post™	32
D		Xeno® Select	11-12
DENTSPLY® Core & Post System	86-87	X-flow®	27
DENTSPLY® Endo-Resto System	88		
DeTrey® Conditioner 36	7		
duomix II	66		
Dycal®	6		
Dyract® eXtra	26		
E			
Enhance®	44-45		
F			
Fix Adhesive	67		
Fix Solvent	68		
I			
Integrity®	71-72		
Integrity® TempGrip®	74		
IRM®	33-34		
J			
Jeltrate®	58		

Dycal®

Radiopaque Calcium Hydroxide Composition

Product Description

Dycal Calcium Hydroxide Liner is a two-component, rigid-setting, self-curing material designed for use in direct and indirect pulp capping and as a protective liner under dental adhesives, varnishes, filling materials, cements, and other base materials. It will not inhibit the polymerization of acrylic and composite restorations.

Dycal Tube

Refill

1 x 13 g Dycal Base Paste

1 x 11 g Dycal Catalyst Paste

Shade Dentin

Shade Ivory

61106501

61105501



Index

DIRECT RESTORATION

ADHESIVES

CONDITIONERS

DeTrey® Conditioner 36

Phosphoric Acid Gel for the Etching of Enamel and Conditioning of Dentin

Product Description

DeTrey Conditioner 36 is a blue-tinted gel containing 36% phosphoric acid for the etching of enamel and conditioning of dentin prior to bonding with resin-based materials.

DeTrey Conditioner 36 Syringe



Refill

2 x 3 ml DeTrey Conditioner 36
25 x Applicator Needles

60615208

Index

DIRECT RESTORATION

ADHESIVES

ETCH & RINSE ADHESIVES

Prime&Bond® XP

Etch&Rinse Adhesive



Product Description

Prime&Bond XP is an-Etch&Rinse Adhesive for all direct and indirect restorations. It is designed to bond resin-based light-cured restorative materials to enamel and dentin as well as to metals and ceramic.

Prime&Bond XP stands for eXtra Performance due to high bond strength on enamel and dentin, easy and comfortable application and a high degree of technique tolerance.

Light curing of Prime&Bond XP is not required when used in conjunction with Self Cure Activator (SCA) and DENTSPLY manufactured dual- or self-cure resin restoratives or cements such as Calibra, SmartCem2 or core-X flow.

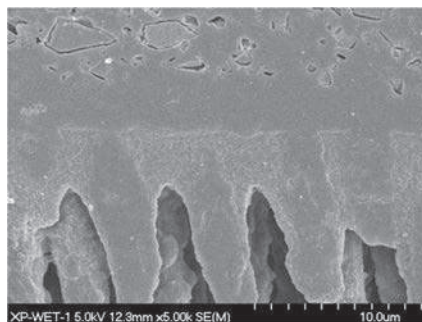
Indications

- Prime&Bond XP is an Etch&Rinse Bonding Agent for use in combination with light-cured direct restoratives or light-cured resin cements.
- In conjunction with Self-Cure Activator (SCA), Prime&Bond XP is indicated for adhesive cementation of indirect restorations in conjunction with dual-cure or self-cure resin cements.

Features	Benefits
Technique Tolerance (= Wet/Dry Robustness)	High performance on both, wet and dry dentin. Less worries, better results.
Universal Use	For all direct and indirect restorations
Dark Cure Mode	When used with SCA + Calibra, SmartCem 2 or core.X flow light curing of the adhesive layer is not necessary.
Unique solvent: tertiary-butanol. Used for the first time in dentistry.	15 minutes working time (in closed CliXdish)
Economic	Up to 300 applications per 5 ml bottle



Economic use: Up to 300 applications per 5 ml bottle.



Prime&Bond XP ensures a well-established hybrid layer in both, wet and dry dentine.



Prime&Bond XP remains usable up to 15 minutes in a closed CliXdish.

Index

DIRECT RESTORATION

ADHESIVES

ETCH & RINSE ADHESIVES

Prime&Bond® XP

Universal Total-Etch Adhesive

Prime&Bond XP Bottle

Mini Refill



- 1 x 2.5 ml Prime&Bond XP**
- 1 x CliXdish
- 1 x Instructions for Use
- 1 x Illustrated Technique Guide

60667402

Refill



- 1 x 5 ml Prime&Bond XP Bottle**
- 1 x 50 Applicator Tips
- 1 x CliXdish
- 1 x Instructions for Use
- 1 x Illustrated Technique Guide

60667281

Eco Refill



- 3 x 5 ml Prime&Bond XP**
- 2 x 50 Applicator Tips
- 2 x CliXdish
- 1 x Instructions for Use
- 1 x Illustrated Technique Guide

60667401

Prime&Bond XP Unit Dose

Refill



- 100 x 0.125 ml Prime&Bond XP Unit Dose**
- 2 x 50 Applicator Tips
- 3 x Unit Dose Holder
- 1 x Instructions for Use

693002

Index

DIRECT RESTORATION

ADHESIVES

ETCH & RINSE ADHESIVES

Prime&Bond® NT

Nano-Technology Dental Adhesive

Product Description

Prime&Bond NT is a universal self-priming dental adhesive designed to bond light-cured composite materials and Dyract compomer materials to enamel and dentin as well as to metals and ceramics.

Prime&Bond NT combines primer and adhesive in a single bottle. The reduction of components and treatment steps simplifies use, maintaining superior bond strengths and protection against microleakage.

By mixing Prime&Bond NT with Self Cure Activator (SCA), a universal, dual-cure self-priming dental adhesive system is obtained.

Prime&Bond NT Bottle

Refill

2 x 4.5 ml Prime&Bond NT
1 x Instructions for Use

60667240



Prime&Bond NT Unit Dose

Refill

80 x 0.125 ml Prime&Bond NT Unit Dose
2 x Unit Dose Holder
1 x 100 Application Tips
1 x Instructions for Use

634356



Index

DIRECT RESTORATION
ADHESIVES

UNIVERSAL ETCH ADHESIVES

Xeno® Select

Self-Etch and Etch&Rinse Adhesive



Product Description

Xeno Select is a one component dental adhesive designed to bond resin-based, light-curing restorative materials to enamel and dentin.

It can be used in all etching techniques:

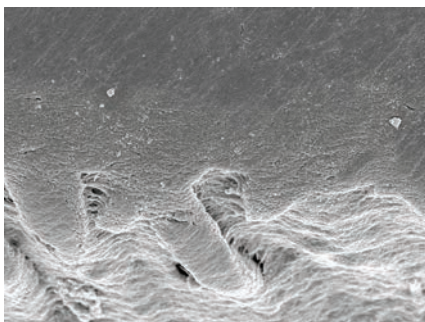
- Self-Etch
- Etch&Rinse
- Selective Enamel Etching

Xeno Select provides high application security even on over-dried dentin. This results in a consistent, reliable performance and virtually no postoperative sensitivities. The acetone-free composition allows chairside storage at room temperature and 30 minutes working time in a closed CliXdish.

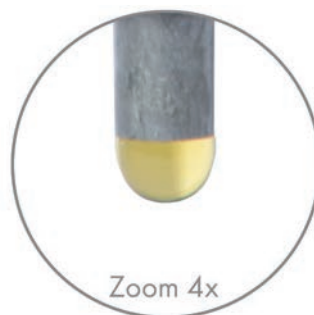
Indications

Direct restoration of all cavity classes in combination with light-curing resin-based restorative materials.

Features	Benefits
Can be used in all etching techniques	Flexibility to choose the preferred etching technique depending on situation
Technique robust on wet and dry dentin	High application security reduces the risk of post-operative sensitivities
Reliable product with a high bonding performance	Tight marginal sealing and superior bond strength
No refrigeration	Chairside storage
30 Minutes storage in closed CliXdish	Long working time
Discreet smell	Patient friendly scent
220 applications per 4ml	Economic, low price per application



Xeno Select provides high application security on over-wet and over-dried dentin.



Economic Dispensing



Remains useable in a closed CliXdish up to 30 minutes

Index

DIRECT RESTORATION

ADHESIVES

UNIVERSAL ETCH ADHESIVES

Xeno® Select

Self-Etch and Etch&Rinse Adhesive

Xeno Select Bottle

Mini Refill

- 1 x 2.5 ml Xeno Select**
- 1 x Clixdish
- 1 x Illustrated Technique Guide
- 1 x Instructions for Use

60667326



Refill

- 1 x 4 ml Xeno Select**
- 1 x 50 Applicator Tips
- 1 x Clixdish
- 1 x Illustrated Technique Guide
- 1 x Instructions for Use

60667323



Eco Refill

- 3 x 4 ml Xeno Select**
- 2 x 50 Applicator Tips
- 2 x Clixdish
- 1 x Illustrated Technique Guide
- 1 x Instructions for Use

60667325



Self Cure Activator

For use in conjunction with XP BOND or Prime&Bond NT

Product Description

Self Cure Activator (SCA) is for use with Prime&Bond XP or Prime&Bond NT in conjunction with a dual-cure or self-cure resin cement or restorative such as Calibra, SmartCem2 or core-X flow.

SCA is suitable for bonding of all indirect restorations including metal, porcelain and composite based crowns, inlays, onlays, veneers, bridge retainers and endodontic posts.

SCA Bottle

Refill

1 x 4.5 ml Self Cure Activator
1 x Instructions for Use

634354K



Index

DIRECT RESTORATION

ADHESIVES

ADHESIVES ACCESSORIES

Applicator Tip

For Application of Adhesives

Product Description

Flocked Applicator Tips for the application of adhesives.

Applicator Tip



Refill of 50

50 x Applicator Tips

658012



Refill of 100

100 x Applicator Tips

60667198

Root Canal Applicator Tip



Refill

50 x Root Canal Applicator Tips

60667197

Index

DIRECT RESTORATION
COMPOSITES & FLOWABLES
UNIVERSAL COMPOSITES

ceram.x® universal

universal nano-ceramic restorative



Product Description

ceram.x® universal is a nano-ceramic, light-cured, radiopaque, universal composite based on the novel SphereTEC™ filler technology indicated for both, direct and indirect restorations.

SphereTEC™ stands for a new filler technology containing granulated spherical fillers in combination with an optimized resin matrix system enabling exceptional handling comfort and esthetics!

- Excellent adaptation and sculptability
- Ingenious simple shading system: 5 shades to cover the full VITA® range
- Fast and easy polishing for outstanding gloss
- Natural esthetics

Features	Benefits
Novel SphereTEC™ filler technology.	Exceptional handling comfort! - easy to adapt to cavity walls, margins and surfaces - no stick to the hand instrument - precisely to sculpt - slump resistant - easy to extrude
Extremely simple CLOUD shade concept.	Exciting clinical results made easy!
Fast & easy polishing.	Extra glossy!
Great mechanical properties!	Excellent choice for long-lasting restorations!

Indications

- Direct restorations of all cavity classes in anterior and posterior teeth.
- Indirect fabrication of inlays, onlays and veneers.



ceram.x is characterized by an excellent handling comfort which is made possible with the novel SphereTEC™ filler technology.



Ingenious simple shading system: 5 shades to cover the full VITA® range.



High maximum gloss after 20 seconds polishing.

ceram.x® universal

universal nano-ceramic restorative

ceram.x universal Compule



Intro Kit

- 24 x 0.25 g ceram.x universal Compules Tips** **60701570**
(4 x Shades A1, A2, A3.5, A4; 8 x Shade A3)
- 1 x CompuTips Gun
- 2 x i-shade Labels
- 1 x Illustrated Technique Guide
- 1 x Instructions for Use



Refill

- 16 x 0.25 g ceram.x universal Compules Tips**
- Shade A1 (=Vita® shades A1, B1, C1) **60701571**
- Shade A2 (=Vita® shades A2, B2, D2) **60701572**
- Shade A3 (=Vita® shades A3, C2, D3, D4) **60701573**
- Shade A4 (=Vita® shades A4, C4) **60701574**
- Shade A3.5 (=Vita® shades A3.5, B3, B4, C3) **60701575**
- Shade BW (Bleach White) **60701576**



Refill

- 52 x 0.25 g ceram.x universal Compules Tips**
- Shade A2 (=Vita® shades A2, B2, D2) **60701582**
- Shade A3 (=Vita® shades A3, C2, D3, D4) **60701583**

Index

DIRECT RESTORATION
COMPOSITES & FLOWABLES
UNIVERSAL COMPOSITES

ceram.x® universal

universal nano-ceramic restorative



Combi Pack

52 x 0.25 g ceram.x universal Compules Tips

- 30 x ceram.x gloss Finishing
- 30 x ceram.x gloss High-Gloss Polishing

- Shade A2 (=Vita® shades A2, B2, D2)
- Shade A3 (=Vita® shades A3, C2, D3, D4)

60701613
60701614

ceram.x universal Syringe



Intro Kit

5 x 3 g ceram.x universal Syringes

60701550

- (Shades A1, A2, A3, A3.5, A4)
- 1 x CliXdish
- 50 x Applicator Tips
- 2 x i-shade Labels
- 1 x Illustrated Technique Guide
- 1 x Instructions for Use



Refill

1 x 3 g ceram.x universal Syringe

- Shade A1 (=Vita® shades A1, B1, C1)
- Shade A2 (=Vita® shades A2, B2, D2)
- Shade A3 (=Vita® shades A3, C2, D3, D4)
- Shade A3.5 (=Vita® shades A3.5, B3, B4, C3)
- Shade A4 (=Vita® shades A4, C4)

60701551
60701552
60701553
60701555
60701554

ceram.x® universal

universal nano-ceramic restorative



Combi Pack

4 x ceram.x universal Syringes (2 x A2, 2 x A3) 60701615

30 x ceram.x gloss Finishing

30 x ceram.x gloss High-Gloss Polishing

ceram.x universal Shade Guide



Refill

1 x ceram.x universal Shade Guide

60701561

Index

DIRECT RESTORATION
COMPOSITES & FLOWABLES
UNIVERSAL COMPOSITES

Spectrum® TPH®3

Universal Microhybrid Composite Restorative



Product Description

Spectrum TPH3 is a visible light-activated, radiopaque microhybrid composite for anterior and posterior restorations. The composite is pre-dosed in Compules Tips or delivered in traditional Syringes and available in a selection of precise Vita shades.

Indications

Spectrum TPH3 is indicated for all cavity classes in anterior and posterior teeth.

Features	Benefits
Optimized polishability by a proprietary blend of glass fillers	Superior surface luster
Universal Composite in a single translucency system (12 Vita shades + 3 special shades)	Only one product for all cavity classes with easy shading system
Creamy, non-sticky consistency	For optimal modeling, will not slump or stick to instruments
Great physical properties!	High strength and durability
CIS (= Compule Identification System)	Each Vita shade is expressed by the cap color (for both Compules Tips and Syringes)



Class IV defect (Photo: Frank Millnar, DDS)



Defect - restored with a single body shade and enamel on incisal



Enamel like surface luster (Photo: DENTSPLY)

Spectrum® TPH® 3

Universal Microhybrid Composite Restorative

Spectrum TPH 3 CompuLe



Starter

52 x 0.25 g Spectrum TPH 3 CompuLe Tips	60605120
7 x Shade A2, A3, A3.5, C2	
3 x Shade O-A, O-A3.5, A4, B1, I-B1, B2, B3, C3	
1 x CompuLe Tips Gun	
1 x Shade Guide	
1 x 4.5 ml Bottle Prime&Bond NT	
1 x 50 Applicator Tips	
1 x 3 ml DETREY Conditioner 36	
1 x 25 Applicator Needles	
1 x Instructions for Use	
1 x Illustrated Technique Guide	



Refill

20 x 0.25 g Spectrum TPH3 CompuLe Tips

Shade A1	60605201
Shade A2	60605202
Shade A3	60605203
Shade A3.5	60605204
Shade B1	60605206
Shade B2	60605207
Shade B3	60605208
Shade C2	60605211
Shade C3	60605212



Refill

10 x 0.25 g Spectrum TPH3 CompuLe Tips

Shade A4	60605205
Shade C4	60605213
Shade D3	60605215
Shade O-A2	60605220
Shade O-A3.5	60605221
Shade I-B1	60605222

Index

DIRECT RESTORATION
COMPOSITES & FLOWABLES
UNIVERSAL COMPOSITES

Spectrum® TPH® 3

Universal Microhybrid Composite Restorative

Spectrum TPH 3 Syringe



Refill

1 x 4.5 g Spectrum TPH 3 Syringe

Shade A1	60605301
Shade A2	60605302
Shade A3	60605303
Shade A3.5	60605304
Shade A4	60605305
Shade B1	60605306
Shade B2	60605307
Shade B3	60605308
Shade C2	60605311
Shade C3	60605312
Shade O-A2	60605323
Shade O-A3.5	60605321
Shade I-B1	60605322

NEXT

SmartLite® FOCUS® | p. 49
Compact Pen-Style, LED Curing Light

Enhance® Multi
Multiple Use Finishing & Polishing System

PoGo®
One-Step Diamond Micro-Polisher

21

Index

DIRECT RESTORATION
COMPOSITES & FLOWABLES
POSTERIOR COMPOSITES

SDR®

Smart Dentin Replacement



Product Description

SDR Posterior Bulk Fill Flowable Base is a one-component, visible light-cured, radioopaque resin composite restorative material. It is designed to be used as a base or liner in Class I and II restorations. It is also suitable as a stand-alone restorative material in non-occlusal-contact applications.

SDR material has handling characteristics typical of a "flowable" composite, but can be placed in 4 mm increments with minimal polymerization stress. SDR material has a self-leveling feature that allows intimate adaptation to the prepared cavity walls.

It is available in one universal shade. When used as a base/liner, it is designed to be overlaid with a methacrylate based universal/posterior composite for replacing missing occlusal/facial enamel.

There is no capping required for small Class I restorations of permanent molars and for Class I and Class II restorations of deciduous molars.

Features	Benefits
SDR Filling Technique	Bulk placement up to 4 mm Simple and convenient application No learning curve
Self-leveling	Excellent cavity adaptation Replaces lining composite
Single universal shade	Simplicity, small inventory
Compula Tip delivery	Precise placement of SDR
Radioopacity	Visibility on X-rays

Indications

- Base in cavity Class I & II direct restorations
- Liner under direct restorative materials – Class II box liner
- Pit & Fissure Sealant
- Conservative Class I restorations
- Core build-up
- Class I & II restorations of deciduous molars without capping



Simple and fast SDR Filling Technique



Esthetic result with ceram.x universal capping material.



The layer thickness of SDR is controlled with a periodontal probe.

Index

DIRECT RESTORATION
COMPOSITES & FLOWABLES
POSTERIOR COMPOSITES

SDR®

Smart Dentin Replacement

SDR Compula



Intro Kit

45 x 0.25 g SDR Compula Tips, Universal Shade

- 1 x Illustrated Technique Guide
- 1 x Compules Tips Gun
- 1 x SDR Storage Box

with 1 x 2.5 ml Xeno V+
with 1 x 2.5 ml Xeno Select

60603000
60603020



Refill

15 x 0.25 g SDR Compula Tips, Universal Shade **60603002**



Eco Refill

50 x 0.25 g SDR Compula Tips, Universal Shade **60603003**

Index

DIRECT RESTORATION
COMPOSITES & FLOWABLES
POSTERIOR COMPOSITES

SDR®

Smart Dentin Replacement

SDR Syringe

Refill

3 x 1 g SDR Syringe, Universal Shade

60603005

- 20 x SDR Applicator Needles
- 1 x Instructions for Use
- 1 x Illustrated Technique Guide



Eco Refill

10 x 1 g SDR Syringe, Universal Shade

60603011

- 60 x SDR Applicator Needles
- 1 x Instructions for Use
- 1 x Illustrated Technique Guide



Accessories

60 x SDR Syringe, Applicator Needles

60603007



Index

DIRECT RESTORATION
COMPOSITES & FLOWABLES
POSTERIOR COMPOSITES

QuiXfil™

Posterior Restorative

Product Description

QuiXfil is a resin-based restorative material specially designed for posterior use. QuiXfil allows a simplified and fast application technique without compromising safety and efficacy.

QuiXfil utilises a special filler technology resulting in a unique high filler load. QuiXfil exhibits wear resistance and physical properties suitable for occlusal stress-bearing restorations.

QuiXfil is available in pre-dosed Compules Tips for direct intra-oral and in one universal shade.

QuiXfil Compule



Refill

20 x 0.28 g QuiXfil Compules Tips
Universal Shade

60605606



Eco Refill

100 x 0.28 g QuiXfil Compules Tips
Universal Shade

60605670

Dyract® eXtra

The Caries Preventing Restorative

Product Description

Dyract eXtra is a light-curing restorative material for all cavity classes in anterior and posterior teeth.

Dyract eXtra restorative combines the fluoride release of glass ionomer materials with the strength, longevity and esthetics of a light-curing composite.

Dyract eXtra restorations continuously release fluoride ions, act on the tooth restoration interface as an acid buffer and effectively support the prevention of approximal caries. The choice of Dyract eXtra restorative for patients prone to risk of caries is therefore advisable as an additional care against the onset of new caries.

The Dyract restorative family belongs to the most frequently used restorative materials worldwide. More than 20 years of experience and clinical success are documented in 45 clinical investigations and over 500 scientific publications.

Dyract eXtra Compule



Refill

20 x 0.25 g Dyract eXtra Compules Tips

Shade A2	60604901
Shade A3	60604902
Shade A3.5	60604903
Shade A4	60604904
Shade B1	60604905
Shade B3	60604906
Shade C2	60604907
Shade C3	60604908
Shade O-A2	60604909
Shade O-B3	60604910

Index

DIRECT RESTORATION
COMPOSITES & FLOWABLES
FLOWABLES

X-flow®

Universal Flowable Restorative

Product Description

X-flow is a smooth flowing, light-curing, radiopaque composite material ideal for restoration of small cavities, for lining and for luting of ceramic or composite inlays and onlays.

X-flow is delivered in Compula Tips for direct intraoral application and is available in VITA shades A1/B1, A2, A3, A3.5, A4 and O-A3 (opaque shade).

X-flow adapts to the cavity walls without the use of hand instruments. X-flow is used following application of a bonding.

X-flow Compula



Refill

16 x 0.25 g X-flow Compula Tips

Shade A1/B1	60608105
Shade A2	60608102
Shade A3	60608103
Shade A3.5	60608107
Shade A4	60608104
Shade O-A3 (opaque)	60608111



Assortment

16 x 0.25 g X-flow Compula Tips

(4 x each Shades A1/B1, A2, A3, O-A3)
1 x Instructions for Use

60608100

ChemFil® Rock

Advanced Glass Ionomer Restorative



Product Description

ChemFil Rock restorative is a high strength zinc-reinforced glass ionomer restorative with the following characteristics:

- Resistance to fracture and wear
- Marginal seal in dentin and enamel comparable with composites
- Self-adhesive to enamel and dentin
- Releases fluoride
- Packable, non-sticky and sculptable consistency
- Bulk placement and self-cure setting
- High contrast to tooth substance through high opacity
- Effective capsule application with ergonomic applicator

Capsule Extruder 2 is the device designed for extrusion and direct application of ChemFil Rock restorative capsules.

Indications

- Semi-permanent restorations of Class I and II cavities in posterior teeth
- Restoration of deciduous teeth
- Restoration of Class V lesions and cavities
- Restoration of Class III cavities
- Base/core-build-up

Features	Benefits
First Zinc-Reinforced Glass Ionomer Restorative	Higher initial strength
Superior fracture & wear resistance	Superior long-term durability
No cavity conditioning and no varnish required	Simple and fast placement procedure
Radiopacity	Facilitates visibility of restoration on X-rays
Five shades available: A1, A2, A3, A4-O and Contrast-White	Covers a wide range of tooth shades



Simple procedure - packable, non-sticky



High opacity for good differentiation (Photo: Dr Uwe Pompl, Eggolsheim, Germany)



Excellent adaptation to the cavity walls in cross-sectional view (Photo: DENTSPLY)

ChemFil® Rock

Advanced Glass Ionomer Restorative

ChemFil Rock Capsule



Intro

- | | |
|--|-----------------|
| 40 x ChemFil Rock Capsules
(A1, A2, A3, Contrast White, 10 capsules each)
1 x Capsule Extruder 2
1 x Illustrated Technique Guide
1 x Instructions for Use | 60606590 |
|--|-----------------|



Refill

- | | |
|--|-----------------|
| 50 x ChemFil Rock Capsules
1 x Illustrated Technique Guide
1 x Instructions for Use | |
| Shade A1 | 60606591 |
| Shade A2 | 60606592 |
| Shade A3 | 60606593 |
| Shade A4-O | 60606594 |
| Shade Contrast White | 60606595 |

Index

DIRECT RESTORATION

GLASS IONOMERS

CLASSIC GLASS IONOMERS

ChemFil® Superior

Fast Setting Glass Ionomer Restorative Material

Product Description

ChemFil Superior is a fast-setting glass ionomer restorative material consisting of a blend of aluminosilicate glass and polyacrylic acid. The powder is mixed with distilled water to produce a filling material which adheres to dentin and enamel producing tightly sealed, strong and esthetic restorations.

ChemFil Superior Jar



Intro Pack

7 x 10 g ChemFil Superior Powder

60606515

(mix powder with water)
Shades: L, LYG, LY, DY, DG, LG, GB
1 x 12.5 ml ChemVarnish
1 x 6 ml ChemFil Tooth Cleanser
1 x Shade Guide
1 x Water Dispensing Bottle
Accessories



Refill

1 x 10 g ChemFil Superior Powder

(mix powder with water)
incl. Powder Measure and Water Dispensing Bottle

Shade L = Light

60606520

Shade LYG = Light Yellow Grey

60606530

Shade LY = Light Yellow

60606540

Shade DY = Dark Yellow

60606550

Shade DG = Dark Grey

60606560

Shade LG = Light Grey

60606570

Shade GB = Grey Brown

60606580

Index

DIRECT RESTORATION
CORE & POST
CORE BUILD-UP

core-X™ flow

Dual-Cure Core Build-Up Material and Cement for Endodontic Posts

Product Description

core-X flow consists of two components, base and catalyst, which when mixed form a dual-cured, highly filled, composite resin core build-up and post-cementation material.

core-X flow uses a biocompatible urethane resin and is supplied in a tooth-colored shade which is ideal in situations where esthetics and show-through of the core are of primary concern.

core-X flow Syringe



Refill

4 x 4.75 g core-X flow Syringes
20 x Mixing/Intraoral Tips

60667330

Mixing Tip/Intraoral Tip



Refill

40 x Mixing/Intraoral Tips
for core-X flow, AH Plus Jet, SmartCem2

60620116

Index

DIRECT RESTORATION

CORE & POST

CORE BUILD-UP

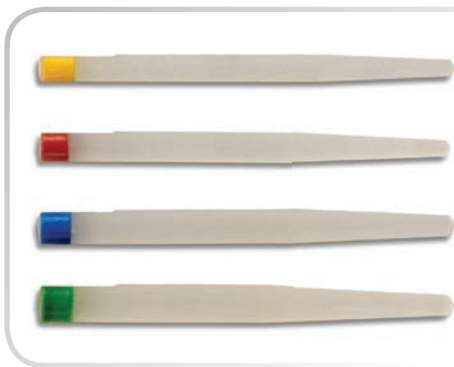
X·post™

Endodontic Fiber Post

Product Description

X·post is an endodontic fiber post for direct, adhesive core build-up to support the coronal restoration in case of insufficient residual tooth substance.

X·post Endodontic Fiber Post



Refill

5 x X·post Endodontic Fiber Post

- Size 1 (yellow)
- Size 2 (red)
- Size 3 (blue)
- Size 4 (green)

60667332
60667333
60667334
60667335

Index

DIRECT RESTORATION
TEMPORIZATION
ZINC-OXIDE EUGENOL

IRM®

Intermediate Restorative Material

Product Description

IRM restorative is a polymer-reinforced zinc oxide-eugenol composition restorative material designed for intermediate restorations intended to remain in place for no longer than one year.

IRM restorative may also be used as a base under restorative materials and cements that do not contain resin components.

IRM is available in the following deliveries:

- The IRM powder/liquid version for hand mixing
- The IRM caps for machine mixing

IRM Jar

Standard Pack

1 x 40 g IRM Powder
1 x 15 ml IRM Liquid

60661500



Powder Refill

1 x 40 g IRM Powder

60661520



Index

DIRECT RESTORATION
TEMPORIZATION
ZINC-OXIDE EUGENOL

IRM®

Intermediate Restorative Material



Liquid Refill

1 x 15 ml IRM Liquid

60661510

IRM Cap



Standard Pack

50 x 0.35 g IRM Cap

610200

AutoMatrix®

Retainerless Matrix System



Product Description

The AutoMatrix system allows matrix placement and retention without the need for bulky retainers, allowing for ease of placement, better access, clear view of the operating field and greater patient comfort.

The single use, circumferential AutoMatrix system bands allow proper subgingival and proximal adaptation.

The AutoMatrix matrices are available in four height/width and thickness configurations. All AutoMatrix matrix sizes fit teeth of any circumference.

Indications

AutoMatrix Retainerless Matrix System is indicated where placement of a matrix band around a prepared tooth will facilitate contouring of a direct placement restorative material (e.g. Class II preparations).

Features	Benefits
Since 1979	Proven system
Retainerless matrix system	Clear field vision. Better patient comfort. Simultaneous multiple bands placement in a quadrant possible.
Conical form of matrix bands	Better anatomical adaptation
AutoMate III tightening device with torque control	Optimal control of band tension. "Click" indicates optimal tension.
4 heights and 2 thicknesses of matrix bands	Fits all tooth sizes and clinical situations in posteriors.
Pre-rolled matrix bands	Select, place, tighten, done!
Auto-lock of matrix bands	Makes sure band is tightly locked during treatment.



AutoMatrix is ideal for larger preps and those that have buccal or lingual extensions (Photo: Dentsply)



Band Tightening: Insert tip of the tightener into coil, rotate clockwise. After 3 clicks, stop.



Occlusal view on a final restoration made with AutoMatrix (Photo: Dentsply)

Index

RESTORATIVE ACCESSORIES

MATRIX SYSTEMS

CIRCUMFERENTIAL SYSTEMS

AutoMatrix®

Retainerless Matrix System

AutoMatrix Matrice

Starter Pack

24 x Medium-Thin Bands

62422501

24 x Medium-Regular Bands

24 x Narrow-Regular Bands

24 x Wide-Regular Bands

1 x Automate III Tightening Device

1 x Pair of Snippers



Refill

72 x Bands of the same size

Medium-Thin

62422510

Narrow-Regular

62422511

Medium-Regular

62422512

Wide-Regular

62422513



AutoMatrix Accessories

Refill

1 x Pair of Snippers

62422601



Index

RESTORATIVE ACCESSORIES

MATRIX SYSTEMS

CIRCUMFERENTIAL SYSTEMS

AutoMatrix®

Retainerless Matrix System



Refill

10 x Catch-Tray

62422605



Refill

1 x AutoMate III Tightening Device

62422602



Refill

1 x Extra Shaft Assembly

62422603



Refill

1 x Repair Set for Snipper

963010

Palodent® V3

Sectional Matrix System



Product Description

Palodent V3 is the latest sectional matrix system from DENTSPLY. It is dedicated for use in Class II cavities where it delivers predictable, accurate contacts and a natural restoration contour.

The system includes a molar and premolar ring, 5 different sized tabbed matrix bands, 5 different sized EZ coat bands, 3 wedges, 3 wedgeguards and specially designed pin-tweezers and forceps. All components work together easily and deliver predictable tight contacts, tight gingival seal, minimized flash and finishing.

Palodent V3 Matrices EZ Coat have a micro-thin non-stick finish making matrix removal even easier.

Indications

- The Palodent® V3 System is indicated for Class II restorations to facilitate the contouring of a direct placement restorative materials.
- The Palodent® V3 WedgeGuard is indicated for pre-operative placement to protect surfaces adjacent to Class II, Class III, veneer and crown preparations

Features	Benefits
2 NiTi rings with anatomically shaped plastic fines	Outstanding spring strength and memory: better contact point, less lateral flash, higher longevity. Stable on the tooth.
Protective Wedge-Guards	Protects neighbour tooth during the prep. Turns into a wedge.
Anatomical wedges for a better seal	Soft wings compress and flare for easy placement, excellent adaption of matrix band. Gentle to papilla.
Tabbed contoured matrices for great contacts	Easy to place and remove. Apron for gingival seal. Built-in marginal ridge for occlusal contour. 5 sizes.



Palodent V3 NiTi rings, „universal“ (for molars) and „narrow“ (for premolars).



Rings do not fall into the cavity even when a cusp is missing (Photo: Dr Dao, France).



Palodent Plus made composite restorations with tight proximal contact area. (Photo: Dr. Reis).

Palodent® V3

Sectional Matrix System

Palodent V3 Kit



Introductory Kit

- | | |
|---|----------------|
| 100 x Palodent V3 Matrices | 659700V |
| (25 x each size 3.5 mm, 4.5 mm, 5.5 mm, 6.5 mm) | |
| 75 x Wedges (25 x each size: small, medium, large) | |
| 30 x WedgeGuards (10 x each size: small, medium, large) | |
| 1 x Universal Ring | |
| 1 x Narrow Ring | |
| 1 x Forceps | |
| 1 x Pin-Tweezers | |
| 1 x Instructions for Use | |
| 1 x Illustrated Technique Guide | |



Starter Kit

- | | |
|--|-----------------|
| 20 x Palodent V3 Matrices (5 x 4.5 mm, 15 x 5.5 mm) | 62500005 |
| 15 x Wedges (5 x each size: small, medium, large) | |
| 5 x WedgeGuards (medium) | |
| 2 x Universal Rings | |
| 1 x Forceps | |
| 1 x Pin-Tweezers | |
| 1 x Instructions for Use | |
| 1 x Illustrated Technique Guide | |

Palodent V3 WedgeGuard



Refill

- | | |
|-------------------------------------|----------------|
| 50 x Palodent V3 WedgeGuards | |
| Size Small | 659830V |
| Size Medium | 659840V |
| Size Large | 659850V |

Palodent® V3

Sectional Matrix System

Palodent V3 Wedge



Refill

100 x Palodent V3 Wedges

Size Small	659780V
Size Medium	659790V
Size Large	659800V

Palodent V3 Matrice



Refill of 50

50 x Palodent V3 Matrices

Size 3.5 mm	659710V
Size 4.5 mm	659720V
Size 5.5 mm	659730V
Size 6.5 mm	659750V
Size 7.5 mm	659860V



Refill of 100

100 x Palodent V3 Matrices

Size 5.5 mm	659740V
-------------	----------------

Palodent® V3

Sectional Matrix System

Palodent V3 Matrice EZ Coat



Refill of 50

50 x Palodent V3 Matrices EZ Coat

Palodent V3 Matrices EZ Coat have a micro-thin, non-stick finish that minimizes the chance that bonding agent or composite sticks to the band, making matrix removal easier.

Size 3.5 mm	659610V
Size 4.5 mm	659620V
Size 5.5 mm	659630V
Size 6.5 mm	659650V
Size 7.5 mm	659660V



Refill of 90

90 x Palodent V3 Matrices EZ Coat

659640V

Palodent V3 Matrices EZ Coat have a micro-thin, non-stick finish that minimizes the chance that bonding agent or composite sticks to the band, making matrix removal easier.

Palodent V3 Ring



Refill

Palodent V3 Ring

1 x Universal Ring	659900V
2 x Universal Ring	659760V
2 x Narrow Ring	659770V

Palodent® V3

Sectional Matrix System

Palodent V3 Forceps

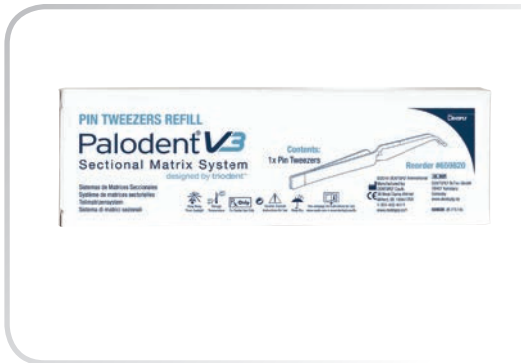


Refill

1 Palodent V3 Forceps

659810V

Palodent V3 Pin Tweezers



Refill

1 x Pin Tweezers

659820V

Index

RESTORATIVE ACCESSORIES
MIXING & APPLICATION
APPLICATION

Compules® Tips Gun

Applicator Gun

Product Description

Applicator gun for all DENTSPLY filling materials delivered in Compules Tips.

Compules Tips Gun



Refill

1 x Compules Tips Gun

60665900

Enhance®

Finishing and Polishing System

Product Description

The Enhance Finishers (Discs, Cups and Points) are pre-mounted, single use, aluminum oxide impregnated, cured urethane dimethacrylate resin finishers designed for preparing composite surfaces for their final polish.

When used as directed, this system will yield a smooth, contoured surface with pre-polished surface luster on composites and compomers.

For optimal surface polish, follow the use of Enhance Finishers with appropriate polisher, e.g. PoGo Polishing System or Prisma Gloss Composite Polishing Pastes.

Enhance Tip

System Kit



20 x Enhance Finishing Discs

624075

10 x Enhance Finishing Points

10 x Enhance Finishing Cups

25 x Enhance Polishing Cups

1 x Metal Mandrel

1 x 4 g Prisma Gloss Composite Polishing Paste

1 x 4 g Prisma Gloss Composite Polishing Paste Extra Fine

Refill



30 x Enhance Finishing Tips

Cups

624055X

Points

624065X

Discs

624045X

Index

RESTORATIVE ACCESSORIES
FINISHING & POLISHING
FINISHING

Enhance®

Finishing and Polishing System

Enhance Polishing Cup



Refill

100 x Enhance Polishing Cups **624020**
1 x Mandrel
For use with Prisma Gloss Polishing Paste

Enhance Metal Mandrel



Refill

3 x Metal Mandrel **624025**
for Enhance Polishing Cups

Index

RESTORATIVE ACCESSORIES
FINISHING & POLISHING
POLISHING

PoGo®

One Step Diamond Micro-Polisher

Product Description

The PoGo Polishers (Discs, Cups and Points) are pre-mounted, single-use diamond impregnated cured urethane dimethacrylate resin polishing devices designed for use in the final polishing of all accessible composite resin restorations.

When used as directed, the PoGo Polishing System will yield a high surface luster on hybrid composites such as Esthet-X HD, SpectrumTPH3, SureFil High Density Posterior Restorative, Quixfil and micro-filled composite restoratives.

The PoGo Polishing System is also effective in final polishing of compomers, flowable composites and compomer restoratives such as Esthet-X Flow, X-Flow, Dyract eXtra and Dyract flow.

Rebranding in 2016

PoGo® becomes enhance® PoGo®



PoGo Tip



Refill

30 x PoGo Polishers

Discs	662010Y
Points	662022Y
Cups	662023Y



Combo Refill

30 x PoGo Polishers
(10 x Cups, 10 x Points, 10 x Discs)

662025Y

Prisma® Gloss™

Composite Polishing Pastes

Product Description

Prisma Gloss Composite Polishing Pastes are water-soluble, aluminum oxide pastes designed for final polishing of anterior and posterior composite restorations, diastema closures, esthetic incisal lengthenings or veneers.

When applied with the Enhance Foam Polishing Cup, Prisma Gloss Polishing Paste improves the smoothness of the finished surface of microfil composites to a final, high luster surface, or pre-polishes by smoothing finished surfaces of hybrid and micro-hybrid composites to low luster.

For hybrid and micro-hybrid composites, following with Prisma Gloss Extra Fine Polishing Paste results in a final, high luster polished surface.

Prisma Gloss Syringe



Refill

1 x 4 g Prisma Gloss Syringe

Regular
Extrafine

631400
631450

ceram.x® gloss

finishing & polishing system

Product Description

ceram.x gloss finishing & polishing system is a single use product, to finish and polish the surface of composite and compomer restorations in a two-step technique.

A new generation of polishing instruments for a perfect finalization of your ceram.x universal restoration.

- Exceptionally intuitive: one shape for all tooth structures
- Excellent gloss: especially harmonized system with diamond abrasives for outstanding polishing results
- Extremely fast: high gloss within just a few minutes

ceram.x gloss Finishing and Polishing

Refill

30 x Finishing
30 x High-Gloss Polishing

60701612



ceram.x gloss & ceram.x universal

Combi Pack

52 x 0.25 g ceram.x universal Compules Tips
30 x ceram.x gloss Finishing
30 x ceram.x gloss High-Gloss Polishing

Shade A2 (=Vita® shades A2, B2, D2)
Shade A3 (=Vita® shades A3, C2, D3, D4)

60701613
60701614



Combi Pack

4 x ceram.x universal Syringes (2 x A2, 2 x A3)
30 x ceram.x gloss Finishing
30 x ceram.x gloss High-Gloss Polishing

60701615



SmartLite® FOCUS®

Compact Pen-Style, LED Curing Light



Product Description

The SmartLite FOCUS curing light is a cordless pen-style, LED light polymerization device for use by trained dental professionals in dental offices or dental laboratories. SmartLite FOCUS curing light is characterized by:

- Small size and lightweight ergonomic design
- Cordless design with convenient handling features and exchangeable battery pack
- Smart battery charging mechanism with virtually permanent light operating availability

Indications

- Intraoral light-curing of direct restorative materials, adhesives and sealants which cure at a wave length of 460-490 nm.
- Adhesive luting of light-transmissive indirect restorations with luting material curing at a wave length of 460-490 nm.

Features	Benefits
SmartLite Focus optics reduces divergency	Reliable light-curing over larger distances
Slim pen-style design	Excellent intraoral access
Weight only 100 g	Convenient clinical handling
Only one button	Easy one-touch handling
One mode for direct and indirect restorations	SmartLite Focus is easy to use in all situations.
Stable energy output after prolonged storage	Virtually permanent availability
Exchangeable battery pack	Less service downtimes



Reliable Light Curing over larger distances and homogeneous beam profile



Excellent intraoral access



Virtually permanent availability

SmartLite® FOCUS®

Compact Pen-Style, LED Curing Light

SmartLite FOCUS Complete Unit



Introductory Kit

1 x SmartLite FOCUS	64450020
1 x SmartLite FOCUS Charging Base	
1 x SmartLite FOCUS Battery Pack	
5 x SmartLite FOCUS Shields	
300 x SmartLite Sleeves	
1 x SmartLite FOCUS Power Connector	
1 x Instructions for Use	
1 x Material Curing Guide	



Refill

1 x SmartLite FOCUS	64450060
1 x SmartLite FOCUS Battery Pack	
1 x Instructions for Use	
1 x Material Curing Guide	

SmartLite FOCUS Accessories



Refill

1 x SmartLite FOCUS Charging Base	64450070
--	-----------------

Index

RESTORATIVE ACCESSORIES
CURING LIGHTS
LED LIGHTS

SmartLite® FOCUS®

Compact Pen-Style, LED Curing Light



Refill

1 x SmartLite FOCUS Battery Pack

64450021



Refill

300 x SmartLite Sleeves

64450030



Refill

5 x SmartLite FOCUS Eye Protection Shields

64450040



Refill

1 x SmartLite FOCUS Power Connector
with exchangeable EU, UK, US and AUS adapters.

64450050

CELTRA™ DUO

Celtra Blocks for CEREC and inLab



Product Description

CELTRA Duo is a CAD/CAM-Block for chairside use with the Sirona CEREC-unit. It contains a new high-strength glass ceramic made from zirconia-reinforced Lithium-Silicate which provides high flexural strength, state-of-the-art esthetics through its opalescence, translucency and easy handling.

CELTRA Duo transfers these features into clinical benefits by offering the choice of two handling options: It can either be used without firing giving twice the flexural strength of conventional glass ceramics or with additional glazing giving increased strength similar to Lithium Di-Silicate.

Being one block with two options, CELTRA Duo combines the advantages of other CEREC-blocks in one product.

Indications

CELTRA Duo is suitable for veneers, inlays, onlays, partial crowns, full crowns in the anterior and posterior regions as well as for anterior and posterior single-tooth open implant superstructures.

Features	Benefits
High glass content: High translucency, opalescence, fluorescence	Exceptional esthetic: chameleon effect
10% zirconia: High mean flexural strength	Outstanding strength: for safety and long-term stability
Very small lithium silicate crystals: ultra-fine microstructure	Allow the material to be finished and polished in its final crystallized, tooth-colored state
1 block, 2 technique options	No need to stock two systems of CAD/CAM blocks
	One solution for all indications



In-depth opalescence and fluorescence through increased glass content.



Polished crown ready for luting (Photo: Dr Marcel Ender, Böhrlingen, Germany)



Crown in-situ (Photo: Dr Marcel Ender, Böhrlingen, Germany)

CELTRA™ DUO

Celtra Blocks for CEREC and inLab

CELTRA DUO Block

Starter Kit

19 x CELTRA DUO CAD/CAM Blocks

5365490113

- 1 x 5 g Glaze
- 1 x Brush
- 1 x Fixing Pad
- 1 x Set of Fixing Pins



Refill

4 x CELTRA DUO CAD/CAM Blocks, Size C14

- Low Translucency (LT) A1 5365411005
- Low Translucency (LT) A2 5365411015
- Low Translucency (LT) A3 5365411025
- Low Translucency (LT) A3.5 5365411035
- Low Translucency (LT) B2 5365411065
- High Translucency (HT) A1 5365411205
- High Translucency (HT) A2 5365411215
- High Translucency (HT) A3 5365411225



Index

INDIRECT RESTORATION

CERAMICS

CAD/CAM CERAMICS

CELTRA™ DUO

Celtra Blocks for CEREC and inLab

CELTRA DUO Stain&Glaze

Refill

1 x 5 g CELTRA DUO Universal Glaze in Jar

D601322



Refill

1 x 5 g CELTRA DUO Stain in Jar

Stain 0	D601500
Stain 1	D601501
Stain 2	D601502
Stain 3	D601503
Stain 4	D601504
Stain i1	D601511
Stain i2	D601512
White	D601520
Crème	D601521
Sunset	D601522
Copper	D601523
Khaki	D601524
Olive	D601525
Mahagony	D601526



Refill

CELTRA DUO Universal Stain&Glaze Liquid in Bottle
for thinning of CELTRA Stain or Glaze

15 ml
50 ml

D601315
D601350



Index

INDIRECT RESTORATION

CERAMICS

CAD/CAM CERAMICS

CELTRA™ DUO

Celtra Blocks for CEREC and inLab

CELTRA DUO Correction Porcelain



Refill

1 x 15 g CELTRA DUO Correction Porcelain

D601229



Refill

1 x 15 ml Modelling Liquid Universal

D601126

NEXT

CELTRA™ Cementation System
Dual-Cure Luting System for CAD-/
CAM Restorations

Calibra® | p. 77
Esthetic Resin Cement

XP BOND®
Universal Total-Etch Adhesive

Blueprint® Xcreme

Dust-Free Alginate Impression Materials

Product Description

Blueprint Xcreme alginate is an irreversible hydrocolloid material for taking dental impressions.

Blueprint Xcreme alginate impressions allow the option of delayed pouring either in the office or shipped to an off-site laboratory.

Blueprint Xcreme alginate powders have been especially formulated to eliminate dust during mixing. The material reduces the concentration of airborne particles to a concentration lower than the limit of detection.

Blueprint Xcreme alginate complies with ISO 1563 and EN 21563, respectively.

Blueprint Bag

Refill

2 x 500 g Blueprint Xcreme Bag

60501100

- 1 x Storage Tub
- 1 x Spoon
- 1 x Cup
- 1 x Instructions for Use



Eco Refill

12 x 500 g Blueprint Xcreme Bag

60501108

- 1 x Storage Tub
- 1 x Spoon
- 1 x Cup
- 1 x Instructions for Use



Blueprint® Xcreme

Dust-Free Alginate Impression Materials

Blueprint Measure Set



Refill

- 1 x Spoon
- 1 x Cup
- 1 x Instructions for Use

60501998

Blueprint Spatula



Refill

- 1 x Alginate Spatula Ash

62419003

Jeltrate®

Regular Set and Fast Set Alginate Impression Material

Product Description

Jeltrate Alginate Impression Material is an irreversible hydrocolloid material designed for making dental impressions for case study models, orthodontic models and opposing models.

Jeltrate Alginate Impression Material is also suitable for use in the fabrication of casts for most removable partial denture frameworks, removable orthodontic and removable occlusal splint appliances, mouthguards and custom trays.

Jeltrate Can

Refill

9 x 454 g Jeltrate Cans

Regular Set
Fast Set

608503
608522



Index

INDIRECT RESTORATION
IMPRESSION TAKING
SILICONES / VPS

Aquasil Ultra

Smart Wetting Impression Material



Product Description

Aquasil Ultra is a Smart Wetting elastomeric impression material with excellent hydrophilic properties, dimensional accuracy, high tear strength and resistance to permanent deformation.

Aquasil Ultra Heavy and Monophase Tray Materials are available in both 360 ml DECA cartridges for automate mixing machines and 50 ml cartridges for manual application.

Aquasil Ultra Light Bodies LV/XLV are available in 50 ml cartridges for manual application as well as digit cartridges for single-use application.

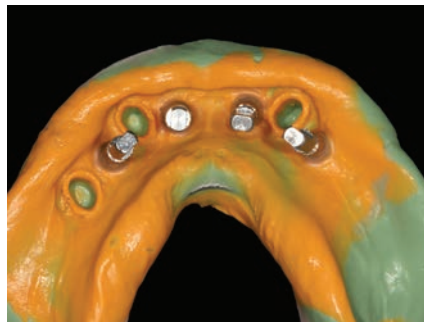
Indications

Aquasil Ultra Smart Wetting Impression Material is indicated for all dental impression techniques.

Features	Benefits
Ultra Accurate	High quality impressions that captures finest detail
Ultra Wettable	Minimize voids and bubbles. Able to capture full sub-gingival margin detail. More reliability for good impression results.
Ultra high tear strength	Intact preparation margins upon mouth removal and casting
Ultra Stable	Minimum distortion over time
Complete system for all impression techniques	Optimized solutions for every clinical requirement



High quality impressions that captures finest detail.



Linking implants and prosthetics (Photo: Prof Dr Gehrke, Germany)



Unique System components, designed to face every challenge.

Aquasil Ultra

Smart Wetting Impression Material

Aquasil Ultra Cartridge

Refill

4 x 50 ml Aquasil Ultra Tray Material in Cartridge

12 x Mixing Tips
1 x Instructions for Use

Monophase, Regular Set
Monophase, Fast Set
Heavy, Regular Set
Heavy, Fast Set

678773
678774
678775
678776



Refill

4 x 50 ml Aquasil Ultra Light Body in Cartridge

24 x Mixing Tips
24 x Intraoral Tips
1 x Instructions for Use

Low Viscosity (LV), Regular Set
Low Viscosity (LV), Fast Set
Extra Low Viscosity (XLV), Regular Set
Extra Low Viscosity (XLV), Fast Set

678779
678780
678781
678882



Aquasil Ultra Cartridge with B4

Refill

4 x 50 ml Aquasil Ultra Light Body in Cartridge

24 x Mixing Tips
24 x Intraoral Tips
1 x 6 ml Bottle B4 Surface Optimizer
1 x Dispensing Well
50 x Flocked Applicator Tips

Low Viscosity (LV), Regular Set
Extra Low Viscosity (XLV), Regular Set
Low Viscosity (LV), Fast Set
Extra Low Viscosity (XLV), Fast Set

678430
678440
678450
678460



Aquasil Ultra

Smart Wetting Impression Material

Aquasil Ultra AutoMix Gun



Refill

1 x AutoMix 50 ml Gun

60578399

Applicator Gun for all 50 ml Cartridges of Aquasil Ultra, Aquasil Bite and Regisil PB

Aquasil Ultra Mixing Tip



Refill

40 x Aquasil Ultra Light Body Mixing Tips

60578121

for LV/XLV in 50 ml Cartridges

Mixing Tip



Refill

48 x Aquasil Ultra Tray Material Mixing Tips

678212

for Monophase/Heavy in 50 ml Cartridges, Aquasil Bite and Regisil

Aquasil Ultra

Smart Wetting Impression Material

Aquasil Ultra Intraoral Tip

Refill

60 x Aquasil Ultra Light Body Intraoral Tips
for LV/XLV in 50 ml Cartridges

60578122



Refill

100 x Aquasil Ultra Intraoral Tips
for Tray Material Monophase/Heavy in 50 ml Cartridges

626382



DECA

Refill

2 x 380 ml Aquasil Ultra Tray Material in DECA Delivery

Monophase, Regular Set

678783

Heavy, Regular Set

678785

Heavy, Fast Set

678787

Putty

60578341



Aquasil Ultra

Smart Wetting Impression Material

DECA Mixing Tip & Bayonet Ring



Refill

40 x Mixing Tips

1 x Bayonet Ring
for Aquasil Ultra Tray Materials in DECA Delivery

for Aquasil Ultra Monophase/Heavy (blue)
for Aquasil Putty DECA (yellow)

60578400
60578340

DECA Bayonet Ring



Refill

2 x Bayonet Rings

for Aquasil Ultra Tray Materials in DECA Delivery

for Aquasil Ultra Monophase/Heavy (blue)
for Aquasil Putty DECA (yellow)

60578401
60578342

digit Target Delivery System



Refill

50 x Aquasil Ultra digit Cartridges

50 x Intraoral Tips

Low Viscosity (LV), Regular Set, Small
Low Viscosity (LV), Regular Set, Large
Low Viscosity (LV), Fast Set, Small
Extra Low Viscosity (XLV), Regular Set, Small
Extra Low Viscosity (XLV), Regular Set, Large
Extra Low Viscosity (XLV), Fast Set, Small

678040
678041
678042
678043
678044
678045

Aquasil Ultra

Smart Wetting Impression Material

digit Dispenser

Refill

2 x digit Syringe Dispenser

678020



digit Mixing Tip

Refill

50 x digit Mixing Tips

678003



digit Intraoral Tip

Refill

50 x digit Intraoral Tips

678006



Aquasil

Very High Viscosity Precision Impression Materials Based on Quadrafunctional Siloxanes

Product Description

Aquasil Soft Putty is a regular setting very high viscosity type impression material with optimum flexibility for easy removal from undercuts and is the ideal tray material for the double mix technique. It may also be used as primary impression material for the putty/wash technique.

Aquasil Hard Putty is a fast setting, very high viscosity type impression material with ideal mechanical properties as tray material for the putty/wash technique. It may also be used as tray material for the double mix technique for quadrant impressions.

Aquasil Can

Standard Pack

1 x 450 ml Catalyst

- 1 x 450 ml Base
- 2 x Spoons
- 1 x Instructions for Use

Soft Putty, Regular Set
Hard Putty, Fast Set

60578320

60578332



Economy Pack

4 x 450 ml Catalyst

- 4 x 450 ml Base
- 2 x Spoons
- 1 x Instructions for Use

Soft Putty, Regular Set
Hard Putty, Fast Set

60578321

60578333



duomix II

Mixing Machine

Product Description

The duomix II is offered in a DENTSPLY partnership with Renfert GmbH. For 80 years, Renfert has provided German quality craftsmanship and small equipment to dental labs. The duomix II dynamic mixing of Aquasil Ultra provides superb consistency of the 5-star impression material. This is the easiest and fastest way of getting the bulk benefits of Aquasil Ultra DECA 380 ml hard cartridges.

- Fastest extrusion speed on the market with an average of 46 mm/sec
- "Turbo-Button" for doubled speed with Aquasil Ultra Monophase and Heavy
- Steady extrusion rate, even for highly viscous materials
- Optimized cartridge bed for even more convenient handling

duomix II Mixing Machine



Complete Unit

1 x duomix II

- 1 x Power Cord
- 1 x Instructions for Use

230 V EU-Version

2761000000

230 V UK-Version

2761002000

120 V US-Version

2761001000

100 V JPN-Version

2761003000

Accessory

1 x duomix II Wall Mounting Kit

2760000100

Fix Adhesive

Tray Adhesive for Alginate Impression Materials

Product Description

Fix Adhesive - Liquid and Fix Adhesive - Spray are solvent based adhesives which increase the adhesion between alginate impression materials and the impression tray surface.

Fix Adhesive Spray



Refill

1 x 200 g Fix Adhesive Aerosol

61601001

Fix Adhesive Bottle



Refill

1 x 30 ml Fix Adhesive Liquid

61601004

Fix Solvent

Cleanser for Removal of Fix Adhesives

Product Description

Fix Solvent is a spray to remove any remaining adhesive from the impression tray after impression taking and casting.

Fix Solvent Spray



Refill

1 x 200 g Fix Solvent Aerosol

61601101

Aquasil Bite

Vinyl Polysiloxane Bite Registration Material

Product Description

Aquasil Bite is designed for accurate interocclusal and jaw relation records. Aquasil Bite offers minimum resistance to closure during 30 seconds working time, minimizing deviation of the mandible producing consistently accurate jaw relation records.

Aquasil Bite accurately records dental morphology, enabling the dentist and lab technician to easily articulate models without interferences from convex tooth surfaces.

The rapid rigidity developed at 1 minute mouth removal time reduces inaccuracies created by mandibular movement during setting and allows accurate model articulation with a minimal amount of distortion producing elastic rebound.

The accurate detail reproduction, minimal distortion and quick set also allows use of Aquasil Bite as a preparation quadrant matrix material in the direct fabrication technique of provisional (temporary) restorations.

Aquasil Bite Cartridge



Refill

2 x 50 ml Aquasil Bite Cartridge
12 x Teal Mixing Tips
1 x Instructions for Use

60578334

Aquasil Bite Conturation Tip



Refill

48 x Aquasil Bite Conturation Tips

60578335

Aquasil Bite

Vinyl Polysiloxane Bite Registration Material

Aquasil Bite Mixing Tip



Refill

48 x Aquasil Ultra Tray Material Mixing Tips
for Monophase/Heavy in 50 ml Cartridges, Aquasil Bite
and Regisil

678212

AutoMix Gun



Refill

1 x AutoMix 50 ml Gun
Applicator Gun for all 50 ml Cartridges of Aquasil Ultra,
Aquasil Bite and Regisil PB

60578399

Index

INDIRECT RESTORATION
PROVISIONAL RESTORATION
TEMPORARY RESTORATION

Integrity®

Temporary Crown & Bridge Material

Product Description

Integrity Temporary Crown and Bridge Material is an automixed two-component material based on multi-functional methacrylic esters, intended for use as both, a short- and long-term temporary crown and bridge material.

Integrity Temporary Crown and Bridge material is compatible with DENTSPLY visible light-cured composites (see IFU of selected composite) for marginal repair and esthetic contouring of temporary crowns.

To simplify delivery and minimize product waste, Integrity Temporary Crown and Bridge Material is packed as cartridge or dual barreled mini-syringe.

Integrity Cartridge



Refill

1 x 76 g Integrity Cartridge

- 16 x Blue Mixing Tips
- 1 x Instructions for Use

- Shade A1
- Shade A2
- Shade A3.5

- 60578345**
- 60578346**
- 60578347**

Integrity Cartridge Mixing Tip



Refill

50 x Integrity Cartridge Mixing Tips

60578349

Integrity®

Temporary Crown & Bridge Material

Integrity Cartridge Dispenser



Refill	
1 x Integrity Cartridge Dispenser with 10:1 Ratio Slide	666260

Integrity Mini-Syringe



Refill	
1 x 15 g Integrity Mini-Syringe 10 x Mixing Tips	
Shade A1	666350
Shade A2	666320
Shade A3.5	666330

Integrity Mini-Syringe Mixing Tip



Refill	
20 x Integrity Mini-Syringe Mixing Tips	666380

Temporary Guttapercha

Product Description

For temporary fillings in cavities not exposed to stresses of mastication and not containing fluid medicaments. Displacement of gum tissue and temporary separation of adjacent teeth.

Temporary Guttapercha Stick



Refill

10 x 28.4 g Guttapercha Sticks

61145006

Integrity® TempGrip®

Temporary Crown & Bridge Cement

Product Description

Integrity TempGrip Temporary Crown & Bridge Cement is a Zinc Oxide Non-Eugenol temporary cement used to lute indirect provisional (temporary) restorations or limited term cementation of final restorations.

The physical properties have been optimized to allow secure retention of restorations, and to allow easy restoration removal and cleanup from the restoration and preparation.

Since retention of the restoration is desired for only a limited time frame, a dentin/enamel adhesive is not recommended for use with Integrity TempGrip Cement.

Integrity TempGrip Cement is an automatically mixed two component material in 1:1 9 g dual barreled syringe based on zinc oxide/organic acids. Due to its non-eugenol formulation, it does not influence the setting of resin-based filling and luting materials.

Integrity TempGrip Syringe



Refill

2 x 9 g Integrity TempGrip Syringe
20 x Mixing Tips, Brown
1 x Instruction for Use
1 x Illustrated Technique Guide

666450

Integrity TempGrip Mixing Tip



Refill

50 x Mixing Tips, Brown

666460

Index

INDIRECT RESTORATION
PERMANENT CEMENTS
SELF-ADHESIVE CEMENTS

SmartCem® 2

Self-Adhesive Cement

Product Description

SmartCem2 Self-Adhesive Cement is a two-component, dual-cure, high strength self-adhesive cement.

SmartCem2 Cement combines esthetic shading with a self-etching adhesive, making it suitable for the permanent cementation of metal, PFM, resin/composite, ceramic and porcelain inlays, onlays, crowns and bridges and endodontic posts without application of a separate dentin/enamel adhesive bonding agent.

Cured SmartCem2 Cement is essentially hydrophobic, minimizing post-cure water sorption, solubility and hygroscopic expansion.

SmartCem2 Syringe



Intro Kit

5 x 5 g SmartCem2 Syringe

669001

Shades: Light, Medium, Dark, Translucent, Opaque
50 x Mixing Tips



Refill

2 x 5 g SmartCem2 Syringe

20 x Mixing Tips

Shade: Light

669012

Shade: Medium

669013

Shade: Dark

669014

Shade: Translucent

669015

Shade: Opaque

669016

Index

INDIRECT RESTORATION
PERMANENT CEMENTS
SELF-ADHESIVE CEMENTS

SmartCem®2

Self-Adhesive Cement

SmartCem2 Mixing Tip



Refill

50 x Mixing Tips

669005

Mixing Tip/Intraoral Tip



Refill

40 x Mixing/Intraoral Tips
for core-X flow, AH Plus Jet, SmartCem2

60620116

Calibra®

Esthetic Resin Cement

Product Description

Calibra Esthetic Resin Cement is a light-cured, dual-cured or self-cured high strength resin cement compatible with numerous dentin/enamel adhesive systems.

It is to be used following the application of a suitable dentin/enamel adhesive to adhesively bond and lute indirect restorations to tooth structure.

Calibra is available as handmix version and in a convenient AutoMix syringe. Five shades provide a full spectrum of esthetic shading possibilities.

Calibra Syringe



Complete Kit

Kit I:

607060

- 5 x 2 g Calibra Syringe Base:
Light, Medium, Dark, Translucent, Opaque
- 2 x 2 g Calibra Syringe Catalyst:
Regular and High Viscosity
- 1 x 4.5 ml Prime&Bond NT Bottle
- 1 x 4.5 ml Self Cure Activator Bottle
- 1 x 3 ml Tooth Conditioner Gel Syringe
- Dental Brush Handle, Brush Tips
- 3 x Well Mixing Trays, Mix Stick, Application Needles
- 1 x Illustrated Technique Guide

Kit II:

- 5 x 1.8 g Calibra Syringe Try-In Paste:
Light, Medium, Dark, Translucent, Opaque
- 1 x 3 ml Calibra Syringe Silane Coupling Agent
- Amber Cover, Mixing Pad, Silane Tips



Operatory Kit

Operatory Kit

607059

- 2 x 2 g Calibra Syringe Base
- 2 x 2 g Calibra Syringe Catalyst
- 1 x 4.5 ml Prime&Bond Bottle
- 1 x 4.5 ml Self Cure Activator Bottle
- 1 x 3 ml Calibra Syringe Silane Coupling Agent
- 3 x Well Mixing Trays, Mix Stick, Silane Tips
- 1 x Illustrated Technique Guide

Index

INDIRECT RESTORATION
PERMANENT CEMENTS
RESIN CEMENTS

Calibra®

Esthetic Resin Cement



Refill

1 x 2 g Calibra Syringe

Base Shade Light	607061
Base Shade Medium	607062
Base Shade Dark	607063
Base Shade Translucent	607064
Base Shade Opaque	607065
Catalyst: Regular Viscosity	607068
Catalyst: High Viscosity	607069

Calibra AutoMix Syringe



Refill

1 x 4.5 g Calibra Automix Syringe

10 x Clear Mixing Tips

Shade Translucent	607084
Shade Light	607081
Shade Medium	607082
Shade Dark	607083
Shade Opaque	607085

Calibra Syringe Mixing Tip



Refill

50 x Clear Mixing Tips

607086

Index

INDIRECT RESTORATION
PERMANENT CEMENTS
RESIN CEMENTS

Calibra®
Esthetic Resin Cement

Silane Coupling Agent



Refill

1 x 3 ml Calibra Syringe Silane Coupling Agent **607080**
25 x Applicator Needles

Visco-gel

Temporary Soft Denture Liner

Product Description

Visco-gel Temporary Soft Denture Liner is a self-curing, resilient methacrylate formulation, intended for use as a limited-term soft lining material for complete and partial dentures.

Visco-gel Bottle

Standard Pack

1 x 120 g Powder

1 x 90 ml Liquid

1 x 15 ml Lubricant

1 x Mixing Bowl

1 x Powder Measure

1 x Liquid Measure

61605002



AH Temp™

Calcium Hydroxide-Based Root Canal Dressing

Product Description

AH Temp root canal dressing is a highly alkaline, calcium hydroxide-based root canal dressing.

AH Temp combines the effective disinfection of root canals with easy handling due to the convenient AH Temp Cannulas.

- The aim of Endodontic Treatments: Effective Disinfection of Root Canals
- Reduced Desiccation
- Excellent Radiopacity enables reliable X-ray Control
- Direct and Precise Application into the Root Canal
- Proven Compatibility with AH Plus

AH Temp Syringe



Kit

4 x 0.75 ml AH Temp Syringe	60620123
20 x AH Temp Cannula	
1 x Finger Grip	
1 x Illustrated Technique Guide	
1 x Instructions for Use	

AH Temp Cannula



Refill

20 x AH Temp Cannula	60620124
-----------------------------	-----------------

AH Temp Accessories



Refill

500 x Disposa-Shield/Hygienic Sleeves	A8801351
--	-----------------

AH Plus® / AH Plus Jet®

Root Canal Sealing Material



Product Description

AH Plus is a two-component paste/paste root canal sealer based on epoxy-amine resin, with the following characteristics:

- Long-term sealing properties
- Outstanding dimensional stability
- Self-adhesive properties
- Very high radiopacity

AH Plus Jet automix syringe delivery is offering the following features:

- Controlled, homogeneous mixing of both pastes
- Direct and precise placement into root canal
- Simple and clean application
- Intraoral tip adjustable to anatomic condition of root canal

Indications

Permanent obturation of root canals of teeth of the secondary dentition in combination with root canal points.

Features	Benefits
High dimensional stability	Excellent sealing properties due to low shrinkage, low solubility and high self-adhesion to dentin.
High biocompatibility	No irritating effects on the periapical tissue. Once set, AH Plus is biologically inert.
Superior radiopacity	Root canal filling is clearly visible in the control X-ray.



Excellent sealing properties.



High radiopacity



Automix and easy intraoral dispensing.

Index

ENDODONTIC PRODUCTS
OBTURATION
SEALERS

AH Plus® / AH Plus Jet®

Root Canal Sealing Material

AH Plus Tube



Refill

- | | |
|--------------------------------------|-----------------|
| 1 x 4 ml AH Plus Tube Paste A | 60620110 |
| 1 x 4 ml AH Plus Tube Paste B | |
| 1 x Mixing Pad | |

AH Plus Jet Syringe



Starter Kit

- | | |
|-------------------------------------|-----------------|
| 1 x 15 g AH Plus Jet Syringe | 60620115 |
| 20 x Mixing/Intraoral Tips | |
| 1 x Mixing Pad | |
| 1 x Illustrated Technique Guide | |
| 1 x Organizer Tray | |



Refill

- | | |
|-------------------------------------|-----------------|
| 2 x 15 g AH Plus Jet Syringe | 60620118 |
|-------------------------------------|-----------------|

Index

ENDODONTIC PRODUCTS
OBTURATION
SEALERS

AH Plus® / AH Plus Jet®

Root Canal Sealing Material

AH Plus Cleaner



Refill

1 x 5 ml AH Plus Cleaner Bottle
2 x Applicator Dish
1 x Instructions for Use

61104277

Mixing Tip/Intraoral Tip



Refill

40 x Mixing/Intraoral Tips
for core-X flow, AH Plus Jet, SmartCem2

60620116

AH 26® / AH 26® silverfree

Root Canal Sealing Material

Product Description

AH 26 powder and resin are mixed to produce a root canal filling material of excellent sealing capacity. As a result of its close adaptation to the root canal walls and its very small contraction during setting, AH 26 allows tightly sealing root canal obturation of excellent tissue compatibility.

AH 26 / AH 26 silverfree Powder & Resin

Standard Pack

1 x 8 g Powder
1 x 10 g Resin

AH 26
AH 26 silverfree (= silverfree powder)

60620101
60621101



AH 26 / AH 26 silverfree Resin

Refill

1 x 10 g AH 26 silverfree Resin

60620002



DENTSPLY® Core & Post System

Adhesive Core Build-Up Kit



Product Description

DENTSPLY Core & Post System is designed to offer a complete dental treatment solution for the placement of core build-ups and endodontic posts. Main feature of this Certified Treatment System (CTS) is the perfect combination of products with proven compatibility.

All system components are made by DENTSPLY and show excellent performance for better dentistry. The organizer tray has been especially designed by dentists for dentists to simplify the complex procedure of adhesive core build-up and post placement. The arrangement of products according to the treatment steps allows a fast and easy procedure:

1. Guttapercha Removal
2. Post Preparation
3. Conditioning of Root Canal
4. Bonding of Post & Canal
5. Post Cementation & Core build-up

Indications

Adhesive Post cementation and core build-up

Features	Benefits
Complete Treatment System	All materials needed for the treatment procedure are provided in a single kit
Certified Treatment System (CTS)	Products with proven compatibility Premium products from a single manufacturer
Clinical validation of all components	Long-term clinical data of components available
Unique organizer tray	Arrangement of products according to clinical treatment sequence High quality packaging Fits into a single drawer



Certified treatment system: products with proven compatibility



X-Post Endodontic Fiber Post



Prime&Bond XP ensures reliable post-placement, with or without light.

DENTSPLY® Core & Post System

Adhesive Core Build-Up Kit

DENTSPLY Core & Post System



Kit

DENTSPLY Core & Post System

60667400

- 1 x Maillefer Largo Peeso Reamer No. 1
- 1 x Maillefer Largo Peeso Reamer No. 2
- 1 x Maillefer Precision Drill No. 1
- 1 x Maillefer Precision Drill No. 2
- 1 x Maillefer Precision Drill No. 3
- 1 x Maillefer Precision Drill No. 4
- 5 x X-post No. 1
- 5 x X-post No. 2
- 3 x X-post No. 3
- 2 x X-post No. 4
- 30 x Paper Points
- 1 x DENTSPLY DeTrey Conditioner 36
- 25 x Applicator Needles for DeTrey Conditioner 36
- 1 x Prime&Bond XP
- 1 x Self Cure Activator
- 1 x CliXdish
- 50 x Root Canal Applicator Tips
- 2 x core-X flow Syringe
- 10 x Mixing/Intraoral Tips for core.X flow
- 1 x Mixing Pad

Root Canal Applicator Tip



Refill

50 x Root Canal Applicator Tips

60667197

DENTSPLY® Endo-Resto System

Combining the Endodontic with the Restorative Therapy

Product Description

The DENTSPLY Endo-Resto System provides all materials necessary to seal the root canal(s) and restore the natural crown in a fast and reliable direct procedure.

Treatment steps:

1. Root Canal Obturation
2. Removal of unset AH Plus
3. Conditioning
4. Bonding and Smart Dentin Replacement

DENTSPLY Endo-Resto System

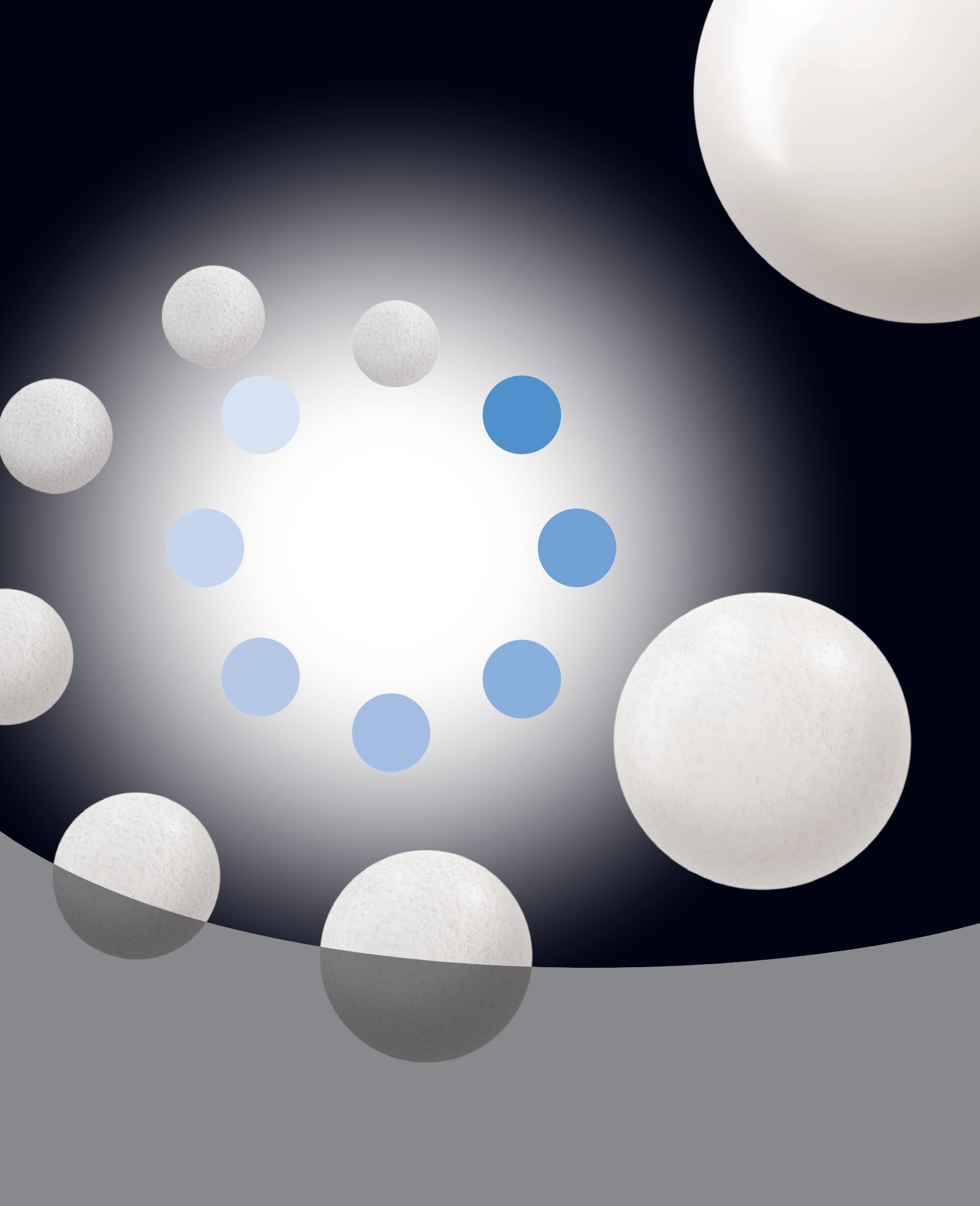


Kit

DENTSPLY Endo-Resto System

61104276

- 1 x 15 g AH Plus Jet Mixing Syringe
- 10 x AH Plus Jet Mixing/Intraoral Tips
- 1 x Mixing Pad
- 1 x 200 Roeko Endo Frost Pellets
- 2 x Applicator Dish
- 1 x 5 ml AH Plus Cleaner Bottle
- 1 x Maillefer Excavator
- 1 x 3 ml DeTrey Conditioner 36
- 25 x Applicator Needles for DeTrey Conditioner 36
- 1 x 2.5 ml Prime&Bond XP
- 1 x CliXdish
- 50 x Applicator Tips
- 1 x Compules Tips Gun
- 15 x SDR Compula Tips
- Instructions For Use



For better dentistry

DENTSPLY