

Catalogue



EN | Solutions for the dental practice



Catalogue **2021**



lling your needs

Zhermack



Zhermack

Progress, constantly. Creating value, to make the quality of the products accessible to the world. With creativity, and especially with the ability to transform every challenge into a development opportunity. To dynamically seize the market trends and understand the needs of partners, clients and customers. To make our solutions accessible worldwide. All this is the basis of Zhermack's growth, and since its foundation, over 35 years ago, the company has never ceased to develop and grow.

The clarity of the dream continues to drive Zhermack along this road, to "make you feel confident in everyday life". This is Zhermack's goal and philosophy of life. And it is a dream that is realised every day. Because everything aims at transmitting confidence. The way is charted with the awareness that Zhermack must contribute to improve oral health throughout the world, now and for future generations.

The contribution of Zhermack to people's oral health stems from the value that is given to the quality of its products. A quality that is born from scientific research and from the commitment to continuous education, to reach and always set new goals that contribute to improve the lives of people all over the world.



«Zhermack is a company that is committed with constancy to creating value, to make the quality of its products accessible worldwide. Zhermack's success resides in its ability to be creative, to transform every challenge into a growth opportunity, and to be dynamic, in order to seize the market trends and understand the needs of partners, clients and end customers».

Paolo Ambrosini
General Manager

Our solutions.

A complete range for the impression taking with a portfolio of products - alginates, condensation silicones, addition silicones - able to adapt to the specific needs of professionals all over the world. Not only products but complete solutions: equipment designed and produced in compliance with clinical processes that systematise and simplify the daily work of professionals with impression materials; the line dedicated to the infection control, specially designed and produced to meet the many needs of the dental practice, and lastly the offers within the scope of dental reconstruction.

We produce measurable results.

Zhermack directly manages all the working stages - from formulation to packaging, from the production of raw materials to the mixing - to produce all its solutions. Validated and controlled processes are the guarantee with which Zhermack is able to offer products that are constant in their characteristics, as well as certified in quality.

This, together with the technological and process integration adopted over time, is what makes Zhermack one of the major producers in the field of dental products.

Quality, certified. Year after year.

Zhermack meets the needs of its customers, maintaining and improving its Quality Management System day after day. Zhermack started its certification process in 1993.

Today the global regulatory framework is very complex and, to simplify access to the global market for its products, Zhermack has taken a big step in 2018: EN ISO 13485:2016 and MDSAP (Medical Device Single Audit Program) certifications.

THE **FULL** RANGE

High-tech,
high-performance
solutions

extra
PRO

Solutions for practitioners looking for high performance. Their distinctive characteristics helps to deliver accurate and reliable impressions.

Solutions for **specific**
applications

special
PRO

Solutions that combine precision and practicality to meet the needs of those working in situations that require special care in application.

ZHERMACK

PRODUCT CHOICE GUIDE

Versatile
solutions

multi
PRO

Solutions whose versatility is their strong point, studied to meet the diverse requirements of daily clinical practice.

Essential
solutions

easy
PRO

Simple and efficacious impression-taking solutions. Above all, satisfaction.





Impression systems 11

Preliminary impression	15
Master impression	29
Transparent matrix	51
Bite registration	55
Relining	65
Accessories	69

Restorative 79

Temporary restorations	81
------------------------	----

Hygiene 85

Instruments and burs	89
Surfaces	93
Special applications	97
Hands	105

Equipment 113

Mixers for impression systems	116
-------------------------------	-----

Model casting 121

NOTE: The images and texts related to the technical data of the individual products and accessories may be changed during the period of validity of the catalogue. The images are only representative of the showed products. Not all products are sold in every country. For further information on product availability, please contact your local representative.





Impression systems

For the last 35 years, Zhermack has been offering innovative solutions for impression taking, by constantly expanding and improving its product range. With the experience of those who directly produce the materials and control all the working phases, to always obtain high quality standards.

Materials for manual mixing and for automatic mixing, able to meet the preferences of the professional according to the technique used and the indications of the specific case. Zhermack's offer also includes gypsum for the different applications and a line of high quality disinfectants that comply with the most recent regulations.

Solutions for impression taking

Impression systems



Preparation of the material

It is important to carefully choose the **impression tray that is most suitable for the clinical case**. It does not matter whether individual (resin) or standard (plastic or metal), just that it is rigid. It is advisable to use an adhesive that ensures perfect adhesion between the impression materials and the impression tray itself. If necessary, also use the most appropriate gingival retraction system.

Zhermack offers a wide range of impression trays adapted to the indication for the specific cases.

- Hi-Tray for impression taking
- Light-curing plates
- Universal Tray Adhesive
- Elite Cord for gingival displacement



Impression taking

The success of an impression is influenced by several factors such as the technique used, the experience and the choice of the most suitable materials according to the clinical case. Zhermack proposes **different solutions such as alginates, condensation silicones and addition silicones**, each with specific characteristics, in order to satisfy the different needs of the dental practice.

- Alginates
- Condensation silicones
- Addition silicones
- Addition silicones for bite registration
- Addition silicones for transparent matrixes



Cleaning and disinfection of the impression

To protect ourselves from cross infection risks, it is necessary to correctly follow the procedures, but also to rely on effective and safe products.

Zeta Hygiene is a complete range of products for **cleaning, disinfection and sterilisation in the dental practice**, characterised by effectiveness, convenience and safety. In particular, in order to obtain a correct disinfection of the impression, Zhermack offers Zeta 7 Spray or Zeta 7 Solution.

- Zeta 7 Spray
- Zeta 7 Solution



Model casting

It often happens that the model needs to be cast directly in the practice to reproduce the state of the patient's dentition for diagnostic purposes.

This allows to assess the most suitable orthodontic treatment or prosthesis, or even only to check the occlusion.

To obtain the maximum precision, you can find within the wide range of **Zhermack gypsum** the one that is the most indicated for the applications of the dental practice.

- Elite Rock
- Elite Model
- Elite Ortho



Impression systems

Preliminary impression

A vast range of alginates, designed for use with an automatic mixer, and an alginate replacement, are the solutions developed by Zhermack for preliminary impressions.

Zhermack alginates meet the most stringent quality standards in terms of both the starting materials used and the solutions proposed. They come in a vast range with distinctive characteristics to satisfy the diverse demands of daily clinical practice: from the different working and setting times (normal, fast and extra-fast) to chromatic variation, from detail reproduction of up to 5 micron to 48- or 120-hour dimensional stability.

All products can be disinfected, as well as being **gluten-** and **lactose-free**, demonstrating the great attention that Zhermack dedicates to both the work of practitioners and the health of patients.

HIGH-TECH, HIGH-PERFORMANCE ALGINATES

Hydrogum 5	16
Hydrocolor 5	17
Pinkalgin 5	18

ALGINATES FOR SPECIAL APPLICATIONS

Orthoprint	19
Neocolloid	20

VERSATILE ALGINATES

Hydrogum	21
Tropicalgin	22

ESSENTIAL ALGINATES

Zetalgin	23
Zetalgin Chromatic	24

ALGinate REPLACEMENT

Freealgin	25
------------------------	----

The product information provided here regarding detail reproduction, dimensional stability, elasticity, tear resistance and time in mouth refers to the Zhermack alginates range.

Hydrogum 5

High-tech, high-performance alginate

Impression systems / Preliminary impression

Hydrogum 5 is a high-performance scannable alginate with 5 µm detail reproduction and 5 days of dimensional stability.

Hydrogum 5 is the Zhermack solution for satisfying the needs of the most demanding practitioners.

Its high precision in detail reproduction, which is similar to that of a silicone, helps to obtain accurate impressions. In addition, its high dimensional stability guarantees impression accuracy for up to 120 hours.

This affords dentists the peace of mind to take an impression on a Friday and to send it to the dental laboratory even the following Tuesday, without worrying about this having a detrimental effect on the result.

As it is scannable, **Hydrogum 5** facilitates access to digital work-flows and improves communications with the dental laboratory, which can directly obtain a digital model (without having to perform the casting phase).

Characteristics

- Detail reproduction up to 5 micron
- 5 days of dimensional stability
- Can be scanned with structured light, structured blue light, blue laser and CBCT scanners without requiring the use of opacifier powders*
- Manual or automatic mixing

Advantages

- **High precision** in detail reproduction for a more satisfactory end result
- **High dimensional stability:** helps maintain impression accuracy for up to 5 days after impression taking
- **Scannability:** facilitates access to digital work-flows and improves communication with the dental technician
- **High elasticity:** allows the material to optimally return to its original form
- **High tear resistance:** reduces the risk of the impression tearing when it is removed from the patient's mouth

*Tests conducted by 3D Fast



Hydrogum 5



Hydrogum 5



Mangustan scent



Hydrocolor 5

High-tech, high-performance alginate



Impression systems / Preliminary impression

Hydrocolor 5 high-performance chromatic alginate with 5 days of dimensional stability.

The 5 days of dimensional stability simplify dentists' daily practice, by allowing them longer to send the impression to the dental technician. Impression accuracy is guaranteed for up to 120 hours.

Characteristics

- Chromatic
- 5 days of dimensional stability
- Manual or automatic mixing

Advantages

- The chromatic variation provides practitioners with a visual guide during the various processing phases: fuchsia during mixing, purple during the working phase and light blue during positioning in the patient's mouth
- **High dimensional stability:** helps maintain impression accuracy for up to 5 days after impression taking
- **High elasticity:** allows the material to optimally return to its original form
- **High tear resistance:** reduces the risk of the impression tearing when it is removed from the patient's mouth



Hydrocolor 5



Hydrocolor 5



Cool berry scent



Pinkalgin 5

High-tech, high-performance alginate

Impression systems / Preliminary impression

Pinkalgin 5 is a fluorescent pink, high-performance, extra-fast alginate with 5 µm detail reproduction and 5 days of dimensional stability.

Pinkalgin 5 is designed for practitioners looking for a high-quality solution with attractive characteristics. Its eye-catching fluorescent pink colour meets with the approval of dental assistants and those dentists that are fond of the most feminine of all colours.

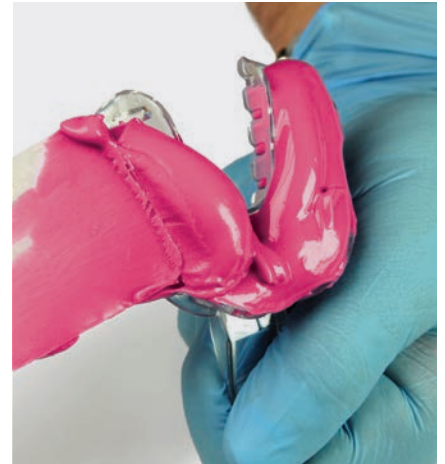
With a time in mouth of just 45 seconds, **Pinkalgin 5** is the Zhermack alginate for professionals who prefer a short time in mouth, which also guarantees better patient comfort.

Characteristics

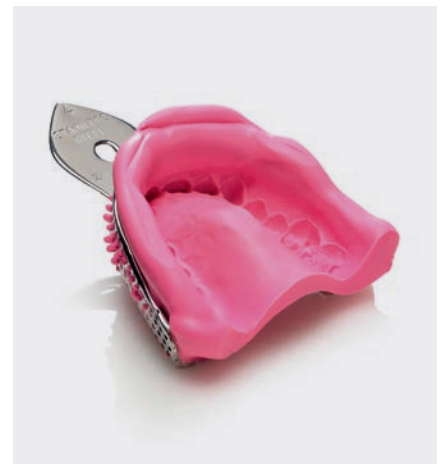
- Fluorescent pink colour
- Detail reproduction up to 5 micron
- 5 days of dimensional stability
- Time in mouth of 45 seconds

Advantages

- Eye-catching colour chosen for practitioners seeking quality and attractive aesthetic characteristics
- **Short time in mouth** for greater patient comfort
- **High precision** in surface detail reproduction for a more satisfactory end result
- **High dimensional stability:** helps maintain impression accuracy for up to 5 days after impression taking
- **High elasticity:** allows the material to optimally return to its original form
- **High tear resistance:** reduces the risk of the impression tearing when it is removed from the patient's mouth



Pinkalgin 5



Pinkalgin 5



Raspberry scent





Orthoprint is an extra-fast alginate with a vanilla scent that is recommended for orthodontic use.

The limited time in mouth, which is well-tolerated by patients*, combined with its vanilla scent that is pleasant for children**, are the distinctive characteristics that make it the recommended solution for orthodontists and children's dentists.

Recommended for orthodontics by 97% of users*

Characteristics

- Time in mouth of 45 seconds

Advantages

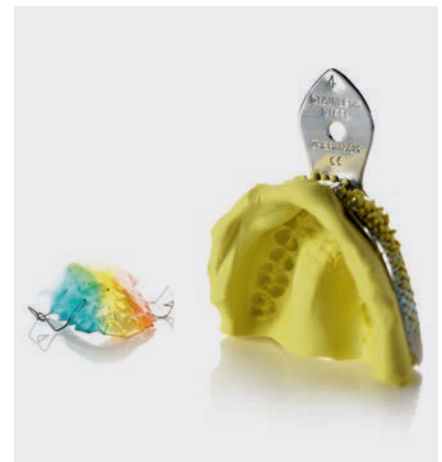
- **Short time in mouth:** the 45-second time in mouth make it well tolerated by patients*
- **Vanilla scent:** pleasant for paediatric patients**
- **High elasticity:** allows the material to optimally return to its original form after the deformation that takes place when the impression is removed from the patient's mouth and thereby contributes to maintaining its accuracy
- **High tear resistance:** helps to reduce the risk of the impression tearing when it is removed from the patient's mouth

*Key-Stone Italia survey, 2019

**Zhermack Italy and Germany survey, 2019



Orthoprint



Orthoprint



Vanilla scent



Neocolloid

Alginate for special applications

Impression systems / Preliminary impression

Neocolloid is an alginate with an extended time in mouth recommended for removable prostheses.

Its specific characteristics make Neocolloid the ideal choice for dentists specialising in removable prostheses. The extended time in mouth allows dentists to reproduce the soft tissues with absolute peace of mind*.

Recommended for removable prostheses by 95% of users*

Characteristics

- Time in mouth of 1 minute and 30 seconds
- Low viscosity

Advantages

- **Extended time in mouth:** the time in mouth of 1 minute and 30 seconds is ideal for reproducing the soft tissues, making this the go-to product for removable prostheses*
- **Low viscosity:** to satisfy the needs of practitioners who prefer low-viscosity products
- **High elasticity:** allows the material to optimally return to its original form after the deformation that takes place when the impression is removed from the patient's mouth

*Key-Stone Italia survey, 2019



Neocolloid



Neocolloid



Spear-mint scent





Tropicalgin is a chromatic alginate for versatile use.

The chromatic variation provides the practitioner with a visual guide when processing the material for impression taking. It is available in Fast and Extra-Fast Setting Time versions to satisfy the diverse requirements of professional dentists.

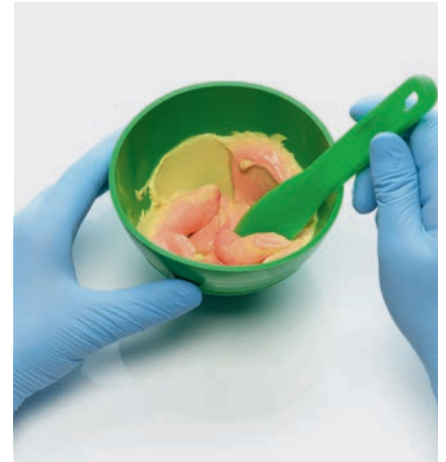
Characteristics

- Chromatic

Advantages

- The chromatic variation provides practitioners with a visual guide during the various processing phases: red during mixing, orange during the working phase and yellow during positioning in the patient's mouth
- **Different setting times (Fast/Extra Fast)*:** to satisfy different dentists' requirements
- Its characteristic scent favours patient comfort

* Products not available on all markets



Tropicalgin



Tropicalgin



Mango scent



Hydrogum is an historical alginate for versatile use.

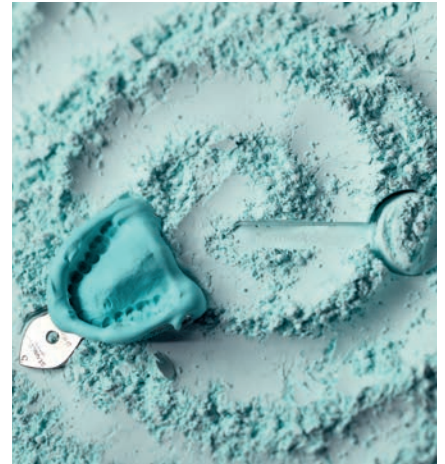
Used in dental practices for over 20 years, **Hydrogum** was one of Zhermack's first alginates and is still one of the most popular in over 50 countries. This elastic and versatile alginate satisfies the many demands of daily clinical practice, whilst guaranteeing satisfactory results.

Characteristics

- High tear resistance
- Elasticity

Advantages

- **High tear resistance:** helps to reduce the risk of the impression tearing when it is removed from the patient's mouth
- **Elasticity:** allows the material to optimally return to its original form after the deformation that takes place when the impression is removed from the patient's mouth



Hydrogum



Hydrogum



Mint scent





Zetalgin is an essential alginate with a mint scent and guaranteed Zhermack quality.

It is ideal for practitioners looking for a simple and efficacious impression-taking solution.

Characteristics

- Essential alginate

Advantages

- Quality guaranteed by ISO standards*
- Scented for better patient comfort

* ISO 21563:2013



Zetalgin



Zetalgin



Mint scent



Zetalgin Chromatic

Essential alginate

Impression systems / Preliminary impression

Zetalgin is an essential chromatic alginate with a mint scent and guaranteed Zhermack quality.

It is ideal for practitioners looking for a simple and efficacious chromatic impression-taking solution.

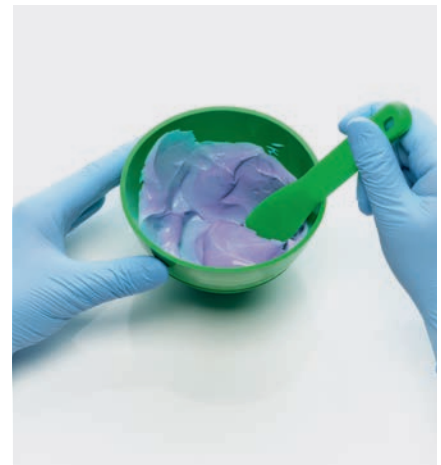
Characteristics

- Chromatic: it changes colour during the three processing phases (mixing, working, positioning)

Advantages

- Quality guaranteed by ISO standards*
- The chromatic variation provides practitioners with a visual guide during the various processing phases: purple during mixing, grey during the working phase and green during positioning in the patient's mouth
- Scented for better patient comfort

* ISO 21563:2013



Zetalgin Chromatic



Zetalgin Chromatic



Mint scent





Freealgin is a medium viscosity addition silicone, used in substitution of traditional alginates for preliminary impression taking.

One of its advantages is its high dimensional stability (superior to alginates), which ensures flexibility in the impression casting times and greater accuracy. Greater elasticity, a better recovery from deformation and a higher tear resistance also complement its characteristics. For automatic mixing, the packaging is also available in a 5:1 ratio, which is quick and convenient.



Freealgin

Characteristics

- 1:1 and 5:1 mixing ratio
- Thixotropy
- Biocompatibility
- Mangosteen scent

Advantages

- High tear resistance
- Excellent recovery from deformation
- High dimensional stability

Preliminary impression

Impression systems / Preliminary impression



Preliminary impression

Product characteristics



Impression systems / Preliminary impression

Product	Type of setting	Working time (including mixing time) (min:s)	Time in mouth (min:s)	Setting time (min:s)	Scent	Compression strains (%)	Elastic recovery (%)	Tear resistance (N / mm)
Hydrogum 5	Extra Fast	1:05	0:45	1:50	Mangustan	13.0	97	0.75
Hydrocolor 5	Fast	1:10	1:00	2:10	Cool berry	14.0	97	0.70
Pinkalgin 5	Extra Fast	1:05	0:45	1:50	Raspberry	13.5	97	0.70
Orthoprint	Extra Fast	1:05	0:45	1:50	Vanilla	13.5	96.5	0.75
Neocolloid	Normal	2:00	1:30	3:30	Spearmint	13.5	97	0.65
Tropicalgin	Fast	1:35	1:00	2:35	Mango	11.5	96.5	0.65
Tropicalgin	Extra Fast	1:15	0:25	1:40	Mango	11.5	96.5	0.65
Hydrogum	Fast	1:10	1:00	2:10	Mint	13.0	96	0.80
Zetalgin	Fast	1:35	1:00	2:35	Mint	10	96	0.65
Zetalgin Chromatic	Fast	1:10	1:00	2:10	Mint	10	96	0.65

* Clinical use times are intended as from the start of mixing with deionised water at 23°C / 73°F.

Product	Type of setting	Working time (including mixing time) (min:s)	Time in mouth (min:s)	Setting time (min:s)	Scent	ISO 4823	Elastic recovery (%)	Linear dimen- sional change 24 h (%)	Hardness (Shore A)
Freealgin	Fast	1:00	2:00	3:00	Mangustan	Type 2 Medium-bodied Consistency	99	0.25	50

**The above times should be considered as from the start of mixing, at 23°C / 73°F

Preliminary impression

Codes

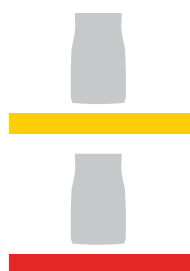
Impression systems / Preliminary impression



High-tech, high-performance alginates

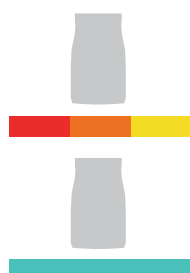
Code	Product	Setting time	Pack type
C302070	Hydrogum 5	Extra Fast Set	1 x 453 g bag
C302071	Hydrogum 5	Extra Fast Set	1 tub + 2 x 453 g bags + measuring spoons set
C302075	Hydrogum 5	Extra Fast Set	1 x 21 g single-dose bag
C302120	Hydrocolor 5	Fast Set	1 x 453 g bag
C302130	Hydrocolor 5	Fast Set	1 x 21 g single-dose bag
C302140	Pinkalgin 5	Extra Fast Set	1 x 453 g bag

FUCSIA during mixing | PURPLE during the working phase | LIGHT BLUE during positioning of the material in the patient's mouth



Alginates for special applications

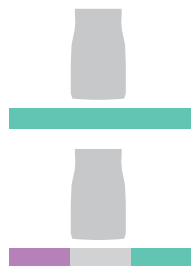
Code	Product	Setting time	Pack type
C302145	Orthoprint	Extra Fast Set	1 x 500 g bag
C302161	Orthoprint	Extra Fast Set	1 tub + 2 x 500 g bags + measuring spoons set
C302171	Orthoprint	Extra Fast Set	1 x 18 g single-dose bag
C302205	Neocolloid	Normal Set	1 x 500 g bag
C302230	Neocolloid	Normal Set	1 x 18 g single-dose bag



Versatile alginates

Code	Product	Setting time	Pack type
C302240	Tropicalgin	Fast Set	1 x 453 g bag
C302244	Tropicalgin	Extra Fast Set	1 x 453 g bag
C302242	Tropicalgin	Fast Set	1 tub + 2 x 453 g bags + measuring spoons set
C302245	Tropicalgin	Fast Set	1 x 18 g single-dose bag
C302025	Hydrogum	Fast Set	1 x 500 g bag
C302051	Hydrogum	Fast Set	1 x 18 g single-dose bag

RED during mixing | ORANGE during the working phase | YELLOW during positioning of the material in the patient's mouth



Essential alginates

Code	Product	Setting time	Pack type
C301001	Zetalgin	Fast Set	1 x 453 g bag
C301004	Zetalgin Chromatic	Fast Set	1 x 453 g bag

PURPLE during mixing | GREY during the working phase | GREEN during positioning of the material in the patient's mouth

Zhermack recommends using alginates with:



MX-300 automatic alginate mixer.



Alginate replacement

Code	Product	Setting time	Pack type
C300110	Freealgin	Fast Set	Standard Pack: 2 x 50 ml cartridges (Base + Catalyst) + 4 purple mixing tips

Preliminary impression

Impression systems / Preliminary impression



Preliminary impression

Accessories



Impression systems / Preliminary impression

C300900



Measuring spoons set for 5-day alginates

C300910



Measuring spoons set for 48-hour alginates

C300992



Rubber bowl

C300990



Fluorescent alginate spatulas (6 pcs)

C300960



Long Life Bag, 1 pack contains 100 pcs (impression storage bags with airtight seal)

C400435



Algitray 1 kg

C205501



Lilac mixing tips

C202100



D2 1:1 dispenser





Impression systems

Master impression

Knowledge, technique, high quality materials. In other words, the optimal impression. The right one, which meets the dentist's requirements. Addition or condensation silicones, to obtain an accurate and precise impression, with a long dimensional stability (especially for A-Silicones) and high tear resistance.

On the basis of the clinical situation, the dentist can choose materials with a longer or shorter working time. Furthermore, Zhermack silicones are biocompatible and characterized by pleasing scents, to ensure a greater comfort to patients.

ADDITION SILICONES

Hydrorise System	34
Elite HD+	38
Elite P&P	42

CONDENSATION SILICONES

Zetaplus	48
Oranwash	48
Indurent Gel	48

Hydrorise System

Addition silicones

Impression systems / Master impression

Hydrorise System is a range of high-performance addition silicones for impressions of implants and natural abutments. Formulated for professionals seeking excellent technical characteristics, Hydrorise System is the top of the Zhermack range and offers an extensive range of solutions for different clinical situations.

The unique characteristics of Hydrorise System help users achieve precise and accurate impressions. Accuracy is the shared objective of the Hydrorise System's two key components: Hydrorise Implant and Hydrorise.

Hydrorise Implant is a scannable silicone with high rigidity, formulated for implant prosthodontics.

Hydrorise is a highly hydrocompatible silicone that achieves an accuracy of 5 microns in detail reproduction.

Characteristics

- At least 99%* elastic recovery*
- Dimensional stability for up to 21 days
- Tear resistance
- Biocompatible even on damaged mucosa

Hydrorise Implant

- High final hardness
- Scannable even without reflective sprays
- Radiopacity

Hydrorise

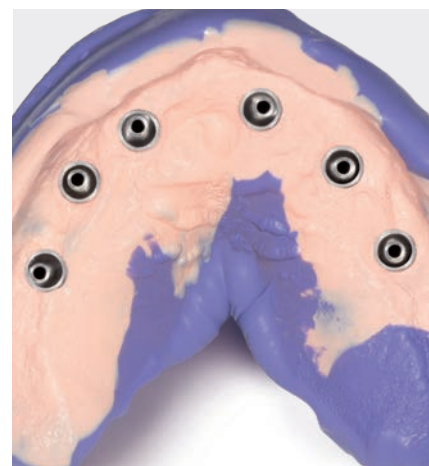
- 5 micron detail reproduction
- High hydrocompatibility
- One of the best contact angles on the market**

Advantages

- **Accurate and reliable impressions:** elastic recovery of nearly 100% and tear resistance help maintain the impression's accuracy even after its removal from the oral cavity.
- **Accuracy over time:** the product's dimensional stability helps maintain impression accuracy for up to 21 days.
- **Patient safety:** biocompatibility even on damaged mucosa reduces the risk of irritating or sensitising the mucosae and oral tissues.
- **Ideal combination of rigidity and elasticity:** Hydrorise Implant has the high rigidity needed to stabilise three-dimensional transfer within the oral cavity and enough elasticity to ensure easy removal of the impression from the oral cavity.
- **Safety for the patient and the professional:** Hydrorise Implant's radiopacity allows the dentist to identify subgingival material residues with a simple X-ray performed in the dental practice.
- **Access to digital workflow:** Hydrorise Implant can be scanned without the use of reflective sprays. Scannability facilitates access to digital workflow.
- **High precision:** Hydrorise fluids achieve 5 micron detail reproduction, are highly hydrocompatible, and have one of the best contact angles on the market.



Hydrorise Implant Medium Quick Set



Hydrorise Implant Heavy - Light Body



Hydrorise Putty - Light



* 99% for Hydrorise Putty and Maxi Putty; 99.5% for all other viscosities of Hydrorise System

**In-house comparative tests against some of the best-known impression materials on the market.



Hydrorise System	Delivery System	Recommended technique	Type of setting	Working time (including mixing time)*	Time in mouth**	Setting time*
Hydrorise Putty	Manual mixing or 5:1 automatic mixing	Double step impression	Normal Set	2:00	3:30	5:30
		Single step impression	Fast Set	1:30	2:30	4:00
Hydrorise Implant Heavy Body	5:1 automatic mixing	Single step impression	Normal Set	2:00	3:30	5:30
Hydrorise Heavy Body	1:1 semi-automatic mixing or 5:1 automatic mixing	Double step impression	Normal Set	2:00	3:30	5:00
		Single step impression	Fast Set	1:30	2:30	3:30
Hydrorise Implant Medium Body	5:1 automatic mixing	Monophase impression	Normal Set	2:00	3:30	5:30
			Quick Set	1:30	2:00	3:30
Hydrorise Monophase	1:1 semi-automatic mixing or 5:1 automatic mixing	Monophase impression	Normal Set	2:00	3:30	6:00
			Fast Set	1:30	2:30	4:30
Hydrorise Regular Body	1:1 semi-automatic mixing	Single step impression	Normal Set	2:00	3:30	5:30
			Fast Set	1:30	2:30	4:00
Hydrorise Implant Light Body	1:1 semi-automatic mixing	Single step impression	Normal Set	2:00	3:30	5:30
Hydrorise Light Body	1:1 semi-automatic mixing	Double step impression	Normal Set	2:00	3:30	5:30
		Single step impression	Fast Set	1:30	2:30	4:00
Hydrorise Extra Light Body	1:1 semi-automatic mixing	Double step impression	Normal Set	2:00	3:30	5:30
			Fast Set	1:30	2:30	4:00

* Times are intended from the beginning of mixing at 23°C (73 °F). Higher temperatures shorten setting times, lower temperatures extend them.

** Time in mouth is intended at 35°C / 95°F.

Hydrorise System	ISO 4823	Elastic recovery	Linear dimensional change (after 24 h)	Hardness (Shore A)	Shelf-life
Hydrorise Putty	Type 0 Putty Consistency	> 99.0 %	< 0.20 %	45 ± 2	3 years
Hydrorise Maxi Putty	Type 0 Putty Consistency	> 99.0 %	< 0.20 %	60 ± 2	3 years
Hydrorise Implant Heavy Body	Type 1 Heavy-bodied Consistency	> 99.5 %	< 0.20 %	65	3 years
Hydrorise Heavy Body	Type 1 Heavy-bodied Consistency	> 99.5 %	< 0.20 %	60 ± 2	3 years
Hydrorise Maxi Heavy Body	Type 1 Heavy-bodied Consistency	> 99.5 %	< 0.20 %	60 ± 2	3 years
Hydrorise Implant Medium Body	Type 2 Medium-bodied Consistency	> 99.5 %	< 0.20 %	60	3 years
Hydrorise Monophase	Type 2 Medium-bodied Consistency	> 99.5 %	< 0.20 %	54 ± 2	3 years
Hydrorise Maxi Monophase	Type 2 Medium-bodied Consistency	> 99.5 %	< 0.20 %	54 ± 2	3 years
Hydrorise Regular Body	Type 2 Medium-bodied Consistency	> 99.5 %	< 0.20 %	45 ± 2	3 years
Hydrorise Implant Light Body	Type 3 Light-bodied Consistency	> 99.5 %	< 0.20 %	55	3 years
Hydrorise Light Body	Type 3 Light-bodied Consistency	> 99.5 %	< 0.20 %	45 ± 2	3 years
Hydrorise Extra Light Body	Type 3 Light-bodied Consistency	> 99.5 %	< 0.20 %	45 ± 2	3 years



Hydrorise Putty - High viscosity addition silicone



Code	Setting time	Pack type
C207010	Normal Set	2 x 300 ml tubs (Base + Catalyst) + 2 measuring spoons
C207011	Fast Set	
C207012	Normal Set	Eco Pack: 2 x 900 ml tubs (Base + Catalyst) + 2 measuring spoons
C207013	Fast Set	
C207071	Fast Set	Trial Kit: 2 x 100 ml tubs (Base + Catalyst) of Putty Fast + 2 measuring spoons 1 x 50 ml cartridge (Base + Catalyst) of Light Fast + 6 yellow mixing tips

Hydrorise Maxi Putty - High viscosity addition silicone



5:1

Code	Setting time	Pack type
C207044	Normal Set	2 x 380 ml cartridges (Base + Catalyst) + 15 dynamic-static mixing tips + 2 tip lockers
C207045	Fast Set	
C207064	Normal Set	Eco Pack: 6 x 380 ml cartridges (Base + Catalyst) + 2 tip lockers
C207065	Fast Set	

Hydrorise Implant Heavy Body - High viscosity addition silicone



5:1

Code	Setting time	Pack type
C207090	Normal Set	2 x 380 ml cartridges (Base + Catalyst) + 15 dynamic-static mixing tips + 2 tip lockers
C207095	Normal Set	Hydrorise Implant Kit Heavy/Light: 1 x 380 ml cartridge (Base + Catalyst) of Heavy Body + 1 x 50 ml cartridge (Base + Catalyst) of Light Body + 6 dynamic-static mixing tips + 6 yellow mixing tips + 1 tip locker

Hydrorise Heavy Body - High viscosity addition silicone



Code	Setting time	Pack type
C207008	Normal Set	2 x 50 ml cartridges (Base + Catalyst) + 6 green mixing tips
C207009	Fast Set	
C207077	Normal Set	Trial Kit: 1 x 50 ml cartridge (Base + Catalyst) of Heavy Body Fast + 1 x 50 ml cartridge (Base + Catalyst) of Light Body Fast + 6 yellow mixing tips + 3 green mixing tips

Hydrorise Maxi Heavy Body - High viscosity addition silicone



5:1

Code	Setting time	Pack type
C207042	Normal Set	2 x 380 ml cartridges (Base + Catalyst) + 15 dynamic-static mixing tips + 2 tip lockers
C207043	Fast Set	
C207062	Normal Set	Eco Pack: 6 x 380 ml cartridges (Base + Catalyst) + 2 tip lockers
C207063	Fast Set	



Hydrorise Implant Medium Body - Medium viscosity addition silicone

Code	Setting time	Pack type
C207092	Normal Set	2 x 380 ml cartridges (Base + Catalyst) + 15 dynamic-static mixing tips + 2 tip lockers
C207096	Quick Set	1 x 380 ml cartridge (Base + Catalyst) + 6 dynamic-static mixing tips + 1 tip lockers



Hydrorise Monophase - Medium viscosity addition silicones

Code	Setting time	Pack type
C207006	Normal Set	2 x 50 ml cartridges (Base + Catalyst) + 6 pink mixing tips
C207007	Fast Set	



5:1

Hydrorise Maxi Monophase - Medium viscosity addition silicones

Code	Setting time	Pack type
C207040	Normal Set	2 x 380 ml cartridges (Base + Catalyst) + 15 dynamic-static mixing tips + 2 tip lockers
C207041	Fast Set	
C207061	Fast Set	Eco Pack: 6 x 380 ml cartridges (Base + Catalyst) + 2 tip lockers



Hydrorise Regular Body - Medium viscosity addition silicone

Code	Setting time	Pack type
C207004	Normal Set	2 x 50 ml cartridges (Base + Catalyst) + 12 pink mixing tips
C207005	Fast Set	



Hydrorise Implant Light Body - Low viscosity addition silicone

Code	Setting time	Pack type
C207091	Normal Set	2 x 50 ml cartridges (Base + Catalyst) + 12 yellow mixing tips
C207095	Normal Set	Hydrorise Implant Kit Heavy/Light: 1 x 380 ml cartridge Heavy Body + 1 x 50 ml cartridge of Light Body + 6 dynamic-static mixing tips + 6 yellow mixing tips + 1 tip locker



Hydrorise Light Body - Low viscosity addition silicone

Code	Setting time	Pack type
C207000	Normal Set	2 x 50 ml cartridges (Base + Catalyst) + 12 yellow mixing tips
C207001	Fast Set	
C207071	Fast Set	Trial Kit: 2 x 100 ml tubs (Base + Catalyst) of Putty Fast + 2 measuring spoons + 1 x 50 ml cartridge (Base + Catalyst) of Light Fast + 6 yellow mixing tips
C207077	Fast Set	Trial Kit: 1 x 50 ml cartridge (Base + Catalyst) of Heavy Fast + 1 x 50 ml cartridge (Base + Catalyst) of Light Fast + 6 yellow mixing tips + 3 green mixing tips



Hydrorise Extra Light Body - Low viscosity addition silicone

Code	Setting time	Pack type
C207002	Normal Set	2 x 50 ml cartridges (Base + Catalyst) + 12 yellow mixing tips
C207003	Fast Set	



We recommend the use of Sympress for the automatic mixing of 5:1 systems.
See page 110 for more details.

5:1 Packaged in the system for automatic mixing in 5:1 ratio

Elite HD+ was Zhermack's first addition silicone range. For over 25 years, it has met the most diverse clinical demands of practitioners the world over, by virtue of its great versatility.

Elite HD+ boasts a broad array of impression-taking solutions from which practitioners can choose according to their personal clinical practice. It features a complete range of viscosities for the diverse clinical indications, depending on the technique used (double step, simultaneous with two viscosities or monophasic); pack types suitable for all types of mixing (manual, semi-automatic or automatic) and normal or fast setting times, to satisfy all personal preferences.

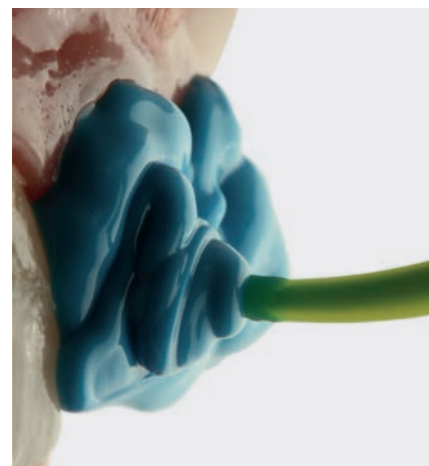
In addition to its great versatility, Elite HD+ has the characteristics that professionals need - a combination of hydrocompatibility and thixotropy; tear resistance and elastic recovery - for an accurate impression.

Characteristics

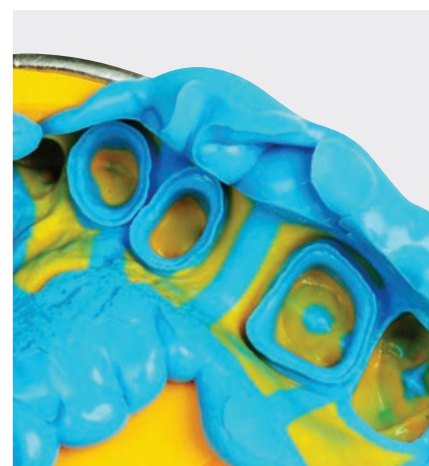
- Hydrocompatibility of the fluids
- Thixotropy
- Tear resistance
- At least 99% elastic recovery
- Dimensional stability for up to 15 days
- Biocompatible even on damaged mucosae
- Colour contrast

Advantages

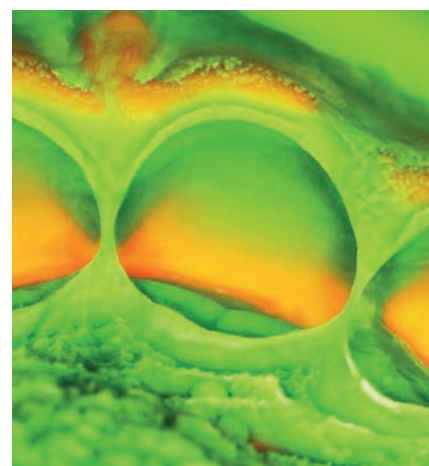
- **Application versatility:** the range features 6 different consistencies and 4 different pack types (tubs, tubes, and 1:1 and 5:1 cartridges)
- **Impression accuracy and precision:** the hydrocompatibility of the washes helps practitioners obtain high-quality impressions
- **Impression accuracy and reliability,** due to its tear resistance and elastic recovery
- **Dimensional stability** even after disinfection
- **Visual comfort:** the colour contrast of the materials with different viscosities facilitates impression interpretation
- **Safety for both patient and practitioner:** products can be disinfected using disinfectants containing quaternary aluminium salts, mixtures of alcohol and surface tension reducers, whilst maintaining their characteristics of accuracy and dimensional stability even after disinfection



Elite HD+ Light Body Normal Set



Elite HD+ Putty - Light Body Normal Set



Elite HD+ Putty - Light Body Fast Set





Product	Delivery system	Recommended technique	Type of setting	Working time, including mixing time* (min:s)	Time in mouth** (min:s)	Setting time* (min:s)
Elite HD+ Putty Soft	Manual mixing or 5:1 automatic mixing	Double step impression	Normal Set	2:00	3:30	5:30
		Simultaneous impression	Fast Set	1:30	2:30	4:00
Elite HD+ Tray Material	1:1 dispenser gun or 5:1 automatic mixing	Double step impression Simultaneous impression	Fast Set	1:30	2:30	4:00
Elite HD+ Monophase	1:1 dispenser gun or 5:1 automatic mixing	Monophase	Normal Set	2:00	3:30	5:30
Elite HD+ Regular Body	1:1 dispenser gun or Manual mixing	Simultaneous impression	Normal Set	2:00	3:30	5:30
Elite HD+ Light Body	Manual mixing or 1:1 dispenser gun	Simultaneous impression	Normal Set	2:00	3:30	5:30
	1:1 dispenser gun	Double step impression	Fast Set	1:30	2:30	4:00
Elite HD+ Super Light Body	1:1 dispenser gun	Double step impression	Fast Set	1:30	2:30	4:00

*These times are intended from the start of mixing at 23°C/73°F. Higher temperatures reduce these times, lower temperatures extend them.

** The time in mouth is intended as at 35°C / 95°F

Product	ISO 4823	Elastic recovery	Linear dimensional change (after 24 h)	Hardness (Shore A)	Shelf-life
Elite HD+ Putty Soft	Type 0 Putty Consistency	> 99%	< 0,20 %	60 ± 2	3 years
Elite HD+ Tray Material	Type 1 Heavy-Bodied Consistency	> 99%	< 0,20 %	60 ± 2	3 years
Elite HD+ Tray Material Maxi	Type 1 Heavy-Bodied Consistency	> 99,5 %	< 0,20 %	60 ± 2	3 years
Elite HD+ Monophase	Type 2 Medium-Bodied Consistency	> 99,5 %	< 0,20 %	54 ± 2	3 years
Elite HD+ Monophase Maxi	Type 2 Medium-Bodied Consistency	> 99,5 %	< 0,20 %	54 ± 2	3 years
Elite HD+ Regular Body	Type 2 Medium-Bodied Consistency	> 99,5 %	< 0,20 %	45 ± 2	3 years
Elite HD+ Light Body	Type 3 Light-Bodied Consistency	> 99,5 %	< 0,20 %	45 ± 2	3 years
Elite HD+ Super Light Body	Type 3 Light-Bodied Consistency	> 99,5 %	< 0,20 %	45 ± 2	3 years



Elite HD+ Putty Soft - High viscosity addition silicone

Code	Setting time	Pack type
C203000	Normal Set	2 x 250 ml (Base + Catalyst) tubs + 2 measuring spoons
C203010	Fast Set	
C203002	Normal Set	4 x 450 ml (Base + Catalyst) tubs + 2 measuring spoons
C203012	Fast Set	
C203100	Normal Set	Intro Kit: 2 x 250 ml (Base + Catalyst) tubs Putty Soft Normal, 1 x 50 ml Light Normal, 1 x 50 ml Regular Normal + 12 yellow mixing tips + 6 yellow oral tips + 1 D2 1:1 Dispenser + 2 measuring spoons



NORMAL FAST

Elite HD+ Maxi Putty Soft - High viscosity addition silicone

Code	Setting time	Pack type
C202340	Normal Set	2 x 380 ml cartridges (Base + Catalyst) + 15 dynamic-static mixing tips + 2 tip locks
C202360	Fast Set	
C202350	Normal Set	6 x 380 ml cartridges (Base + Catalyst) + 2 tip locks
C202370	Fast Set	



NORMAL 5:1 FAST

Elite HD+ Tray Material - High viscosity addition silicone

Code	Setting time	Pack type
C202032	Fast Set	2 x 50 ml cartridges (Base + Catalyst) + 6 green mixing tips



Elite HD+ Maxi Tray Material - High viscosity addition silicone

Code	Setting time	Pack type
C202320	Fast Set	2 x 380 ml cartridges (Base + Catalyst) + 15 dynamic-static mixing tips + 2 tip locks
C202330	Fast Set	6 x 380 ml cartridges (Base + Catalyst) + 2 tip locks

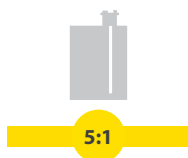


5:1

Elite HD+ Monophase - Medium viscosity addition silicones

Code	Setting time	Pack type
C202020	Normal Set	2 x 50 ml cartridges (Base + Catalyst) + 12 yellow mixing tips





Elite HD+ Maxi Monophase - Medium viscosity addition silicone

Code	Setting time	Pack type
C202300	Normal Set	2 x 380 ml cartridges (Base + Catalyst) + 15 dynamic-static mixing tips + 2 tip locks
C202310	Normal Set	6 x 380 ml cartridges (Base + Catalyst) + 2 tip locks



Elite HD+ Regular Body - Medium viscosity addition silicones

Code	Setting time	Pack type
C203020	Normal Set	2 x 50 ml cartridges (Base + Catalyst) + 12 yellow mixing tips
C203025	Normal Set	2 x 90 ml tubes (Base + Catalyst)
C203100	Normal Set	Intro Kit: 2 x 250 ml (Base + Catalyst) tubs Putty Soft Normal, 1 x 50 ml Light Normal, 1 x 50 ml Regular Normal + 12 yellow mixing tips + 6 oral tips + 1 D2 1:1 dispenser + 2 measuring spoons



Elite HD+ Light Body - Low viscosity addition silicone

Code	Setting time	Pack type
C203030	Normal Set	2 x 50 ml cartridges (Base + Catalyst) + 12 yellow mixing tips
C203035	Normal Set	2 x 90 ml tubes (Base + Catalyst)
C203100	Normal Set	Intro Kit: 2 x 250 ml (Base + Catalyst) tubs Putty Soft Normal, 1 x 50 ml Light Normal, 1 x 50 ml Regular Normal + 12 yellow mixing tips + 6 oral tips + 1 D2 1:1 dispenser + 2 measuring spoons



Elite HD+ Light Body - Low viscosity addition silicone

Code	Setting time	Pack type
C203040	Fast Set	2 x 50 ml cartridges (Base + Catalyst) + 12 yellow mixing tips



Elite HD+ Super Light Body - Low viscosity addition silicone

Code	Setting time	Pack type
C203050	Fast Set	2 x 50 ml cartridges (Base + Catalyst) + 12 yellow mixing tips



We recommend using Sympress for 5:1 automatic mixing
For further information, see page 110

5:1 Packed in the automatic mixing system in a 5:1 ratio

Elite P&P is Zhermack's essential range of addition silicones for impression taking.

The range simplicity that distinguishes Elite P&P is perfectly complemented by the quality of the materials used. Elite P&P is therefore technically effective and reliable according to the high quality standards associated with Zhermack products all over the world.

Elite P&P silicones come in three different viscosities (Putty, Regular and Light) offering *normal* or *fast* setting times to satisfy different clinical needs and use preferences.

Elite P&P is recommended for dental practitioners approaching the world of addition silicones and seeking an effective product from a reliable brand.



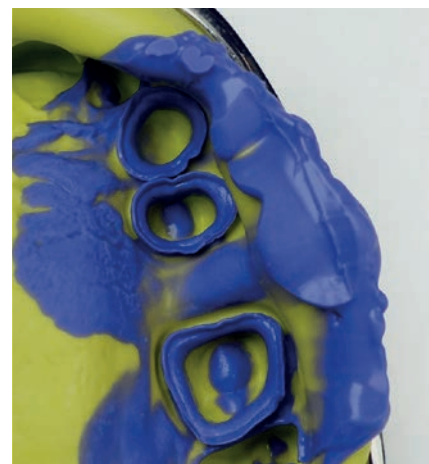
Elite P&P Putty Normal - Light Normal

Characteristics

- Hydrocompatibility and thixotropy
- Dimensional stability for up to 15 days
- Available in semi-automatic 1:1 cartridges

Advantages

- **Certified quality***: guarantees consistently high quality in production processes and product performance
- **Accurate, precise impressions**: wash hydrocompatibility helps produce a top quality impression
- **Reliability even days later**: dimensional stability for up to 15 days allows impressions to be cast even days after they are taken
- **Ease of use**: also available in semi-automatic cartridges that help standardise the process and produce the same mix irrespectively of the operator^[1,2]



Elite P&P Putty Normal - Regular



Elite P&P Putty Fast - Light Fast



*Conforming to the international reference standard (ISO 4823:2015)

Product not available on all markets.



Product	Delivery system	Viscosity	Recommended technique	Type of setting	Working time, including mixing time* (min:s)	Time in mouth** (min:s)	Setting time* (min:s)
Elite P&P Putty Soft	Manual mixing	Putty	Single step impression	Normal Set	2:00	3:30	5:30
			Double step impression	Fast Set	1:30	2:30	4:00
Elite P&P Regular Body	1:1 dispenser or Manual mixing	Medium	Single step impression	Normal Set	2:00	3:30	5:30
Elite P&P Light Body	Manual mixing or 1:1 dispenser	Light	Single step impression	Normal Set	2:00	3:30	5:30
	1:1 dispenser		Double step impression	Fast Set	1:30	2:30	4:00

* Times are intended from the beginning of mixing at 23°C /73°F. Higher temperatures shorten setting times, lower temperatures extend them.

** The time in mouth is intended as at 35°C / 95°F

Product	ISO 4823	Elastic recovery	Linear dimensional change (after 24 h)	Hardness (Shore A)	Shelf-life
Elite P&P Putty Soft	Type 0 Putty Consistency	> 99.0%	< 0.2%	60 ± 2	3 years
Elite P&P Regular Body	Type 2 Medium-bodied Consistency	> 99.5%	< 0.0 2%	45 ± 2	3 years
Elite P&P Light Body	Type 3 Light-Bodied Consistency	> 99.5%	< 0.0 2%	45 ± 2	3 years



Elite P&P Putty Soft - High viscosity addition silicone

Code	Setting time	Pack type
C206000	Normal Set	2 x 250 ml tubs (Base + Catalyst) + 2 measuring spoons
C206001	Fast Set	
C206100	Normal Set	Intro Kit: 2 x 250 ml tubs (Base + Catalyst) of Putty Soft Normal + 2 x 60 ml tubes (Base + Catalyst) of Light Normal + 2 measuring spoons + mixing pad
C206102	Normal Set	Intro Kit: 2 x 250 ml tubs (Base + Catalyst) of Putty Soft Normal + 2 x 50 ml cartridges (Base + Catalyst) of Light Normal + 6 yellow mixing tips + 2 yellow intraoral tips + 1 D2 1:1 dispenser + 2 measuring spoons
C206110	Normal Set	Trial Kit: 2 x 100 ml tubs (Base + Catalyst) of Putty Soft Normal + 2 x 60 ml tubes (Base + Catalyst) of Light Normal



NORMAL FAST

Elite P&P Regular Body - Medium viscosity addition silicone

Code	Setting time	Pack type
C206021	Normal Set	2 x 60 ml tubes (Base + Catalyst)
C206012	Normal Set	2 x 50 ml cartridges (Base + Catalyst) + 6 yellow mixing tips



Elite P&P Light Body - Low viscosity addition silicone

Code	Setting time	Pack type
C206020	Normal Set	2 x 60 ml tubes (Base + Catalyst)
C206010	Normal Set	2 x 50 ml cartridges (Base + Catalyst) + 6 yellow mixing tips
C206011	Fast Set	
C206100	Normal Set	Intro Kit: 2 x 250 ml tubs (Base + Catalyst) of Putty Soft Normal + 2 x 60 ml tubes (Base + Catalyst) of Light Normal + 2 measuring spoons + mixing pad
C206102	Normal Set	Intro Kit: 2 x 250 ml tubs (Base + Catalyst) of Putty Soft Normal + 2 x 50 ml cartridges (Base + Catalyst) of Light Normal + 6 yellow mixing tips + 2 yellow intraoral tips + 1 D2 1:1 dispenser + 2 measuring spoons
C206110	Normal Set	Trial Kit: 2 x 100 ml tubs (Base + Catalyst) of Putty Soft Normal + 2 x 60 ml tubes (Base + Catalyst) of Light Normal



NORMAL FAST

[1] Daou E. E, The elastomers for complete denture impression: A review of the literature. The Saudi Dental Journal. 2010; 22:153-160.

[2] Di Felice R, Scotti R, Belser U. The influence of the mixing technique on the content of voids in two polyether impression materials. Schweiz Monatsschr Zahnmed. 2002; 112: 12-16



C202070



Yellow mixing tips (48 pcs)

C205500



Pink mixing tips (48 pcs)

C202080



Green mixing tips (48 pcs)

C205501



Lilac mixing tips (48 pcs)

C202090



Yellow oral tips (48 pcs)

C700025



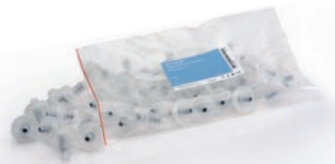
Universal Tray Adhesive - bottle 10 ml

C202100



D2 Dispenser 1:1

C205530



Dynamic-static mixing tips (50 pcs)

C205540



Mixing tip lockers (2 pcs)

D510010



Putty Cut

C207202



Mixing pad (12 sheets)

C207200



Spatula for silicones

Zetaplus System, **Zhermack's first ever silicone range**, has been on the market for over 30 years and provides a versatile solution to the diverse demands of daily clinical practice.

From the initial concept to the final product, all steps of the manufacturing process take place in-house, with stringent controls on both the choice of the starting materials and production processes. This allows us to offer constant quality and high performance. Used and highly-regarded worldwide, Zetaplus System has come to be considered synonymous with guaranteed quality and reliability by dental sector practitioners.

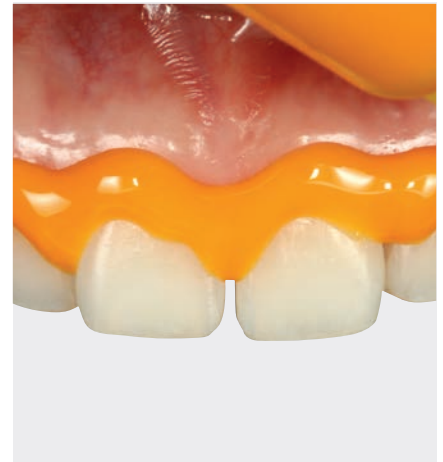
Characteristics

- Hydrocompatibility of the fluids
- Biocompatibility on damaged mucosae
- High final hardness*
- Tear resistance

Advantages

- **Hydrocompatibility of the fluids:** helps achieve an accurate impression
- **Biocompatibility on damaged mucosae:** allows safe use on patients
- **High final hardness*:** contributes to obtaining an accurate model once the gypsum has been cast
- **Tear resistance:** reduces the risk of the impression tearing when it is removed from the patient's mouth

*Zetaplus compared to Zetaplus Soft



Oranwash L



Zetaplus - Oranwash L



Mint scent



Orange scent





Product	Delivery system	Recommended technique	Clinical working time* (min:s)	Time in mouth** (min:s)	Setting time (min:s)
Zetaplus	Manual mixing	Double step impression	1:15	3:30	4:45
Zetaplus Soft	Manual mixing	Double step impression	1:15	3:30	4:45
Oranwash L	Manual mixing	Double step impression	1:30	3:30	5:00
Oranwash VL	Manual mixing	Double step impression	1:30	3:30	5:00

* Clinical use times are intended as from the start of mixing at 23°C / 73°F.

** The time in mouth is intended as at 35°C / 95°F.

Product	ISO 4823	Elastic recovery	Hardness	Surface detail reproduction	Scent	Shelf-life
Zetaplus	Type 0 Putty Consistency	98,5 %	70 Shore A	20 µm	mint	3 years
Zetaplus Soft	Type 0 Putty Consistency	98,5 %	60 Shore A	50 µm	mint	3 years
Oranwash L	Type 3 Light-Bodied Consistency	98,5 %	30 Shore A	20 µm	orange	3 years
Oranwash VL	Type 3 Light-Bodied Consistency	98,5 %	30 Shore A	20 µm	mint	3 years



Zetaplus - High-viscosity condensation silicone

Code	Setting time	Pack type
C100600	Normal Set	1 x 900 ml tub (1.53 kg) + measuring spoon
C100312	Normal Set	1 x 1800 ml tub (3 kg) + measuring spoon
C100468	Normal Set	1 x 10 kg drum + measuring spoon
C100720	Normal Set	Zetaplus L Mini Kit: 1 Zetaplus 200 ml + 1 Oranwash L 40 ml + 1 Indurent Gel 60 ml + 1 mixing block (8 sheets) + measuring spoon
C100730	Normal Set	Zetaplus L Intro Kit: 1 Zetaplus 900 ml + 1 Oranwash L 140 ml + 1 Indurent Gel 60 ml + 1 mixing block (15 sheets) + measuring spoon

Zetaplus Soft - High-viscosity condensation silicone

Code	Setting time	Pack type
C100610	Normal Set	1 x 900 ml tub (1.53 kg) + measuring spoon
C100740	Normal Set	Zetaplus VL Intro Kit: 1 Zetaplus Soft 900 ml + 1 Oranwash VL 140 ml + 1 Indurent Gel 60 ml + 1 mixing block (15 sheets) + measuring spoon

Oranwash L - Low-viscosity condensation silicone

Code	Setting time	Pack type
C100660	Normal Set	1 x 140 ml tube
C100720	Normal Set	Zetaplus L Mini Kit: 1 Zetaplus 200 ml + 1 Oranwash L 40 ml + 1 Indurent Gel 60 ml + 1 mixing block (8 sheets) + measuring spoon

Oranwash VL - Low-viscosity condensation silicone

Code	Setting time	Pack type
C100650	Normal Set	1 x 140 ml tube
C100740	Normal Set	Zetaplus VL Intro Kit: 1 Zetaplus Soft 900 ml + 1 Oranwash VL 140 ml + 1 Indurent Gel 60 ml + 1 mixing block (15 sheets) + measuring spoon

Indurent Gel - Gel catalyst for condensation silicones

Code	Used with	Pack type
C100700	Zetaplus System	1 x 60 ml tube

Catalyst



C207201



Mixing pad (15 sheets)

C207200



Spatula for silicones

D510010



Putty cut



Impression systems

Transparent matrix

Elite Glass is the addition silicone recommended for the construction of highly transparent matrices that allows to resolve multiple imperfections with excellent aesthetic results. It is used in the most modern therapeutic protocols. For sophisticated services it is suitable for an aesthetic restoration that satisfies every patient, even the most demanding.

A-SILICONE

Elite Glass 52

Elite glass is an addition silicone specific for the creation of transparent matrices for aesthetic reconstructions in light-curing composite, with direct technique and indirect technique.

Its high transparency and correct processing time make it particularly effective for dischromy, diastemia, fractures, rotation, conoids and other types of dental malformations.

Characteristics

- Precise because dimensionally stable over time and after disinfection
- High final hardness (70 Shore A)
- Easily repositionable in mouth once polymerized
- After polymerization can be finished with cutters or other sharp tools

Advantages

- High transparency of the material
- Excellent photopolymerization of the composite used for restoration
- High quality standards of the aesthetic restoration
- Versatility of use



Elite Glass



Elite Glass

Product	Delivery system	Recommended technique	Viscosity	Recommended applications	Type of setting	Working time* (min:s)	Setting time* (min:s)	Detail reproduction	Linear dimensional change (after 24 h)	Hardness (Shore A)
Elite Glass	1:1 dispenser	Monophase impression	Medium	Transparent matrices for veneering	Fast	0:40	2:10	20 µm	0.18 %	70

* The times mentioned must be intended at 35 °C - 95 °F



A-Silicone for transparent matrices

Code	Packaging
C401610	Standard Pack: 2 x 50 ml cartridges + 6 mixing tips green



Code C202080

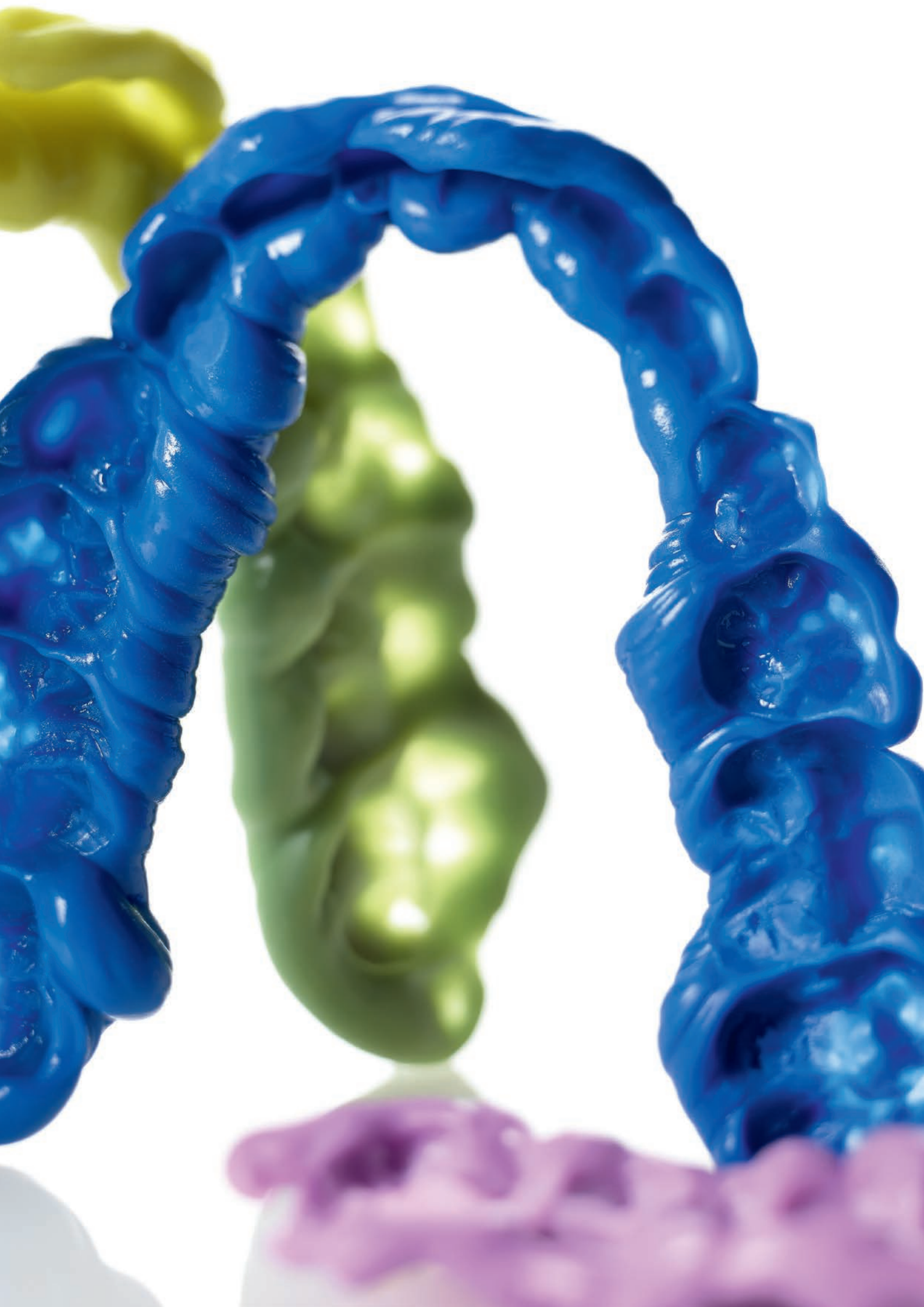


Green mixing tips (48 pcs)

Code C202100



D2 Dispenser 1:1



Impression systems

Bite registration

Occlufast is a vast range of addition silicones for bite registration, developed to meet the diverse demands of clinical practice.

The range includes a number of different solutions: Occlufast+, the silicone with a high final hardness, also available in a thermochromic version; scannable Occlufast CAD and, lastly, Occlufast Rock, Zhermack's first bite registration material that is now used the world over.

According to clinical literature, the ideal characteristics of a bite registration material are: **limited bite resistance, dimensional stability, rigidity, accurate reproduction of the incisal plane, manageability, biocompatibility, ease of verification**^[1,2]. **Occlufast range products meet these requirements** and therefore favour the achievement of an accurate bite registration.

HIGH-TECH, HIGH-PERFORMANCE SILICONES

Occlufast+ 56

Occlufast+ Color 56

SILICONE FOR SPECIAL APPLICATIONS

Occlufast CAD 57

VERSATILE SILICONE

Occlufast Rock 58

Occlufast+ | Occlufast+ Color

Addition silicones

Impression systems / Bite registration

Occlufast+ is an addition silicone with a high final hardness that affords accurate bite registration.

Occlufast+ Color is the thermochromic version that changes colour with changes in temperature. This colour change provides dentists with a visual guide by indicating the complete polymerisation of the material in the patient's mouth.

Characteristics

- Imperceptible consistency
- High final hardness (37±5 Shore D)
- Thixotropy
- High dimensional stability, up to 15 days

Advantages

- The product's **imperceptible consistence** favours the achievement of an accurate and reliable result by allowing the patient to bite in a natural manner, thus reducing the chances of the mandible shifting due to an unnatural occlusion^[3]
- The high **final hardness** allows the material to resist even under compression, which helps to achieve a precise and accurate registration^[4]
- **Thixotropy** prevents the material from running, whilst allowing it to flow easily over the surfaces of the teeth^[4]
- **Dimensional stability** makes it possible to maintain the accuracy of the bite registration for up to 15 days from the time it is taken, even once it has been disinfected using products containing quaternary ammonium salts, mixtures of alcohol and surface tension reducers
- **Dispensing using the yellow mixing tip** reduces waste and makes it possible to perform up to 2 bite registrations more than the green tips*



Occlufast+



Occlufast+ Color



Mangosteen
scent



Lime scent



*Saving of 1.4 ml per use. In-house in vitro test considering 5.5 ml of material per bite registration



Occlufast+ Color



Occlufast CAD is a scannable addition silicone for accurate bite registration.

Occlufast CAD is the solution developed for practitioners looking for a product that facilitates digital work-flow access, by improving communication with the dental technician.

Characteristics

- Imperceptible consistency
- Scannability*
- Thixotropy
- Dimensional stability, up to 7 days

Advantages

- The product's **imperceptible consistence** favours the achievement of an accurate and reliable result by allowing the patient to bite in a natural manner, thus reducing the chances of the mandible shifting due to an unnatural occlusion^[3]
- **Scannability** favours digital work-flow access
- **Thixotropy** prevents the material from running, whilst allowing it to flow easily over the surfaces of the teeth^[4]
- **Dimensional stability** makes it possible to maintain the accuracy of the bite registration for up to 7 days from the time it is taken, even once it has been disinfected using products containing quaternary ammonium salts, mixtures of alcohol and surface tension reducers



Occlufast CAD



Occlufast CAD



*Occlufast CAD can be scanned using optical scanners (structured light and laser) and CBCT without using opacifier powders.

Occlufast Rock

Addition silicones

Impression systems / Bite registration

Occlufast Rock was Zhermack's first addition silicone for bite registration, and is still one of the best-known and most popular materials in the world.

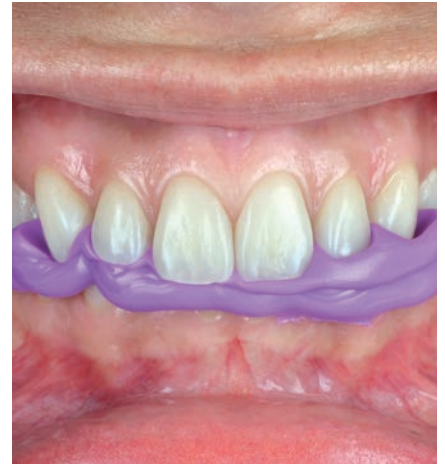
Occlufast Rock is the solution developed for practitioners looking for a reliable product able to satisfy the diverse demands of daily clinical practice.

Characteristics

- Imperceptible consistency
- Thixotropy
- Dimensional stability, up to 7 days

Advantages

- The product's **imperceptible consistence** favours the achievement of an accurate and reliable result by allowing the patient to bite in a natural manner, thus reducing the chances of the mandible shifting due to an unnatural occlusion^[3]
- **Thixotropy** prevents the material from running, whilst allowing it to flow easily over the surfaces of the teeth^[4]
- **Dimensional stability** makes it possible to maintain the accuracy of the bite registration for up to 7 days from the time it is taken, even once it has been disinfected using products containing quaternary ammonium salts, mixtures of alcohol and surface tension reducers



Occlufast Rock



Occlufast Rock





Materials for bite registration	Delivery system	Working time* (min:s)	Time in mouth** (min:s)	Scent	Thermochromic	Detail reproduction	Hardness
Occlufast+	1:1 dispenser gun	0:30	1:00	Mangosteen		5 µm	37±5 Shore D
Occlufast+ Color	1:1 dispenser gun	0:30	1:00	Lime	●	5 µm	37±5 Shore D
Occlufast Rock	1:1 dispenser gun	0:30	1:00			20 µm	95 Shore A
Occlufast CAD	1:1 dispenser gun	0:30	1:00			20 µm	95 Shore A

* Clinical use times are intended as from the start of mixing at 23 °C / 73 °F.

** The time in mouth is intended as at 35 °C / 95 °F.

Bibliography

[1] Wieckiewicz M, Grychowska N, Zietek M, Wieckiewicz W. Evaluation of the elastic properties of thirteen silicone interocclusal recording materials. BioMed Research International. 2016; 1-8. ID 7456046 10.1111/j.1365-2842.2010.02173.x.

[2] Anup G, Ahila S C, VasanthaKumar M. Evaluation of dimensional stability, accuracy and surface hardness of interocclusal recording materials at various time intervals: an in vitro study. J Indian Prosthodontic Society. 2011; 11(1): 26-31. DOI 10.1007/s13191-011-0054-0

[3] Mobilio M, Catapano S. Effect of experimental jaw muscle pain on occlusal contacts. Journal of Oral Rehabilitation. 2011; 38(6): 404-409. doi: 10.1111/j.1365-2842.2010.02173.x

[4] Kenneth A, Phillips' Science of Dental Materials, 2012; 33



High-tech, high-performance bite registration silicones

Code	Product	Pack type
C200791	Occlufast+	2 x 50 ml cartridges (Base + Catalyst) + 12 yellow mixing tips
C200792	Occlufast+	8 x 50 ml cartridges (Base + Catalyst)
C200790	Occlufast+	1 x 50 ml cartridges (Base + Catalyst) + 6 yellow mixing tips
C200781	Occlufast+ Color	2 x 50 ml cartridges (Base + Catalyst) + 12 yellow mixing tips
C200782	Occlufast+ Color	8 x 50 ml cartridges (Base + Catalyst)
C200780	Occlufast+ Color	1 x 50 ml cartridges (Base + Catalyst) + 6 yellow mixing tips

GREEN at room temperature | YELLOW at 35 °C in the mouth

Bite registration silicones for special applications

Code	Product	Pack type
C200800	Occlufast CAD	2 x 50 ml cartridges (Base + Catalyst) + 12 green mixing tips

Versatile bite registration silicone

Code	Product	Pack type
C200726	Occlufast Rock	2 x 50 ml cartridges (Base + Catalyst) + 12 green mixing tips



C202070



Yellow mixing tips (48 pcs)

C202080

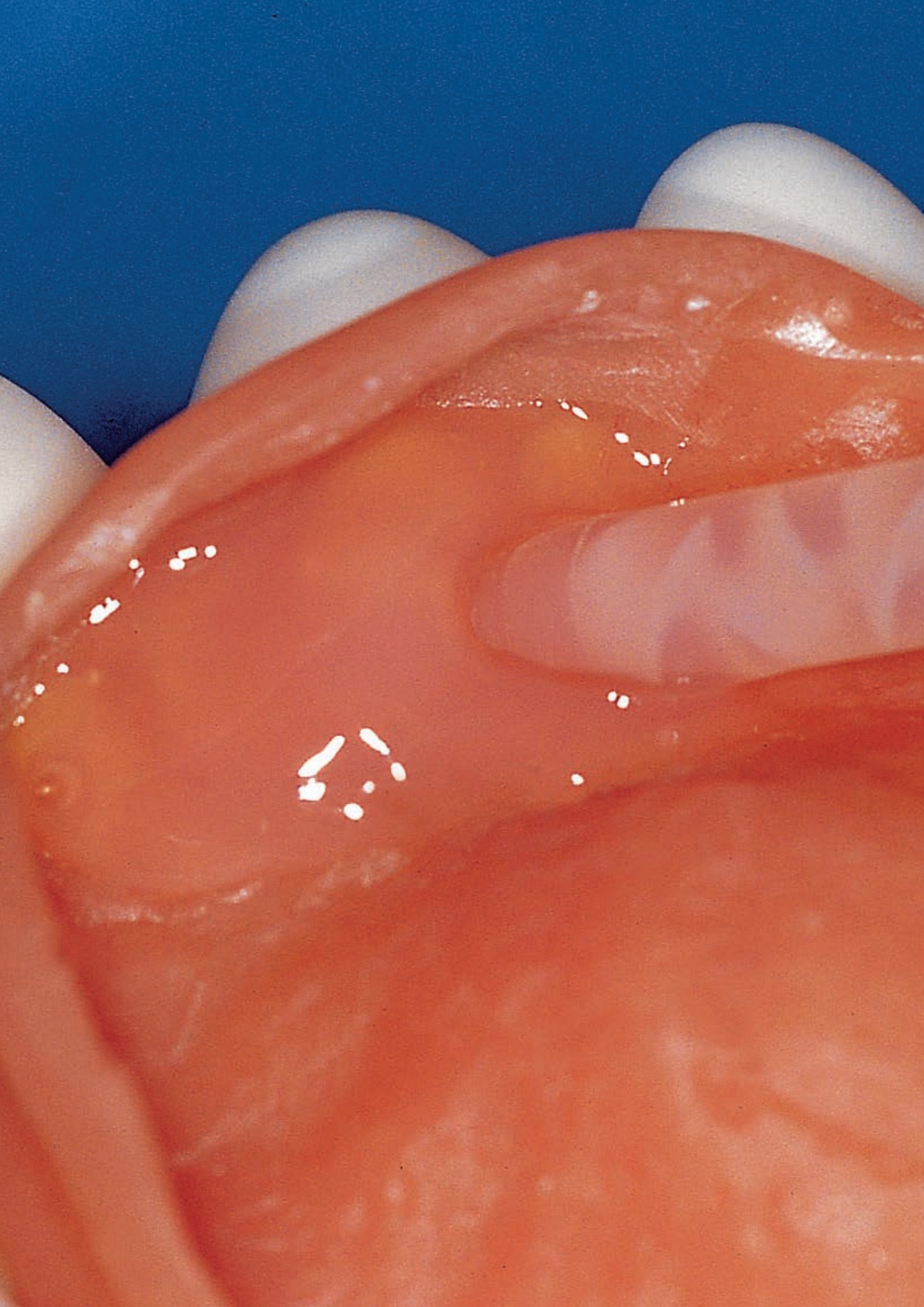


Green mixing tips (48 pcs)

C202100



D2 1:1 dispenser



Impression systems

Relining

For a correct adaptation of the prosthesis to the concerned mucosa, to maintain its stability and preserve its oral functionality, Zhermack proposes Elite Soft Relining.

Elite Soft Relining is easy to use and provide immediate relief to the patient in a single appointment, save chair time and have long-term results.

It has an ideal consistency, a neutral flavour and the pink colour is providing pleasing aesthetics.

A-SILICONE FOR RELINING

Elite Soft Relining 64

Elite Soft Relining

A-Silicone for relining

Impression systems / Relining

Elite Soft Relining is an A-Silicone for the preparation of soft relining on complete, partial or rehabilitation prostheses.

Easy to use, it is particularly indicated for direct application in the dental practice as well as in the laboratory.

Characteristics

- 1:1 Mixing ratio
- Excellent bonding to prosthetic base with Zhermack Elite Relining Primer special adhesive
- In order to obtain smooth and stable edges, use the special Zhermack Varnish A+B on the margins
- Odourless and tasteless
- Pink Colour

Advantages

- Ease of use
- Elastic memory to make the prosthesis more stable
- It permits masticatory load absorption
- Suitable for direct use in the practice and for indirect use in the laboratory
- Chair time saving and immediate comfort for the patient



Product	Working time* (min:s)	Trimming time* (direct method) (min:s)	Time in mouth* (direct method) (min:s)	Elastic recovery	Linear dimensional change (after 24 h)	Hardness (Shore A)
Elite Soft Relining	0:60	0:60	5:00	99.9 %	< 0.2 %	35

* The times mentioned must be intended at 35 °C - 95 °F

Elite Soft Relining - A-Silicone for relining

Code	Packaging
C700100	Standard Pack: 1 cartridge 50 ml + 6 mixing tips yellow + 1 Primer 4 ml + 1 Varnish A 5 ml + 1 Varnish B 5 ml + 1 finishing bur + 1 mixing plate + 1 brush handle + 12 brushes
C700130	Refill: 1 cartridge 50 ml + 6 mixing tips yellow
C700140	1 bottle, Primer 4 ml
C202070	Mixing tips yellow (48 pcs)
C202100	D2 Dispenser 1:1



Impression systems

Accessories

To meet the needs of dental professionals, Zhermack offers everything needed for taking an impression. Completing the wide range of impression materials is a series of accessories specifically designed to improve the quality of impression taking.

A wide range of specific impression trays according to the needs of the clinical case. When it is necessary to have a custom tray, the light-curing resins are available. An adhesive to increase the adherence between the tray and the material. A wide range of retraction cords to correctly prepare the gingival margin. Solutions developed to increase the productivity of the dental practice.

IMPRESSION TRAYS

Hi-Tray Metal 66

CUSTOM IMPRESSION TRAYS

Elite LC Tray..... 67

Elite LC Tray ROUND 67

GINGIVAL DISPLACEMENT

Elite Cord 68

ADHESIVE FOR TRAYS

Universal Tray Adhesive 69

Hi-Tray Metal

Metal impression trays

Impression systems / Accessories

Zhermack offers a wide range of impression trays for fixed prosthesis, in metal and in plastic, and for removable prosthesis, in rigid plastic. The Zhermack range of impression trays is also suitable for many uses such as models in the practice, bruxism bites, whitening masks, sports masks for bites, impressions for custom impression trays, preliminary impressions, impressions for in-lay and on-lay, etc.

The **Hi-Tray Metal** are BSA stainless steel trays with 16.70 % chrome for standard applications.

Characteristics

- Can be sterilized in a cold solution or in autoclave
- Available in two versions: solid and perforated

Advantages

- High deformation resistance
- Greater precision of the impression
- Rim Lock anchoring system for a perfect adhesion of the material to the impression tray
- Excellent finishing
- Soldering point accuracy
- Durability

Single packaging in the solid impression tray version:

Size	1	2	3	4	5
Upper	D51SS	D52SS	D53SS	D54SS	D55SS
Lower	D51IS	D52IS	D53IS	D54IS	D55IS

Single packaging in the perforated impression tray version:

Size	1	2	3	4	5
Upper	D51SP	D52SP	D53SP	D54SP	D55SP
Lower	D51IP	D52IP	D53IP	D54IP	D55IP



Hi-Tray Metal perforated upper



Hi-Tray Metal solid upper



Hi-Tray Metal perforated lower



Hi-Tray Metal solid lower

Elite LC Tray | Elite LC Tray ROUND

Light-curing resins

Impression systems / Accessories

Elite LC Tray is the line of light-curing resin plates for making custom impression trays and removable prosthesis modeling.

Easy and quick to use, it meets the needs of the dental practice by optimising working times without compromising on quality.

Characteristics

- Cured with either halogen or UV light (3 - 5 minutes)
- Stable to daylight or artificial light for about 20'
- Available in three colours: blue, white and pink
- Minimum shrinkage after curing

Advantages

- Easy to model, not sticky
- Quick, saves time with respect to traditional self-curing resins
- Uniform thickness



Elite LC Tray ROUND



Elite LC Tray

Product	Curing time (min:s)	Thickness	Hardness (Shore D)	Curing
Elite LC Tray	3:00 - 5:00	2.5 mm	80	UV light (350 - 400 nm) Halogen light (420 - 480 nm)
Elite LC Tray ROUND	3:00 - 5:00	2.5 mm	80	UV light (350 - 400 nm) Halogen light (420 - 480 nm)

Elite LC Tray - Light-curing resin plates for individual trays

Code	Packaging
D500011	Elite LC Tray White (50 pcs)
D500021	Elite LC Tray Pink (50 pcs)
D500031	Elite LC Tray Blue (50 pcs)

Elite LC Tray ROUND - Light-curing resin plates for individual trays

Code	Packaging
D500050	Elite LC Tray ROUND White (50 pcs)
D500052	Elite LC Tray ROUND Pink (50 pcs)

Elite Cord is recommended for gingival displacement before impression taking in fixed prostheses; before adhesive reconstructions and/or restorations and in operations near the marginal tissues (for example, preparation of the sub-gingival margins).

Characteristics

- Non-impregnated cord
- Made from 100 % cotton fibre
- Interlinked knitted structure
- Each bottle contains 275 cm of cord
- Available in five thicknesses identified by different colours:
 - # 000 size (black)
 - # 00 size (yellow/black)
 - # 0 size (purple/white)
 - # 1 size (blue/white)
 - # 2 size (green/white)
- Compatible with all types of commercially available haemostatic solution

Advantages

- Easy and quick to position in the gingival sulcus thanks to its interlinked structure and high dimensional stability
- Optimal gingival displacement without trauma, thanks to the light but constant elastic pressure applied on the gingival tissue
- Effective control of the flow of fluid in the sulcus, thanks to the highly absorbent power of the 100 % cotton fibre
- Wide range of thicknesses, enabling the required gingival displacement to be obtained with all gum types



Elite Cord



Elite Cord



Code	Packaging
C610000	Elite Cord # 000 (1 x 275 cm)
C610010	Elite Cord # 00 (1 x 275 cm)
C610020	Elite Cord # 0 (1 x 275 cm)
C610030	Elite Cord # 1 (1 x 275 cm)
C610040	Elite Cord # 2 (1 x 275 cm)
C610001	Elite Cord kit # 000 (5 x 275 cm)
C610011	Elite Cord kit # 00 (5 x 275 cm)
C610021	Elite Cord kit # 0 (5 x 275 cm)
C610031	Elite Cord kit # 1 (5 x 275 cm)

Universal Tray Adhesive

Adhesive for A-Silicones

Impression systems / Accessories

Universal Tray Adhesive is a specific adhesive for A-Silicones.

Characteristics

- Easy brushing adhesive
- Blue colour

Advantages

- Excellent bonding to metal trays
- Does not create thickness
- Fast solvent evaporation



Universal Tray Adhesive

Code	Packaging
C700025	10 ml bottle



Impressions disinfection

Zeta 7 Spray - **page 98**
Zeta 7 Solution - **page 98**



Cleaners for alginates and gypsum

Algitray - **page 100**
Gypstray - **page 100**



Model casting

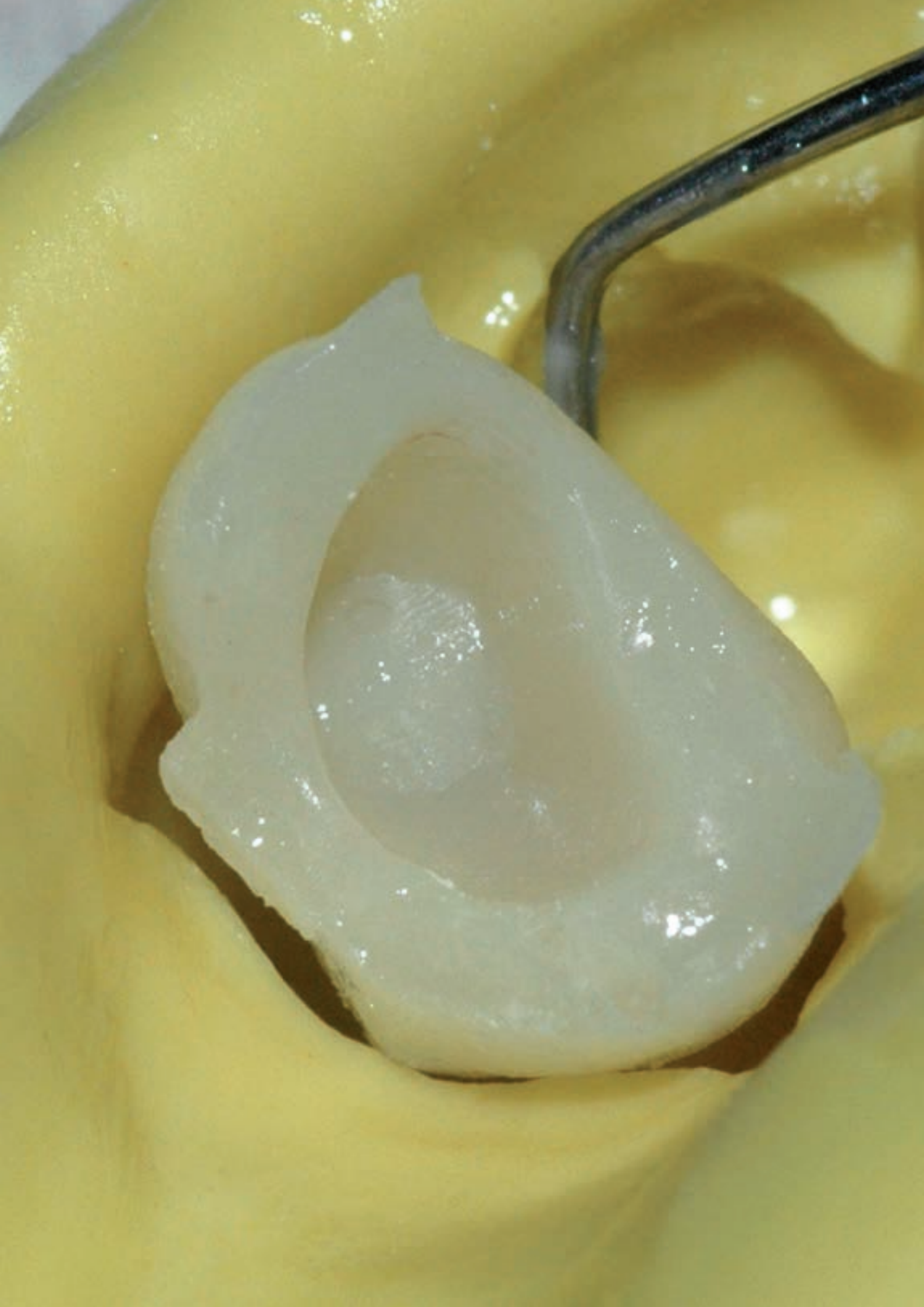
Gypsum - **page 120**



Restorative

The preservation of natural teeth and the research of an aesthetic solution are the most important needs for patients. Improving your smile implies specific aesthetic and functional requirements which Zhermack meets with bisacrylic self-curing resins for temporary restorations.

High quality materials, that fulfil the expectations of the patient and the professional.



Restorative

Temporary restorations

Acrytemp is the ideal choice to make provisional crowns and bridges, onlays, inlays and veneers, in an easy and fast way, with a high aesthetic impact. It is available in self-mixing cartridges, for a correct and fast application.

Its formula without methyl methacrylate monomer and the low temperature increase during setting, ensure a greater comfort for the patient and preserve tooth vitality.

BISACRYLIC SELF-CURING RESIN

Acrytemp 74

Acrytemp is a bisacrylic self-curing resin for the fast preparation of short and long-term provisional elements.

Acrytemp can be used with different working techniques, both for direct and indirect method.

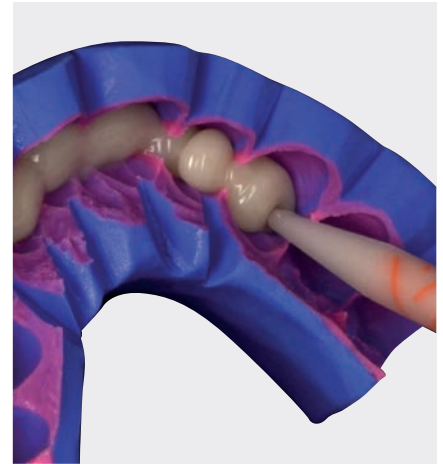
It is practical to use, thanks to the self-mixing system, easy to trim and polish, with a high fracture resistance. Its particular formulation is without methyl methacrylate monomer and allows to maintain low temperatures during the setting reaction that does not irritate the pulp. Acrytemp is available in 5 shades and offers a natural aesthetic effect that reproduces the colour of teeth, to meet the needs of the patients and of the dentist.

Characteristics

- High fracture resistance
- Methyl methacrylate monomer free
- Low temperature increase during the setting reaction
- The colourings A1; A2; A3; A3.5; B1 allow to meet the most common clinical situations
- Natural fluorescence
- Self-mixing system in 50 ml (4:1) cartridge for an optimal dosage and time saving

Advantages

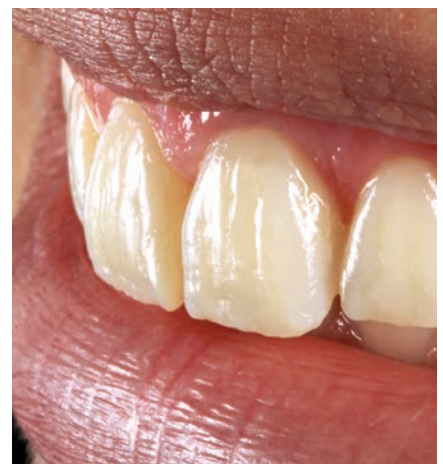
- Easy handling
- Can be easily trimmed and polished
- Respects the pulp, due to low exothermic setting reaction
- No irritations
- Natural aesthetics effect of the finished provisional elements



Acrytemp



Acrytemp



Acrytemp



Product	Recommended applications	Working time (min:s)	Elastic phase from application (min:s)	Setting time (min:s)	Compressive strength	Flexural strength
Acrytemp	Temporary crowns and bridges, inlays, onlays and veneers	0:50	1:00 - 2:00 (35 °C) 3:00 - 4:00 (23 °C)	4:30 (45 - 55 °C) 6:00 (23 °C)	250 MPa	65 MPa



Acrytemp - Bisacrylic self-curing resin

Code	Colour	Packaging
C700201	A1	Standard Pack: 1 cartridge 50 ml (76 g) + 15 mixing tips 4:1
C700200	A2	Standard Pack: 1 cartridge 50 ml (76 g) + 15 mixing tips 4:1
C700215	A3	Standard Pack: 1 cartridge 50 ml (76 g) + 15 mixing tips 4:1
C700205	A3.5	Standard Pack: 1 cartridge 50 ml (76 g) + 15 mixing tips 4:1
C700211	B1	Standard Pack: 1 cartridge 50 ml (76 g) + 15 mixing tips 4:1



ACCESSORIES







Hygiene

Cleaning, disinfection and sterilization in a dental practice are a guarantee of protection and safeguarding against infection.

It is therefore essential to choose effective solutions with a broad spectrum of action for the safety of professionals and patients. Products free of toxic substances such as phenols and aldehydes, that do not damage instruments and surfaces, with a quick action and easy to use. Products like the Zeta Hygiene range that arise from Zhermack experience in the field of medical and surgical device disinfection and cold sterilization. Innovative and comprehensive solutions, subject to strict production standards, checked and tested according to the latest European Norms, to offer the required level of protection in your dental practice every day.

Ordinary, surgical dental instruments and burs disinfection and sterilization

Zeta 1 Ultra

Zeta 2 Enzyme

Zeta 2 Sporex

page 82

page 82

page 82



Washable surfaces cleaning

Zeta 4 Wash

page 86



Impressions disinfection

Zeta 7 Spray

Zeta 7 Solution

page 92

page 92





Medical devices surfaces disinfection and cleaning

Zeta 3 Soft
Zeta 3 Wipes TOTAL
Zeta 3 Foam
Zeta 3 Wipes POP-UP

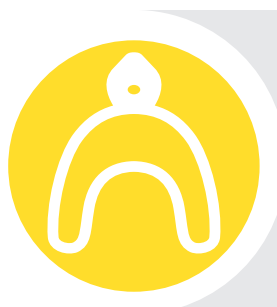
page 86
page 86
page 86
page 86



Suction unit disinfection, cleaning and deodorisation

Zeta 5 Power Act

page 90



Trays and instruments gypsum and alginate removal

Algitray
Gypstray

page 94
page 94



Zeta 6 Hydra

Hand cleaning page 98



Hygiene

Instruments and burs

The Zeta Hygiene range offers products with a broad spectrum for the disinfection and sterilization of ordinary, surgical dental instruments and burs.

Leading edge products characterised by high quality standards for working in safety without sacrificing convenience and affordability. Compliant with the latest European Norms on disinfection, respecting both professionals' health, as they are free of harmful substances such as aldehydes and phenols, and instruments as they prevent damage.

Zeta 1 Ultra	82
Zeta 2 Enzyme	82
Zeta 2 Sporex	82

Zeta 1 | Zeta 2

Ordinary, surgical dental instruments and burs disinfectants and sterilizers

Hygiene / Instruments and burs

Zeta 1 Ultra is a concentrated liquid disinfectant and cleaner suitable for ordinary, surgical dental instruments and burs.

Zeta 2 Enzyme is a tri-enzymatic disinfectant and cleaner in powder specific for ordinary, surgical instruments and burs.

Zeta 2 Sporex is a cold chemical sterilizer and high level disinfectant in powder, specific for dental instruments and particularly recommended for medical devices that cannot be sterilized in an autoclave.

Characteristics

- Broad spectrum of action according to the latest European Norms validated on disinfection
- High efficiency concentrated formulas
- High compatibility with materials

Advantages

- **Efficacy:** high protection for professionals and patients
- **Safety:** free from aldehydes and phenols
- **Easy to use:** short time of action and easy dosage thanks to the dosing bottle with dispenser



Zeta 2 Sporex



Zeta 2 Sporex



Zeta 1 Ultra



Zeta 1 Ultra



Zeta 1 Ultra



Product	Type of product	Active ingredients	Dilution	Action time	Distinctive characteristics	Spectrum of action
Zeta 1 Ultra	Disinfectant and cleaner	Alkylamine, Quaternary Ammonium Salts	2 % (wide disinfection)	60 minutes in static bath* or 30 minutes in ultrasonic bath at 35° C	Disinfection and cleaning of instruments and burs	STATIC BATH: Bactericidal: EN 13727, EN 14561 (<i>S. aureus</i> , <i>P. aeruginosa</i> , <i>E. hirae</i>) Yeasticidal: EN 13624, EN 14562 (<i>C. albicans</i>) Mycobactericidal, including Tuberculocidal: EN 14348, EN 14563 (<i>M. terrae</i> , <i>M. avium</i>) Virucidal: EN 14476 (Poliovirus, Adenovirus, Norovirus, HIV, HBV, HCV, Ebola, Herpes simplex and all human and animal influenza viruses) Bactericidal, Yeasticidal (15'): VAH * Excluding Fungicidal ULTRASONIC BATH: Bactericidal, Yeasticidal, Fungicidal, Mycobactericidal including Tuberculocidal, Limited virucidal and Virucidal Tests carried out in dirty conditions.
			1 % (rapid disinfection, with limited spectrum of action)	15 minutes in static bath		STATIC BATH: Bactericidal: EN 13727, EN 14561 (<i>S. aureus</i> , <i>P. aeruginosa</i> , <i>E. hirae</i>) Yeasticidal: EN 13624, EN 14562 (<i>C. albicans</i>) Limited virucidal: HIV, HBV, HCV, Ebola, Herpes simplex and all human and animal influenza viruses (DVV/RK1, prEN 16777) Mycobactericidal including Tuberculocidal (60'): VAH Tests carried out in dirty conditions.
Zeta 2 Enzyme	Disinfectant and cleaner	Active Oxygen, enzymes	2 %	10 minutes	Fast disinfection and enhanced cleaning power thanks to enzymes (protease, amylase and lipase)	Bactericidal: EN 13727, EN 14561 (<i>S. aureus</i> , <i>P. aeruginosa</i> , <i>E. hirae</i>) Yeasticidal: EN 13624, EN 14562 (<i>C. albicans</i>) Mycobactericidal, including Tuberculocidal: EN 14348, EN 14563 (<i>M. terrae</i> , <i>M. avium</i>) Virucidal: EN 14476 (Poliovirus, Adenovirus, Norovirus including HIV, HBV, HCV) Tests carried out in dirty conditions.
Zeta 2 Sporex	Cleaner, disinfectant and cold chemical and sterilizer	Peracetic Acid	2 %	10 minutes	Fast sterilization	Bactericidal: EN 13727, EN 14561 (<i>S. aureus</i> , <i>P. aeruginosa</i> , <i>E. hirae</i>) Fungicidal: EN 13624, EN 14562 (<i>C. albicans</i> , <i>A. niger</i>) Mycobactericidal, including Tuberculocidal: EN 14348, EN 14563 (<i>M. terrae</i> , <i>M. avium</i>) Virucidal: EN 14476 (Poliovirus, Adenovirus, Norovirus including HIV, HBV, HCV) Sporicidal: EN 13704 (<i>B. subtilis</i>) Tests carried out in dirty conditions.



Zeta 2 Enzyme



Zeta 2 Enzyme



Zeta 2 Enzyme



Hygiene

Surfaces

A wide range of solutions to fulfill the needs of each user. The Zeta 3 line lets you choose between low alcohol content or alcohol-free products, guaranteeing rapid and deep disinfection of surfaces, including the most delicate ones.

Practical to use and free of harmful substances such as aldehydes and phenols. All Zeta 3 line products clean and disinfect in a single step (2 in 1 action), providing high protection and saving time.

Zeta 3 Soft	86
Zeta 3 Wipes TOTAL	86
Zeta 3 Foam	86
Zeta 3 Wipes POP-UP	86
Zeta 4 Wash	86

Zeta 3 | Zeta 4

Medical devices surfaces disinfectants and cleaners

Hygiene / Surfaces

Zeta 3 Soft is an alcoholic, ready to use disinfectant and cleaner for medical devices surfaces.

Zeta 3 Wipes TOTAL are wipes impregnated with an alcoholic solution for the rapid disinfection and cleaning of small medical devices surfaces.

Zeta 3 Foam is a ready to use alcohol-free disinfectant and cleaner foam especially recommended for delicate medical devices surfaces.

Zeta 3 Wipes POP-UP are large wipes impregnated with reduced alcohol content solution for the rapid disinfection and cleansing of medical devices surfaces including the most delicate ones.

Zeta 4 Wash is a concentrated cleaner and deodorant solution for large surfaces.

Characteristics

- Broad spectrum of action according to the latest European Norms validated on disinfection
- Aldehyde and phenol-free products
- Tested compatibility with surfaces , including the most delicate ones

Advantages

- **Efficacy:** high protection for professionals and patients
- **Safety:** free from aldehydes and phenols
- **Speed and convenience:** disinfection and cleaning in a single step



Zeta 3 Soft



Zeta 3 Soft



Zeta 3 Wipes TOTAL



Zeta 3 Wipes TOTAL



Zeta 3 Foam



Product	Type of product	Active ingredients	Action time	Applications	Distinctive characteristics	Spectrum of action
Zeta 3 Soft	Disinfectant	Alcohols	1 - 5 minutes	Normal surfaces	Fast, does not leave residue	Bactericidal: EN 13727, EN 14561 (<i>S. aureus</i> , <i>P. aeruginosa</i> , <i>E. hirae</i>) Yeasticidal: EN 13624, EN 14562 (<i>C. albicans</i>) Tuberculocidal: EN 14348, EN 14563 (<i>M. terrae</i>) Virucidal: EN 14476 (Poliovirus, Adenovirus, Norovirus, Parvovirus including HIV, HBV, HCV) Tests carried out in dirty conditions.
Zeta 3 Wipes TOTAL	Disinfectant	Alcohols	1 - 5 minutes	Normal surfaces	Practical for small surfaces	Bactericidal: EN 13727, EN 14561 (<i>S. aureus</i> , <i>P. aeruginosa</i> , <i>E. hirae</i>) Yeasticidal: EN 13624, EN 14562 (<i>C. albicans</i>) Tuberculocidal: EN 14348, EN 14563 (<i>M. terrae</i>) Virucidal: EN 14476 (Poliovirus, Adenovirus, Norovirus, Parvovirus including HIV, HBV, HCV) Tests carried out in dirty conditions.
Zeta 3 Foam	Disinfectant	Quaternary Ammonium Salts	1 - 5 minutes	Delicate surfaces	Alcohol-free, can be used on all surfaces	Bactericidal: EN 13727, EN 14561 (<i>S. aureus</i> , <i>P. aeruginosa</i> , <i>E. hirae</i>) Yeasticidal: EN 13624, EN 14562 (<i>C. albicans</i>) Tuberculocidal: EN 14348, EN 14563 (<i>M. terrae</i>) Virucidal: EN 14476 (Poliovirus, Adenovirus, Norovirus, Parvovirus including HIV, HBV, HCV) Tests carried out in dirty conditions.
Zeta 3 Wipes POP-UP	Disinfectant	Quaternary Ammonium Salts	1 - 5 minutes	Delicate surfaces	Large, thick, resistant and dermatologically tested wipes	Bactericidal: EN 13697, EN 1276*, EN 14561*, EN 1451 (MRSA) Fungicidal: EN 13697 (<i>A. niger</i>), EN 14562 (<i>A. fumigatus</i>) Yeasticidal: EN 1650*, EN 13624, EN 13697, EN 14562 (<i>C. albicans</i>) Tuberculocidal: EN 14348, EN 14563 (<i>M. terrae</i>) Virucidal: EN 14476 (HBV, HCV, Adenovirus, Coronavirus, Norovirus, VRS, Polyomavirus, H1N1, Rotavirus), EN 14476* (HSV) Tests carried out in clean conditions. * Tests carried out in dirty conditions.
Zeta 4 Wash	Cleaner	Cationic and Non-ionic Surfactants < 5 %	1 - 5 minutes	Washable surfaces	Does not leave halos and dries quickly	



Zeta 3 Foam



Zeta 3 Wipes POP-UP



Zeta 3 Wipes POP-UP



Hygiene

Special applications

Zhermack offers different solutions for specific applications.

SUCTION UNIT DISINFECTANTS AND CLEANERS

Zeta 5 Power Act 90

IMPRESSIONS DISINFECTANTS

Zeta 7 Spray 92

Zeta 7 Solution 92

CLEANERS FOR THE REMOVAL OF TRAYS AND INSTRUMENTS ALGINATE AND GYPSUM RESIDUES

Algitray 94

Gypstray 94

For the disinfection and cleaning of suction units.

Zeta 5 Power Act: 3-in-1 action allows to disinfect, clean and deodorise the suction tubes of the dental unit with a single product, assuring high protection for the professionals and patients. The special non-foaming and non-aggressive formula allows the normal functionality of the suction tubes, and thus of the dental unit.

Zeta 5 Power Act is a concentrated disinfectant and cleaner with a broad spectrum of action that allows to choose between two action times: standard evening disinfection or rapid disinfection in only 15 minutes*.

Characteristics

- Broad spectrum of action according to the latest European Norms validated on disinfection
- Non-foaming and non-aggressive formula on aspiration tubes
- Active in presence of organic material
- Tested compatibility with the suction unit components

Advantages

- **Efficacy:** high protection for professionals and patients
- **Protection:** allows the normal functionality of the suction tubes of the dental unit
- **Easy to use:** short time of action and easy dosage bottle with dispenser

* Excluding Tuberculocidal action



Zeta 5 Power Act



Zeta 5 Power Act



Zeta 5 Power Act



Zeta 5 Power Act



Zeta 5 Power Act



Product	Type of product	Active ingredients	Dilution	Action time	Distinctive characteristics	Spectrum of action
Zeta 5 Power Act	Disinfectant	Alkylamine, Quaternary Ammonium Salts	1 %	Overnight or 15 minutes*	A three-in-one product for disinfecting, cleaning and deodorising in a single step	Bactericidal: EN13727, EN14561 (<i>S. aureus</i> , <i>P. aeruginosa</i> , <i>E. hirae</i>) Yaesticidal: EN13624, EN14562 (<i>C. albicans</i>) Tuberculocidal: EN14348 (<i>M. terrae</i>) Limited virucidal: DVV/RKI, DVV (non-porous surfaces), prEN16777 towards encapsulated and lipophilic viruses including blood viruses (HIV, HBV, HCV), Herpes simplex and families of virus such as the Orthomyxoviridae (including all human and animal influenza viruses such as H5N1 and H1N1), Filoviridae (ebola virus) and Paramyxoviridae (measles virus) Tests carried out in dirty conditions.
			0.5 %	60 minutes		Bactericidal, Yeasticidal: VAH Tests carried out in dirty conditions.

* Excluding Tuberculocidal action



Zeta 5 Power Act



Zeta 5 Power Act

Zhermack offers high performance products for impression disinfection: broad spectrum of action, according to the latest European Norms validated on disinfection, and high compatibility with different types of impression material.

Zeta 7 Spray is a ready to use disinfectant for a quick and easy disinfection of impressions.

Zeta 7 Solution is a broad spectrum concentrated disinfectant.

Characteristics

- Broad spectrum of action developed and tested according to the latest European Norms validated on disinfection
- Compatibility with materials for the impression taking (addition and condensation silicones, alginate, polyether, polysulphide and polyvinyl)

Advantages

- **Efficacy:** broad protection for professionals in dental practices and laboratories
- **High performance:** respects the dimensional stability of impressions characteristics and their compatibility with gypsum and improves accuracy in the reproduction of gypsum models



Zeta 7 Spray



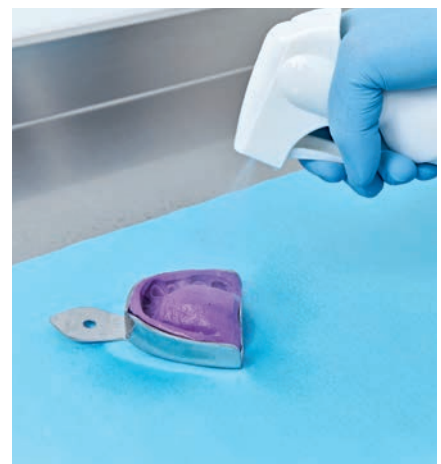
Zeta 7 Spray



Zeta 7 Solution



Zeta 7 Solution



Zeta 7 Spray



Product	Type of product	Active ingredients	Dilution	Action time	Distinctive characteristics	Spectrum of action
Zeta 7 Spray	Disinfectant	Alcohols	Ready to use	3 minutes	Improve smoothness of gypsum on impressions surfaces and reduce the formation of bubbles	Bactericidal: EN 13727 (S. aureus, P. aeruginosa, E. hirae) Yeasticidal: EN 13624 (C. albicans) Tuberculocidal: EN 14348, EN 14563 (M. terrae) Virucidal: EN 14476 (Poliovirus, Adenovirus, Parvovirus, Norovirus including HIV, HBV, HCV) Tests carried out in dirty conditions.
Zeta 7 Solution	Disinfectant	Quaternary Ammonium Salts, Phenoxyethanol	1 %	10 minutes	Concentrated, allows for the preparation of up to 100 litres of disinfectant solution	Bactericidal: EN 13727 (S. aureus, P. aeruginosa, E. hirae) Yeasticidal: EN 13624 (C. albicans) Tuberculocidal: EN 14348 (M. terrae) Virucidal against enveloped viruses: EN 14476 (Vaccinia Virus including HIV, HBV, HCV) Tests carried out in dirty conditions.

Algitray | Gypstray

Cleaners for the removal of trays and instruments alginate and gypsum residues

Hygiene / Special applications

Algitray and **Gypstray** are ideal for the cleaning and removal of alginates and gypsum residues from trays and instruments. Guarantees deep cleaning action even in less accessible areas, with respect for treated materials.

Algitray is a specific cleaner, free of phosphates and surfactants, for removing alginate residues from impression trays and other instruments.

Gypstray is a ready to use solution for the removal of gypsum residues from impression trays, spatulas or other instruments.

Advantages

- **Efficacy:** help remove traces of alginate and gypsum even in less accessible areas
- **Protection of materials:** non-aggressive formula



Algitray and Gypstray

Product	Type of product	Active ingredients	Dilution
Algitray	Cleaner for removing alginate residues	Alginate dissolvers	Soluble powder: 10 %
Gypstray	Cleaner for removing gypsum residues	Gypsum dissolvers	Ready to use





Hygiene

Hands

Zhermack products are non-aggressive to skin and offer deep cleaning for hand washing, an essential and frequently repeated practice.

Zeta 6 Hydra, enriched with nutrients, is protective and moisturising, respecting the skin and helping prevent irritation.

Zeta 6 Hydra 98

Zeta 6 Hydra is a delicate cleaner for frequent use on hands and sensitive skin.

Characteristics

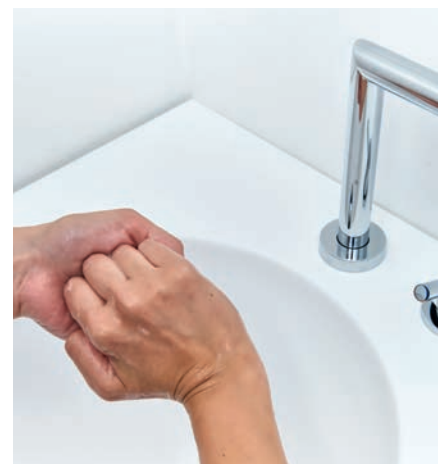
- Gentle on the skin and enriched with skin-protecting substances and nutrients
- Contains a mix of vegetable substances with nourishing and moisturising properties

Advantages

- **User comfort:** products ideal for the user hands care and cleaning



Zeta 6 Hydra



Zeta 6 Hydra





Ordinary, surgical dental instruments and burs disinfectants and sterilizers

Code	Product	Packaging
C810000	Zeta 1 Ultra	1 litre bottle
C810012	Zeta 2 Enzyme	1200 g container with dosing spoon
C810011	Zeta 2 Sporex	900 g container with dosing spoon

Medical devices surfaces disinfectants and cleaners

Code	Product	Packaging
C810023	Zeta 3 Soft	750 ml bottle with nozzle trigger spray
C810024	Zeta 3 Soft	5 litres container (2 x 2.5 litres) with dosage cap
C810027	Zeta 3 Soft Classic	750 ml bottle with foamer trigger spray
C810028	Zeta 3 Soft Classic	5 litres (2 x 2.5 litres) container with dosage cap
C810025	Zeta 3 Foam	750 ml bottle with nozzle trigger spray
C810026	Zeta 3 Foam	3 litres container with dosage cap
C810063	Zeta 3 Wipes TOTAL	120 wipes tub
C810062	Zeta 3 Wipes TOTAL	120 wipes bag refill
C810064	Zeta 3 Wipes POP-UP	100 wipes soft pack
C810037	Zeta 4 Wash	3 litres container





Special applications Suction unit disinfectants and cleaners

Code	Product	Packaging
C810040	Zeta 5 Power Act	1 litre bottle



Special applications Impressions disinfectants

Code	Product	Packaging
C810050	Zeta 7 Spray	750 ml bottle with foam cap
C810048	Zeta 7 Solution	1 litre bottle



Special applications Cleaners for the removal of trays and instruments alginate and gypsum residues

Code	Product	Packaging
C400435	Algitray	1 kg container with dosing spoon
C400441	Gypstray	3 litres container



Cleaner for hand hygiene

Code	Product	Packaging
C810042	Zeta 6 Hydra	1 litre bottle with dosage cap
C810043	Zeta 6 Hydra	5 litres container with dosage cap

Zeta Roll

Sterilization rolls

Hygiene / Disposable

In order to completely fulfill the needs of users, Zhermack, has also included disposable products in its Zeta Hygiene line, to provide a complete response to user cleaning.

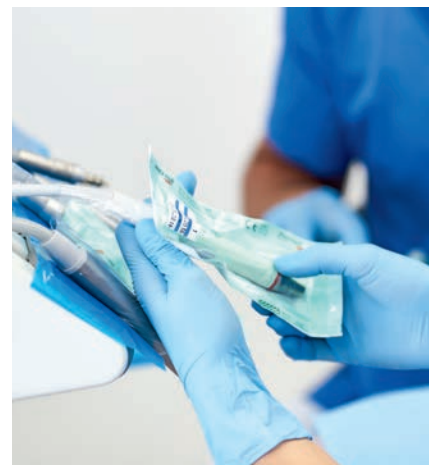
Zeta Roll are rolls for sterilization in autoclave.

Characteristics

- Compliant with standards EN 868, ISO 11140 and ISO 11607
- High tear and perforation resistance

Advantages

- **Efficacy:** high penetration of the vapour or gas sterilising agent
- **Protection:** high protection from microbes, thanks to the multiple reinforced side seams and uniform impermeable channels
- **User comfort:** clear indication of successful sterilization with evident colour change of the vapour and gas process indicators



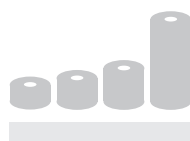
Zeta Roll



Zeta Roll

Disposable Rolls for autoclave sterilization

Code	Product	Packaging
C811010	Zeta Roll	50 mm x 200 m sterilization rolls
C811020	Zeta Roll	75 mm x 200 m sterilization rolls
C811030	Zeta Roll	100 mm x 200 m sterilization rolls
C811040	Zeta Roll	250 mm x 200 m sterilization rolls



Sterilization bath

Sterilization bath for surgical and rotating dental instruments, impression trays and impressions cleaning and carriage, with capacity up to 1 litre:

- resists chemical sterilizers
- the basket lifting up ensures the drying of the instruments
- size (L x D x H): 260 x 80 x 110 mm

Recommended for:

alginate and gypsum removal from impression trays, with Algitray and Gypstray





Alginate
Hydracolor S
Hydrogum S
Orthoprint
Tropicalgin
Phase Plus
Neocolloid
Prog. 1
Prog. 2
Prog. 3
Mixing Time 25 sec

Dental St
Elite R
Elite R
Elite R



Equipment

A good quality mixing is essential to obtain an impression that contains clear and precise information in order to facilitate the work of the dental technician, thus making the professionals time more efficient and increasing the satisfaction of the patient, who will not need to go back to the dental surgery for a second impression.

The Zhermack equipment is engineered to simplify and accelerate the mixing of the main impression materials.





Equipment

Mixers for impression systems

Mechanical or automatic mixing quality is considerably better and faster than manual mixing, allows for greater flexibility in the organization of the work within the practice and helps to better achieve the established results.

MX-300 is the automatic mixer for alginates, which produces a creamy and homogeneous mixture. Sympress is the automatic mixer for impression materials in the 5:1 system, which makes the mixing excellent and reduces wastage of material.

MX-300 108

Sympress 110

MX-300

Automatic mixer for alginates

Equipment / Mixing for impression systems

The **MX-300** is an **automatic mixer** for alginates that significantly improves the quality of the mix compared to manual mixing, helps standardise the mixing process and gives consistent, reproducible results. ^[1, 2, 3]

Easy, fast and consistent mixing, helps boost efficiency in the dental surgery.

The **MX-300** has been tested with the Zhermack range of alginates to identify the best mixing times for each alginate and to guarantee product technical characteristics.

Characteristics

- Compact mixer with reduced footprint on the worktop
- High speed centrifugal rotation, 3600 rpm. Double movement: rotation and revolution.
- Modern design with touch controls and limited presence of undercuts
- Digital colour display with mixing state icons
- Painted metal shell
- Mechanical lock prevents opening during mixing
- Mixing time memory (from 1 to 20 secs)
- Standard equipment:
 - 1 spatula, 4 mixing bowls, 1 stirring stick, 1 water dosing bottle, 1 handy magnetic spatula holder for application to the mixer

Advantages

- Automatic mixing significantly reduces the number of bubbles in the mix and produces a more homogeneous compound ^[1, 2]
- Reproducible results irrespective of who does the mixing ^[3, 4]
- Modern, compact design for a reduced footprint on the worktop
- Digital display and shell with limited presence of undercuts for easy cleaning



MX-300



MX-300

Code	Model	Dimensions (W x L x H - mm)	Weight (kg)	Mains voltage (V/Hz)
C305170	MX-300 230 V	300 x 205 x 245	17	230 V / 50/60 Hz
C305171	MX-300 115 V	300 x 205 x 245	17	115 V / 50/60 Hz
C305172	MX-300 for UK	300 x 205 x 245	17	230 V / 50/60 Hz

MX-300

Accessories - Standard equipment

Equipment / Mixing for impression systems

XR0251254



Power cable

XR0251231



Spatula

XR0251230



4 mixing bowls

XR0251232



Stirring stick

XR0251234



Water dosing bottle

XR0251233



Magnetic basket



[1] Inoue K, Song YX, Kamiunte NO, Oku J, Terao T, Fujii K. Effect of mixing method on rheological properties of alginate impression materials. Journal of Oral Rehabilitation, 2002; 29: 615-619.

[2] McDaniel TF, Kramer RT, Im F, Snow D. Effects of mixing technique on bubble formation in alginate impression material. General Dentistry, 2013; 61(6): 35-39.

[3] Internal test

[4] Presley S, Morgan J. The Selection, Use and Accuracy of Alginate Impression Materials. Dental Learning – a peer reviewed publication, 2015; 3(3): 23-30.

Sympress, the automatic impression materials mixer with a 5:1 mixing ratio, offers high performance, excellent quality and functionality. It mixes all Zhermack products in 5:1 ratio (putty, heavy body and monophase) and is compatible with the main 5:1 systems available on the market.

The mixing with Sympress is easy, constant and of higher quality than manual mixing. The mixing phase is notably reduced to give more product working time, which simplifies the work of the professional. Compact and linear design which guarantees reduced encumbrance upon working surfaces. The transparent plastic cover allows immediate viewing of the material being used and the level of material remaining in the cartridge.

Characteristics

- Ergonomic and compact design
- Two speed dispenser buttons
- Cartridge level indicator
- Available in countertop or wall-mounted versions
- Compatible with main 5:1 systems currently available on the market (VPS and polyether)

Advantages

- Double speed automatic mixing combined with the innovative Zhermack dynamic-static mixing tip guarantees the maximum mixing uniformity while maintaining unchanged the reactivity of the product
- Patented tip of Zhermack 5:1 mixing systems reduces material waste of 18% in comparison to the traditional mixing tips*
- High versatility thanks to its compatibility with the most common impression materials on the market
- 3 year warranty



Sympress



Sympress and Hydrorise Putty

Code	Model	Size (H x W x L – mm)	Weight (kg)	Power supply (V/Hz)	Total power (W)
6000-0000	Sympress – 230 V	330 x 190 x 380	7	230 V ± 10% / 50 Hz	170
6000-1000	Sympress – 120 V	330 x 190 x 380	7	120 V ± 10% / 60 Hz	170
6000-2000	Sympress 230 V plug UK	330 x 190 x 380	7	230 V ± 10% / 50 Hz	170
6000-3000	Sympress 100 V	330 x 190 x 380	7	100 V ± 10% / 50 – 60 Hz	170

Accessories

Code	Description
6000-0100	Wall mounting kit

*Internal Zhermack tests

For more information about usable products consult the following sheets on the site www.zhermack.com: Hydrorise, Hydrorise Implant, Elite HD+ and Freelgin.



Model casting

It often happens that the model needs to be cast directly in the practice to reproduce the state of the patient's dentition for diagnostic purposes. This allows to assess the most suitable orthodontic treatment or prosthesis, or even only to check the occlusion. To obtain the maximum precision, you can find within the wide range of Zhermack gypsum the one that is the most indicated for the applications of the dental practice.

Elite Rock is an extra hard stone for master models in fixed prosthesis applications. Thanks to its special formula optimised for reading with CAD/CAM systems, models made with Elite Rock in Silver Grey are scannable without using reflective sprays.

Elite Model is a dental stone indicated for making antagonists or study models.

Elite Ortho is a dental stone for the production of models for orthodontics and antagonists.

Elite Rock	200 g	1 kg	3 kg	25 kg carton	25 kg drum
Sandy Brown	C410033	C410032	C410030	C410200	C410334
Cream	-	-	C410020	C410201	C410332
Silver Grey	-	-	C410010	C410202	C410330
White	-	-	C410000	C410204	C410336

Elite Rock Fast	200 g	1 kg	3 kg	25 kg carton	25 kg drum
Sandy Brown	C410152	C410151	C410150	C410205	-
Cream	-	-	C410160	C410207	-

Elite Model	200 g	1 kg	3 kg	25 kg carton	25 kg drum
Steel Blue	-	C410071	C410070	C410221	-
Ivory	-	C410081	C410080	C410220	C410304

Elite Model Fast	200 g	1 kg	3 kg	25 kg carton	25 kg drum
Sky Blue	-	-	C410065	C410224	C410306
Light Cream	C410069	-	C410067	C410226	C410308
White	-	C410064	C410063	C410228	C410309

Elite Ortho	200 g	1 kg	3 kg	25 kg carton	25 kg drum
White	C410092	C410091	C410090	C410230	C410320

For further information about the whole range of Zhermack Dental Stones, please refer to the laboratory catalogue.



E F

Elite Cord
page 68

Elite Glass
page 52

Elite HD+ Light Body - Normal & Fast Set
Elite HD+ Maxi Monophase - Normal Set
Elite HD+ Maxi Putty Soft - Normal & Fast Set
Elite HD+ Maxi Tray Material - Fast Set
Elite HD+ Monopahse - Normal Set
Elite HD+ Putty Soft - Normal & Fast Set
Elite HD+ Regular Body - Normal Set
Elite HD+ Super Light Body - Fast Set
Elite HD+ Tray Material - Fast Set
page 36

Elite LC Tray
Elite LC Tray ROUND
page 67

Elite P&P Light Body
Elite P&P Putty Soft
Elite P&P Regular Body
page 40

Elite Soft Relining
page 64

Elite Stones
page 120

Freealgin
page 20

G H I

Gypstray
page 94

Hi-Tray Metal
page 66

Hydrocolor 5
page 14

Hydrogum
page 17

Hydrogum 5
page 14

Hydrorise Extra Light Body - Normal & Fast Set
Hydrorise Heavy Body - Normal & Fast Set
Hydrorise Light Body - Normal & Fast Set
Hydrorise Maxi Heavy Body - Normal & Fast Set
Hydrorise Maxi Monophase - Normal & Fast Set
Hydrorise Maxi Putty - Normal & Fast Set
Hydrorise Monophase - Normal & Fast Set
Hydrorise Putty - Normal & Fast Set
Hydrorise Regular Body - Normal & Fast Set
page 28

Hydrorise Implant Heavy Body - Normal Set
Hydrorise Implant Light Body - Normal Set
Hydrorise Implant Medium Body - Normal Set & Quick Set
page 32

Indurent Gel
page 46

A C

Acrytemp
page 74

Algitray
page 94

M N O

Mx-300
page 108

Neocolloid
page 15

Occlufast+
Occlufast+ Color
page 56

Occlufast CAD
page 57

Occlufast Rock
page 58

Oranwash L
Oranwash VL
page 46

Orthoprint
page 16

P S

Pinkalgin
page 17

Sympress
page 110

T U

Tropicalgin
page 17

Universal Tray Adhesive
page 69

Z

Zeta 1 Ultra
Zeta 2 Enzyme
Zeta 2 Sporex
page 82

Zeta 3 Foam
Zeta 3 Soft
Zeta 3 Wipes POP-UP
Zeta 3 Wipes TOTAL
Zeta 4 Wash
page 86

Zeta 5 Power Act
page 90

Zeta 6 Hydra
page 98

Zeta 7 Solution
Zeta 7 Spray
page 92

Zeta Roll
page 102

Zetalgin
page 18

Zetaplus
Zetaplus Soft
page 46

Fulfilling your needs