

THE DENTAL
SOLUTIONS
COMPANY™



Equipment catalogue

Treatment Centers, Instruments,
Imaging and CAD/CAM



Treatment Centers

The flagship of every practice

Modern treatment units are of crucial importance for the success and efficiency of treatment as well as for positive patient experience in all fields of dentistry.

Our treatment centers, well-known for their modern design and high quality materials, can be perfectly integrated into any practice network. They allow for the addition of numerous innovative functions to support integrated workflows in fields like endodontics and implantology. Smooth surfaces and integrated sanitation adapters ensure the highest possible hygiene standards. Ergonomic design ensures the optimal working position and workflow, enabling dental professionals to focus on providing the best, safest, and fastest care possible to their patients, no matter the practice.



INTEGO

Intego is the best treatment center of its class. It is based on the innovative power and award-winning design of our existing treatment centers. As a reliable partner for an efficient practice, Intego has all the features that provide optimal support: ergonomic design for better workflows, high quality standards in processing and design, and a great value – this is why Intego is our performance class.

- Great value
- Ergonomic design
- Quality made in Germany
- Treatment center with a compact water unit for optimal use of space
- EasyPad user interface for easy, intuitive operation
- Compact assistant element with good freedom of movement
- Controlled water quality with a self-contained fresh water supply bottle
- Available as the TS model with hanging hoses or CS with whip arms

INTEGO PRO

- Integrated, comprehensive hygiene concept for optimal results
- EasyTouch touchscreen and integrated foot control concept for easy, intuitive operation
- Flexible assistant element suitable for two- or four-handed treatment
- Numerous equipment options with a great value
- Available as the TS model with hanging hoses or CS with whip arms



INTEGO AMBIDEXTROUS

- Treatment center for right & left-handed dentists
- Due to the intelligent mechanism design, the treatment position can be switched in just 15 seconds
- The treatment center can be converted smoothly and effortlessly in a single flow. No jerky movements, no screws, no assembly



SINIUS

- Integratable treatment packages for implantology and endodontics
- Integrated hygiene function
- Individual price / performance ratio
- User-friendly EasyTouch interface
- Choice of three treatment concepts that fit your personal methods

TENEO

- Motoric sliding track
- Motoric headrest
- Motoric cuspidor
- 7" EasyTouch display
- 6 + 1 instrument positions
- Endodontics and implantology function
- ErgoMotion and OrthoMotion
- Massage and lumbar-support function
- Lounge upholstery

Instruments

Whether you cover the entire dental treatment spectrum or a special field, you can fully trust the instrument portfolio of Dentsply Sirona.

Turbines



PREMIUM CLASS

- Ergonomic lightweight titanium sleeves with comfortable grip
- DLC coated ceramic ball bearings
- Control function - continuous, quiet operation
- Suitable for all common quick-coupling versions (Click & Go)
- The 4-nozzle spray makes the T1 turbines the quietest in their class
- 2 years warranty



COMFORT CLASS

- Excellent grip thanks to the titanium-coated exterior sleeve
- Robust ceramic ball bearings
- Control function - continuous, quiet operation
- Suitable for all common quick-coupling versions (Click & Go)
- Economical replacement of the rotor cartridge by the user
- Low noise level: T2 turbines with 4-nozzle spray
- 2 years warranty



ECONOMY CLASS

- Suitability for all common quick-coupling or fixed connection
- A low-vibration clamping system
- Double back-suction stop (protective head system)
- Robust ceramic ball bearings
- Hygienic: can be sterilized and thermally disinfected
- 1 year warranty



Straight and contra-angle handpieces

PREMIUM CLASS

- Ergonomic lightweight titanium sleeves with comfortable grip
- Longer service life thanks to DLC coated ball bearings
- Adaptability to motors with light thanks to the ISO Slider®
- Head diameter only 8.7 mm
- Optimal illumination for an excellent view
- 3-year warranty



COMFORT CLASS

- A universal ISO interface
- Ergonomic lightweight titanium sleeves
- Optimal illumination for an excellent view
- Adaptability to motors with light thanks to the ISO Slider®
- Available also in shorter version – S-Line
- 2-year warranty



ECONOMY CLASS

- Universal ISO interface
- Extremely robust titanium sleeves
- Perfectly hygienic: can be sterilized and thermally disinfected
- Available also in shorter version – S-Line
- 1-year warranty



Contra-angle handpieces: red (1:5), blue (1:1) and green (6:1)
Straight handpiece: 1:1

DLC

DIAMOND-LIKE CARBON

INCREASED DURABILITY
OF COMFORT CLASS
CERAMIC BALL
BEARINGS

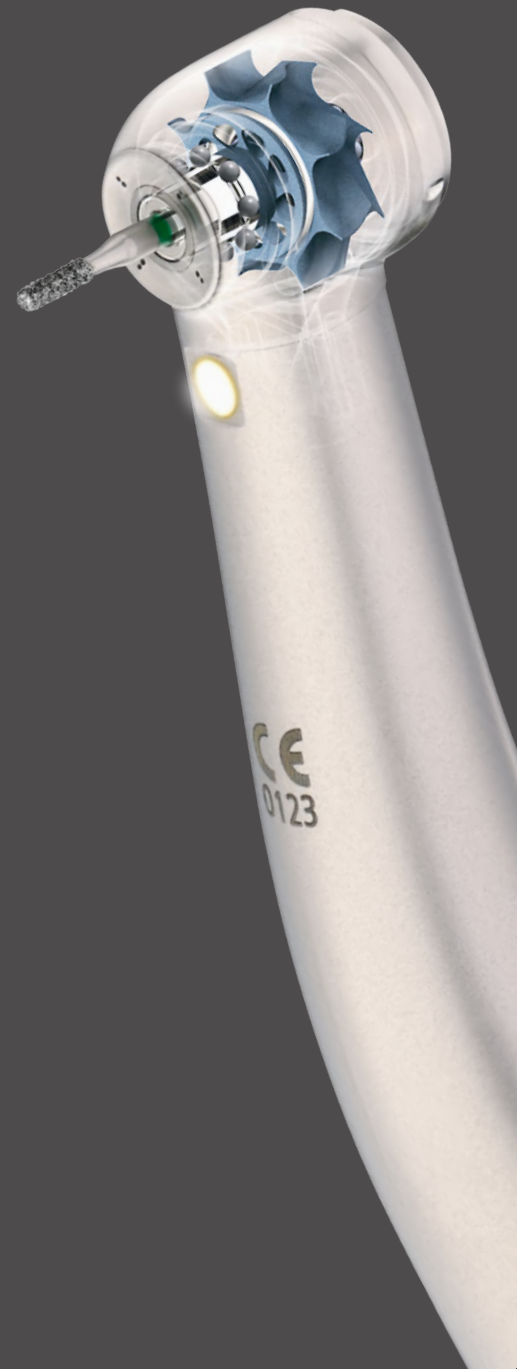


Table top devices

DAC Universal

An autoclave for dental instruments, that automatically cleans, lubricates and disinfects/sterilizes turbines, straight and contra-angle handpieces.

- Easy to use
- Reduced risk of damaging instruments
- Internal cleaning with cold water
- Fully automatic lubrication system
- External cleaning with hot and cold water
- Sterilisation and drying



SiroInspect

- The FACE technology (Fluorescent Aid Caries Excavation)
- Immediate caries detection
- Minimally invasive diagnosis
- Easy to use
- Wireless



SIROLaser Blue

- Dental diode laser
- Innovative blue laser 445 nm
- Non-contact cutting
- Sterile fiber tips
- Three wavelengths 445/660/970 nm
- Surgery, endodontics, periodontology, biostimulation
- Wireless
- Touchscreen
- Default settings for treatments



reddot award 2016
winner



for SIROLaser Blue handpiece



The confidence needed for your daily diagnostics

Your intraoral X-ray unit is the cornerstone of your daily diagnostic work. With Heliident Plus from Dentsply Sirona, you can not only expect great image quality, reliability and ease-of-use, but an intraoral X-ray unit that integrates seamlessly into your practice and also with Dentsply Sirona sensors and scanners to deliver better, safer and faster intraoral diagnostics. Heliident Plus works with DC power supply, whilst Vario DG works with AC.



Heliident Plus

- Various installation options
- 0.4mm focal spot and vibration-free components
- Safe and intuitive operation
- Robust quality ensures durability

Vario DG

- 3 different arm length
- Wall or cart version
- 0.4mm focal spot for excellent image quality
- Easy installation, intuitive operation



XIOS XG Supreme USB/WiFi

33 lp/mm theoretical resolution and a 15 μ m pixel size delivering the industry-leading image quality without any waiting time caused by a developing process.

- USB or WIFI option for image transmission
- Easy-to-change cable
- 3 sensor sizes
- The dynamic sharpening slider in Sidexis 4 software for individually optimized images
- 5 years sensor warranty



XIOS Scan

Xios Scan provides a gentle, easy introduction into the world of digital X-ray imaging. You can experience many of the advantages of digital imaging without a darkroom and chemicals while your team continues its regular workflow.

- 4 plates sizes for easy selection
- Scratch free handling
- High image quality with 22lp/mm resolution



The 2D X-ray Family

Be safer. See more – with ideal balance

The Orthophos 2D X-ray family offers the right solution for every practice. From the entry into digital radiography to the perfect solution for your area of specialization – Dentsply Sirona has a well-designed product family following your needs. Dentsply Sirona imaging units stand out for their simple. Operation and positioning, thus providing efficient workflows. The units are supplied with the Dentsply Sirona Imaging software, Sidexis 4, to deliver better, safer and faster diagnostics. The unprecedented image quality allows for extremely precise diagnosis and planning. With Dentsply Sirona, you trust a global brand with hundreds of thousands of units in practice distinguished by their Made in Germany quality.

Orthophos XG 3

Well-equipped unit for everyday practice life with easy operation reliable positioning and high image quality.

- 9 programs, including pediatric, bitewing and TMJ programs
- Seamless integration into your practice with easy operation and reliable patient positioning
- High image quality thanks to CSI sensor technology
- bite block high between 80-185cm

Orthophos XG 5

Wide variety for perfect results: With additional programs, the Orthophos XG 5 offers more diagnostic options. The optional ceph arm makes all important views available to orthodontists.

- 12 programs plus optionally 5 ceph programs
- Optional ceph arm for orthodontist



Ready for the future: 3D upgradable 2D units



Orthophos XG 3D Ready

Just a small step to 3D: With Orthophos XG 3D ready, the range of services can be expanded with a 3D module at any time. The benefit: additional investment security and confidence, just in case you, i.e. want to offer implantology in your practice at a later stage.

- Optional ceph arm on left or right side of the unit
- Automatic patient positioning thanks to the patented occlusal bite block
- Easy and convenient operation on the touch EasyPad
- Wide range of different programs e.g. bitewing, pediatric, sinus or collimated panoramic programs

Orthophos SL 2D

The Orthophos SL is the latest member of the successful Sirona 2D x-ray family. It wins points for functionality, quality and design. With the DCS sensor you have the most innovative sensor technology at your disposal, delivering high resolution images with a unique level of sharpness.

- DCS (Direct Conversion Sensor) images for efficient and reliable diagnosis
- Automatic positioning aids optimize your practice workflow
- Sharp Layer (SL) technology automatically adapts the panoramic curve for the entire jaw to be always in the sharp layer
- 3D upgradable, optional ceph arm on left/right side



reddot award 2015
winner



The 3D X-ray Family

See More. Do More

Whether you opt for our flagship solution featuring some really revolutionary technologies (Orthophos SL 3D) or the most popular 2D/3D hybrid unit worldwide (Orthophos XG 3D), you can always rely on best image quality at the lowest dose for better, safer, faster dentistry. Combined with the Dentsply Sirona Imaging software Sidexis 4 you enrich your practice with a variety of treatment solution options in several fields of specializations, i.e. implantology, endodontics and sleep apnea treatment.

Orthophos XG 3D

Optimized for daily tasks in the practice: The world's most popular hybrid unit Orthophos XG 3D combines 2D and 3D with a maximum volume of 8 cm x 8 cm, Orthophos XG 3D is perfectly adapted to fit the needs of any practice: One scan is sufficient for capturing the entire jaw.

- 2D/3D hybrid unit gives freedom for any kind of diagnosis
- From 5x5,5cm "endo" volume up to 8x8cm cylindric volume between 100-160 micron resolution
- Standard and High Definition (HD) mode
- Integrated solutions, e.g. integrated implantology with Cerec/inLab system, 3D Endo solution, SICAT Air or SICAT Function
- Optional ceph arm on left/right side



Galileos Comfort Plus

The Galileos Comfort Plus is the comprehensive package to meet the highest of demands with an extremely low dose and unparalleled reliability. At the same time the optionally integrated Facescanner offers every practice extremely up-to-date patient advice.

- Pure 3D device up to 15,4x154cm spherical volume
- Standard or High Definition (HD) mode
- Optional FaceScan
- Integrated solutions e.g. integrated implantology with surgical guide, 3D Endo solution, SICAT Air or SICAT Function

Orthophos SL 3D

The true all-in-one imaging unit.

With the Orthophos SL, your practice is extremely well prepared for various treatment situations. On the 2D side, the groundbreaking DCS sensor and SL technology satisfy the requirements of practitioners with very high demands for panoramic imaging. In 3D, you can decide (now or later) between the 8 cm x 8 cm or 11 cm x 10 cm volume unit. Both units offer a variety of collimations.

In combination with the pioneering Sidexis 4 imaging software, the Orthophos SL gives you access to a variety of innovative treatment solutions. Orthophos SL 3D can be equipped at any time with a cephalometric arm. Patients appreciate the soothing Ambient Light, which offers a choice of over 30 colors for a pleasant atmosphere in your X-ray room that fits perfectly into the look of your practice.

- From 5x5,5 cm up to 11x10cm cylindric volume between 80-160 micron resolution
- 2D side: DCS and Sharp Layer technology for the excellent image quality for reliable diagnosis
- Easy Volume Indicator (EVI) light indicator automatically indicates the patient's position in the volume
- Integrated solutions including planning surgical guides, 3D Endo, sleep apnea and/or TMJ disorder diagnosis and treatment plans thanks to SICAT solutionPantomografia: wszystkie funkcje aparatu Orthophos SL 2D



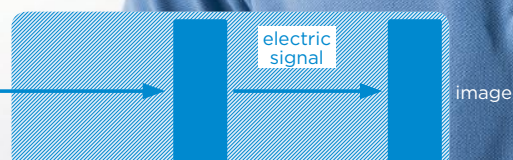
reddot award 2015
winner



CSI SENSOR



X-RAYS



CEREC – Single visit dentistry

What would you think about providing your patients a crown in one visit instead of two? What would your patients think about it? We know – they would love that! Patients benefit from the faster, more comfortable treatment with no impression tray, no temporary and only one anesthetic injection. Offer your patients the best modern treatment – with CEREC!

Imagine that you could now offer your patients restorations in a single visit – with all conventional materials. And that you could also offer implantology and orthodontic treatment. What opportunities would that open up for your practice?

Efficiency, greater added value and safety: CEREC makes all this happen.

CEREC MC XL Premium Package

Complete spectrum of chairside and labside indications with block size up to 85 mm



CEREC SpeedFire

CEREC SpeedFire is the only dental furnace you need. It can sinter, glaze and crystallize all your materials.

CEREC Omnicam

Powder-free and in color.
And now OPEN to STL.



CEREC Omnicam

- Powder-free camera
- The colored scan ensures a natural looking digital model
- OPEN to STL
- Shade detection
- Unrivalled handling thanks to the slim design, the small camera head



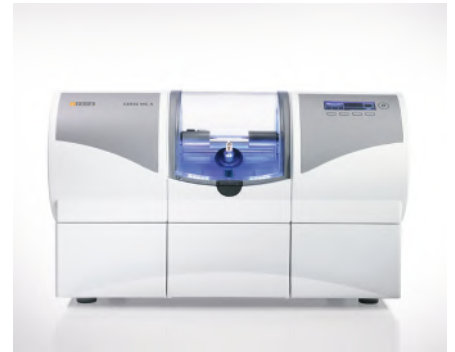
CEREC SpeedFire

- The smallest and fastest sintering furnace on the market
- 3 in 1 furnace – sintering, crystallizing, glazing
- Crown sintering 10-15 minutes
- Jobs sent automatically from CEREC SW
- Induction technology



CEREC MC X

- Entire range of chairside indications with up to 40mm block size, incl. bridges and abutment
- Presize and fast
- Optional upgrade with the CEREC Premium SW
- CEREC Guide 2 surgical guides



CEREC MC XL Premium Package

- Complete spectrum of chairside and labside indications with blocks size up to 85mm
- Grinding/milling of all CEREC & CEREC Premium indications and materials
- Presize and fast
- Four motors and user-friendly touch screen
- CEREC Guide 2 surgical guides
- Optional „extra fine” grinding



Sirona Connect – your direct link to the lab



CEREC AC Connect with Omnicam

Your trusted lab technician is directly connected to your CEREC system via the Sirona Connect internet portal. This saves your patients from the discomfort of conventional impressions even for indications you don't want to produce in a single session. Digital impressions with Sirona Connect perfectly complement CEREC particularly for veneered crowns and bridges. Sirona Connect Software that you need for sending impression data is pre-installed on your CEREC system. Sending data via Sirona Connect is free of charge.



CAI.

inEos X5

One scanner, all options



CAM.

inLab MC X5

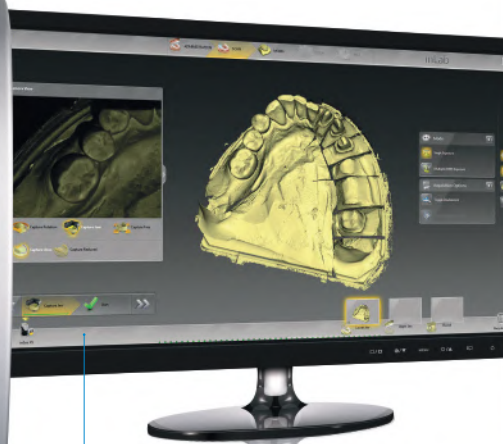
Greater freedom



CAD.

inLab SW 16.0

Your tools for efficient design



21051

inLab – dental lab freedom of choice

CAD/CAM with inLab – now you have freedom of choice for scanning, designing and fabrication. Your dental lab is all set for the future with new high-performance inLab components. Scanners, software and production units are now optimally coordinated and even more in tune with the dental technician's needs. Together they ensure the greatest variety of materials for a broad range of indications and user-friendly applications. In addition, Sirona Connect gives you access to the largest installed base of digital intraoral impression systems. inLab is open and STL interfaces permit flexibility when integrating existing CAD/CAM solutions for independent and cost-efficient production processes.

CAF.

inFire HTC Speed

for sintering zirconia and NPM



CAM.

inLab MC XL

Open for precision and speed

inEos X5

- 5-axis scanner
- Robotic arm
- High precision, large working area, intuitive workflow
- STL export
- No scan or annual fee



inLab SW

- Software is independent of the scanning and production
- Optimized design processes and user-friendly interface
- Four software modules cover the most important indications
- No dongle counters, no mandatory updates, no expiration date and no annual license fee

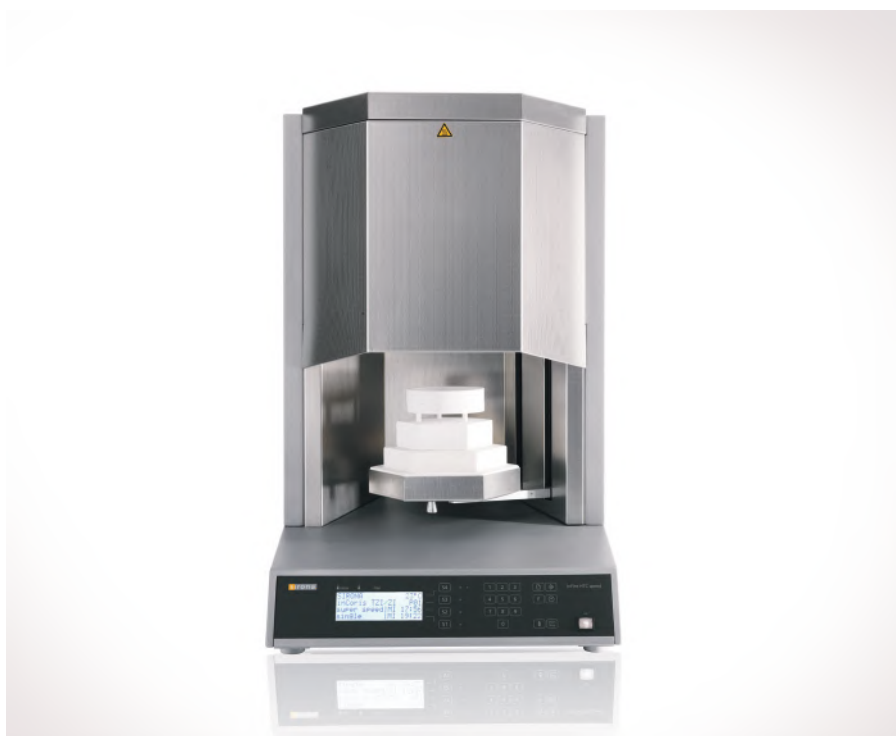


inLab MC X5

- 5-axis and universal production unit
- Milling from standard discs (ø 98.5 mm, up to 30 mm height) and discs
- Wet and dry production depending on the material and indication
- OPEN for STL import
- Milling of one-piece custom titanium abutments

inLab MC XL

- High speed 4-axis milling unit
- A fully contour crown from ceramic takes less than 10 minutes
- Grinding or milling blocks up to 85 mm
- OPEN for imported STL restoration data
- Wide selection of materials



inFire HTC Speed

- Sintering of zirconia and NPM
- Free programming for long term and speed sintering
- Simultaneous sintering of up to 60 units
- Just 10 minute for superspeed sintering of zirconia copings and crowns

THE DENTAL
SOLUTIONS
COMPANY™

