

Contact form
 By fax: +49 (0) 2451 971-410
 By phone: +49 (0) 2451 971-409
 E-Mail: info@garrisondental.net

I want to register my kit for the 60-day money-back guarantee.

Order: (will be supplied by your dealer)

Quantity	Part No.	Unit Price in €	Total Price in €

Please send me your Garrison Newsletter

per post

per e-mail

Practice _____

No. Street _____

Town/City _____

Postcode _____

Phone _____

E-Mail _____

Dental Depot _____

in _____

Date/Signature _____

CATEN2017



Garrison
Dental Solutions

Garrison Dental Solutions
 Carlstrasse 50
 52531 Uebach-Palenberg
 Germany
 Phone +49 (0)2451 971-409
 Fax +49 (0)2451 971-410
 E-Mail: info@garrisondental.net
 Web: www.garrisondental.com

CATEN2017

Composi-Tight. 3D Fusion™

NEW!



Composi-Tight. 3D XR



The best sectional matrix system now with
 the new 3D Fusion™ Bands for best results.

Garrison
Dental Solutions



Better, faster, more efficient

Dr. Martin von Sontagh, Hard, Austria

ZWP Zahnarzt Wirtschaft Praxis 7+8/14, S. 72-73, Oemus Media AG, Germany



1. Pre-operative situation showing carious lesions and old fillings in tooth 14 to 17.



2. Placement of a rubber dam, after the removal of the carious tissue.



3. Agitation of Adhese Universal with the help of the VivaPen™ after placing of the sectional matrix system.



4. Polymerization of the bonding agent for 20 seconds with Bluephase Style™.



5. The filling is replaced with only two increments of tetric EvoCeram Bulk Fill™.



6. Etching of the enamel for 30 seconds.



7. Placement of the filling with two increments.



8. The enamel tissue is etched with phosphoric acid for 30 seconds while the dentin tissue is etched for 15 seconds.



9. The Adhese Universal bonding agent is easy to dispense from the VivaPen..



10. The completed fillings smoothly blend into the dental arch, due to their natural-looking cusps and fissures.

You can find the complete case for download at www.garrisondental.com.

© by Ivoclar Vivadent AG

Tight, predictable flash-free contacts

Composi-Tight® 3D XR ☼

Sectional Matrix System



Excellent clinical results with PROVEN materials

Why use a sectional matrix system for Class II's?

Composi-Tight® 3D XR ☼

- Anatomically correct contacts
- Contacts at the height of contour
- Rings produce optimal tooth separation for excellent, tight contacts
- Naturally contoured bands
- Great results with an operator-friendly retaining system



versus

Tofflemire-style System

- Fails to restore proximal anatomy
- Thin contact at the marginal ridge
- Large food trap below
- Increased likelihood of fracture, occlusal interference, recurrent caries and periodontal disease



Better contacts, virtually ZERO flash with our Composi-Tight 3DXR system!

General Safety Notes

Warnings:

- Composi-Tight systems consists of small, sharp parts. Placement of rubber dam or other suitable isolation is advised prior to operative procedures. As with all intraoral instruments, care must be exercised to ensure stable handling and placement.
- Aspirati on: If aspirati on of matrix, wedge or retaining ring occurs seek immediate medical attention.
- Ingestion: If accidental swallowing occurs, encourage patient to seek medical assistance to locate swallowed part. If nausea or illness develop, seek medical attention immediately.

For full sterilization instructions please go to: www.garrisondental.com.

Garrison Dental Solutions • Carlstrasse 50 • D-52531 Uebach-Palenberg • Phone +49 (0) 2451 971-409 • Fax 02451 971-410 • info@garrisondental.net

Sterilisation and cleaning instructions for Composi-Tight 3D Rings

Sterilisation:

- Sterilise the product in the autoclave using only CE approved sterilisation pouches.
- Only sterilise in autoclave. Run at cycle of 132 – 134°C and 210kPa for 6 minutes with a drying time of 20-30 minutes; please follow the manufacturer's instructions when doing so. Never exceed temperatures of 137°C.
- DO NOT use chemical sterilisation processes.

Cleaning:

- Remove all visible residues prior to sterilisation.
- To do this, use a nylon brush or a similar soft brush. Be careful not to damage the Soft-Face silicone during the cleaning process.
- If visible residues are still present, please repeat the above procedure.
- DO NOT use solutions containing chemicals such as alcohol, acetone, ketone

table of contents

Matrix Systems

Matrix Bands	Composi-Tight® 3D Fusion™	3
	Slick Bands™ XR Bands	4
	Composi-Tight® Bands	4
	Composi-Tight® 3D Clear Bands	10
	Composi-Tight Gold® Bands	11
	Composi-Tight® Original-Bands	12
Composi-Tight® rings	Blue (3DXR), Orange (3D500), Gray (3D400)	5-6
	Transparent (3D600)	10
	Gold (AU400 und AU500)	11
	Original (G100 und G200)	12
Sectional Matrix Systems	THE BEST Composi-Tight® 3D XR	5-8/30
	Composi-Tight® 3D Clear	9-10
	Composi-Tight Gold® (AUK2)	11
	Composi-Tight™ Original (K102)	12
Anterior Matrix Systems	VariStrip™	16
Traditional Tofflemire-style	Slick Bands™ (Margin Elevation Bands)	17-19






Wedges

Plastic	3D Fusion™ Ultra Adaptive Wedges . NEW	7	
	WedgeWands®	13	
	A+Wedge™	14	
	G-Wedge™	15	
Wood	SoftWedge™	15	
Important Accessories			
Matrix Forceps	Matrix Forceps	20	
	Ring Placement Forceps	20	
	Universal Placement Forceps	20	
Composite Instruments	PerForm™ Contact Former	21	
	Multi-Function Non-Stick	22	
	Double Cord Packer	23	
	Composite Instruments	22-24	
Polishers	FitStrip™	25	
	eZr™ Polishers NEW	26-27	
Key-Opinion Leaders			
	Case Study	1	
	Statements of Garrison Users	28-29	
Sterilisation and cleaning instructions			31

All offers are valid until 31st December 2017 and are subject to availability. Errors and specifications subject to change without notice. All prices are subject to VAT.

Composi-Tight® 3D Fusion™

Full Curve Non-Stick Matrices

	premolars	premolars with deep cervical preparations	premolars and small molars	molars	molars with deep cervical preparations
3D Fusion™ Bands with Extensions					
0.038 mm thick					
part number	FX100	FX150	FX175	FX200	FX300
height	4.4 mm	6.0 mm	5.6 mm	6.6 mm	8.7 mm
amount per pack	100 pcs.	60 pcs.	100 pcs.	100 pcs.	60 pcs.

Composi-Tight® 3D Fusion™ Bands



... **FXB02** with 210 bands

All band sizes as a refill...

... **FXB01** with 420 bands

NEW!

Wrap it up - Full Curve bands wrap further around the tooth, out of the way, making ring placement easier.

Keep tabs on 'em - An occlusal placement Grab-Tab™ gives you excellent control with any placement instrument you choose.

Go deep or wide - Improved subgingival extensions and added wrap-around length mean improved results on those more challenging restorations.


Easy in - Their advanced curved form improves structural rigidity, making them our easiest-to-place band ever.

Easy out - 3D Fusion Full Curve matrices wouldn't be complete without the Slick Bands coating invented by Garrison.

Part No.	Content
FXB02	3D Fusion™ bands kit 210 pcs. (each 50 pcs. FX175 and FX200 and each 30 pcs. FX150 and FX300)
FXB01	3D Fusion™ Bands kit 420 pcs. (each 100 pcs. FX100, FX175 and FX200 and each 60 pcs. FX150 each FX300)







Slick Bands™ XR

Easier to place and
optimized for wider preps!

	Pediatric	premolars	premolars with deep cervical preps	premolars and small molars	molars	molars with deep cervical preps
Slick Bands™ XR Matrices have non-stick coating and Grab-Tabs™ for easier placement.						
0.038 mm thick						
part number	N/A	SXR100	SXR150	SXR175	SXR200	SXR300
height		4.6 mm	3.8 mm	5.4 mm	6.4 mm	6.4 mm
amount per pack		100 pcs.	60 pcs.	100 pcs.	100 pcs.	60 pcs.
Slick Bands™ XR Matrix Bands						

- The non-stick coating greatly reduces adhesion to bonding and composite materials
- Small grab tabs at the corners facilitate use of the matrices
- Improved shape is optimised for sub-gingival defects
- 5 different sizes, 3-dimensionally contoured and dead-soft

Composi-Tight 3D

	Composi-Tight® 3D bands are contoured in 3 dimensions.					
0.035 mm thick						
part number	M050	M100	M150	M175	M200	M300
height	3.2 mm	4.6 mm	3.8 mm	5.5 mm	6.4 mm	6.4 mm
amount per pack	50 pcs.	100 pcs.	50 pcs.	100 pcs.	100 pcs.	50 pcs.
Composi-Tight® 3D Matrix Bands						

- 6 different sizes, 3-dimensionally contoured and dead-soft
- 0.035 mm thin for tight contacts
- pre-curved for best anatomical shape

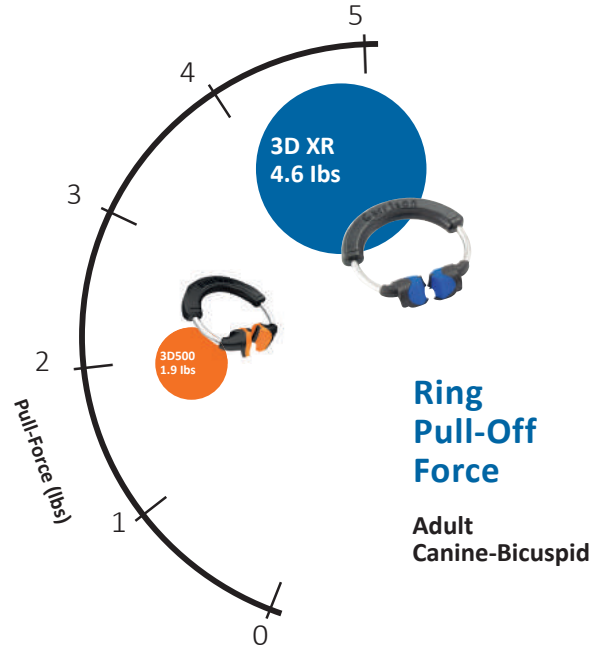


**Composi-Tight 3D XR:
Winner of the 2017 Top Sectional Matrix 5+
and 2013 Editors' Choice Awards**

The Dental Advisor – Top Sectional Matrix System
2013, 2014, 2015, 2016 and 2017 and Editors' Choice 2013.

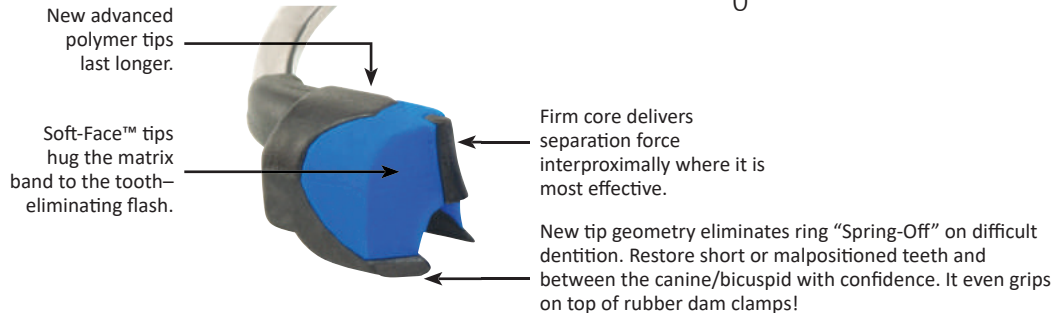
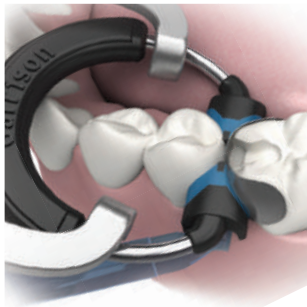


The Dental Advisor has selected the Composi-Tight Sectional
Matrix System as its Top Sectional Matrix System once again for
2017. The new 3D XR ring received the highest possible rating –
The Dental Advisor's coveted 5+ rating.



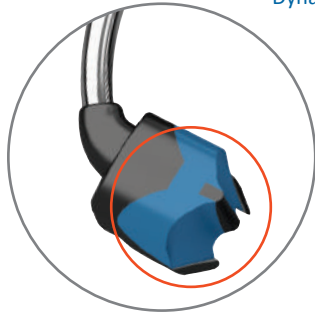
Perfect contacts with zero flash.

The new 3D XR Extra Retention ring delivers outstanding
performance even on difficult dentition and eliminates ring
"Spring-Off."



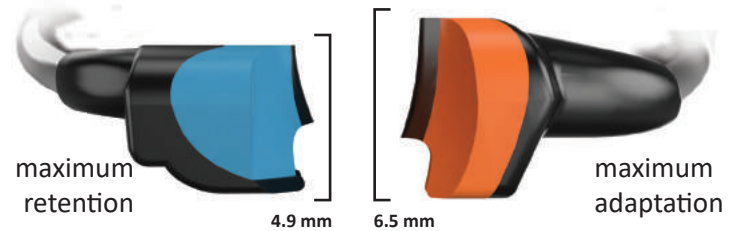
Composi-Tight® 3D XR

Upgrade to rings that won't "Spring-Off"!



Dynamic Tip Angle™ combined with retentive tip extensions adapts interproximally for an unsurpassed, tenacious grip!

Soft-Face™ tines hug matrix bands to the tooth for flash-free convenience!



The Composi-Tight® 3D XR Soft-Face™ Sectional Matrix Ring is an ultra-retentive matrix ring designed for use with short or malpositioned teeth, including areas between the canine and first bicuspid.

The orange Soft-Face™ 3D Ring provides maximum ease of placement and adaptation to a wide variety of tooth anatomies while reducing flash.

Please always use rubber dam and our ring placement forceps with all Garrison rings for secure handling.



Rings	Description	Qty.
3DXR	Soft-Face Extra Retention Rings (blue)	2 pcs.
3D500	Soft-Face 3D Rings (orange)	2 pcs.
3D400	Thin Tine G-Ring®	3 pcs.



Dr. Wolfgang Boer,
Euskirchen,
Deutschland

"The new, blue version of the clamp ring have proven to be a great benefit in my practice: not only do they hold for much longer than the traditional orange rings, but they also fit the teeth of young patients better. These days, I am using the blue clamp rings in approximately 80% of all cases and the traditional orange rings almost only on older or PA patients."

Composi-Tight® 3D Fusion™ Ultra Adaptive Wedges

NEW!

Combining Soft-Face™ adaptive materials, a firm inner core and advanced mechanical features to produce a wedge that truly works. **Every time.**

3D Fusion™ Wedges



3D Fusion™ Wedges

Kit	Description	Qty.
FXK4-M	3D Fusion™ Wedge Kit (50 each color)	200 pcs.
Refills		
FXYL	X-Small Yellow Refill	100 pcs.
FXBL	Small Blue Refill	100 pcs.
FXOR	Medium Orange Refill	100 pcs.
FXGR	Large Green Refill	100 pcs.

Tough on the inside.
The firm inner skeleton allows for easy insertion and tooth separation just like a traditional wedge.

A real softie.
3D Fusion's Soft-Face™ over-mold allows the wedge to do what no other wedge can truly do – actually adapt to interproximal irregularities.

Get a grip.
The universal gripping block gives you absolute control of the wedging process whether you're using a cotton pliers, hemostat or "pin" tweezers. Use what you like – 3D Fusion™ has you covered.

Fins done right.
Soft retentive fins smoothly fold down during wedge insertion and then spring back when clear of the interproximal space. Wedge back-out is a thing of the past.

No pain – all gain.
The upturned ski-like tip and soft radius edges glide over the rubber dam or papilla for trauma free insertion.

Keep it clean (and dry!)
3D Fusion's patent pending design easily follows the contours of the teeth sealing things up nice and tight while preventing overhangs.



THE BEST

Composi-Tight® 3D XR

3DXR delivers outstanding performance even on difficult dentition.

NEW!



3DB-KFF-00

All kits come with a 60-day-money-back-guarantee. Please register your kit today by phone +49 (0) 2451 971-409, email to info@garrissidental.net or send us your order form via fax +49 (0) 2451 971-410.

If you need assistance on the right kit for you please call +49 (0) 2451 971-409

3DB-KFF-00 Starter-Kit

- 2 Soft Face™ 3DXR rings for an extremely secure grip (blue)
- 1 Soft Face™ 3D ring for perfect adaptaion (orange)
- 100 3D Fusion™ Bands, assorted, NEW!**
- 100 3D Fusion™ ultra adaptive wedges, assorted
- 1 Ring placement forceps

Sectional Matrix System

-8-



Kits

Descripton

3D-KFF-01	1x	Soft Face™ 3DXR ring
	2x	Soft Face™ 3D rings
	100x	3D Fusion™ Bands, assorted,
	100x	3D Fusion™ ultra adaptive wedges,
	1x	Ring placement forceps,
	1x	Matrix Forceps BFA-1 (page 20)
	1x	Multi-function Instrument TN009 (page 22)
3D-MFF-00	1x	Soft Face™ 3DXR ring,
	1x	Soft Face™ 3D ring,
	40x	3D Fusion™ bands, assorted,
	80x	3D Fusion™ ultra adaptive wedges,
	1x	Ring placement forceps

For other kit configurations, call us on +49 (0) 2451 971-409 or go to www.garrissidental.com.



Composi-Tight® 3D Clear

Cure-through sectional matrix system

This system combined transparent and translucent materials to allow for trans-enamel polymerization. Now clinicians can apply their curing light from both the buccal and lingual surfaces without interference from metal matrix bands and opaque separator rings. This easily allows for proper curing of deeper proximal boxes and is also beneficial for clinicians bulk-filling Class II restorations.

"...I am particularly impressed with how the 3D Clear matrix bands wrap so cleanly around the tooth and help form the marginal ridge."



John E. Garrison, DDS

Sectional Matrix System 3D-KCC-01 Kit:

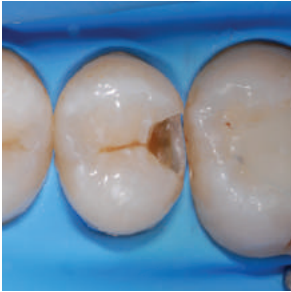
Includes:

- 1 New Composi-Tight™ 3D XR Ring (Blue)
- 2 3D600 Clear Soft-Face™ Rings (translucent)
- 100 Cure-Through matrices (30 ea. MC100, MC200; 40 ea. MC175)
- 100 Cure-Through Wedge Wands® (25 ea. size)
- 1 Improved Ring Placement Forceps
- 1 Matrix Forceps (BFA-1)
- 1 Multi-Function Composite Instrument (TN009)

Kits	Description
3D-KCC-01	3D CLEAR System Kit (shown)
3D-KCC-00	3D CLEAR System Kit This kit includes everything listed above EXCEPT the matrix forceps and TN009



All kits come with a 60-day-money-back-guarantee. Please register your kit today by phone +49 (0) 2451 971-409, by email to info@garrisdental.net or send us the order form via fax +49 (0) 2451 971-410.

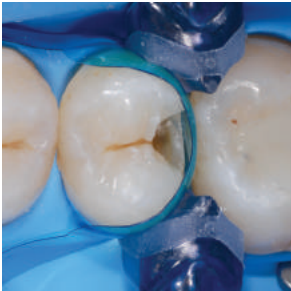


Rings:

The clear separator ring (3D600) is a special modification of the very popular Soft-Face™ 3D ring (3D500). It features the same tooth hugging soft silicone tip design that virtually eliminates buccal and lingual flash. One 3D XR blue (non-transparent) ring is included in the kit for extra retention on difficult dentition.



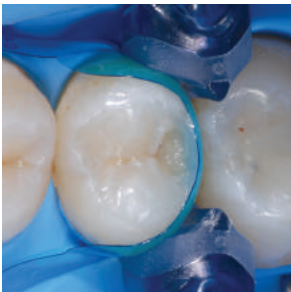
Rings	Description	Qty.
3D600	CLEAR Soft-Face (translucent)	2 pcs.
3DXR	Soft-Face Extra Retention Ring (Blue)	2 pcs.



Bands:

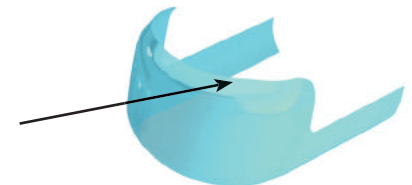
Composi-Tight 3D Clear matrix bands are 0.05 mm thin and come in three heights. The bands have tabs on the gingival edge to facilitate easier placement and are contoured in three dimensions. Additionally, the curvature is enhanced at the marginal ridge to provide improved anatomy.

Composi-Tight 3D Clear 0.05 mm thick	MC100	MC175	MC200
Most commonly used for:	premolar 5.0 mm	bicuspid and small molars 5.9 mm	tall molar 6.8 mm



Bands	Description	Qty.
MC100	Premolar Matrix Bands	100 pcs.
MC175	Bicuspid and Small Molar Bands	100 pcs.
MC200	Tall Molar Matrix Bands	100 pcs.

Better contour at the marginal ridge



Composi-TightGold®

Sectional Matrix System AUK2 - Gold Kit:

The second generation Composi-Tight System still loved by many dentists.



Dr. Martin Able,
USA

"Composi-Tight Gold is a great matrix, now even better for predictable tight contacts with anatomical contours. This is the benchmark for contemporary dentistry and composite restorations.

There are some dental products which I can't practice without. Composi-Tight Matrices and Wedge Wands are two such products."



AUK2

Kit	Description	Qty.
AUK2	Gold System Kit w/Forceps (shown)	

G-Ringe™	Description	Qty.
AU400	G-Rings™ Standard Length Tines	3 pcs.
AU500	G-Rings™ Long Length Tines	3 pcs.

Bands	Description	Qty.
AU050	Pediatric Matrix Bands	50 pcs.
AU100	Premolar Matrix Bands	100 pcs.
AU100-M	Premolar Matrix Bands, small pack	50 pcs.
AU150	Premolar w/Ext Matrix Bands	50 pcs.
AU200	Tall Molar Matrix Bands	100 pcs.
AU200-M	Tall Molar Matrix Bands, small pack	50 pcs.
AU300	Tall Molar w/Ext Matrix Bands	50 pcs.
AUMRDF-100	Ring Placement Forceps	



AU400



AU500

Composi-Tight Gold 0.035 mm thick	AU050	AU100	AU150	AU200	AU300
Most commonly used for:	pediatric	premolars	premolars with deep cervical preparations	molars	molars with deep cervical preparations
height	3.2 mm	4.6 mm	3.8 mm	6.4 mm	6.4 mm
amount per pack	50 pcs.	100 pcs.	50 pcs.	100 pcs.	50 pcs.

AUK2 Includes:

- 250 Matrix Bands (100 ea. AU100, AU200; 25 ea. AU150, AU300)
- 6 G-Rings (3 standard, 3 long)
- 1 Ring Placement Forceps

Composi-Tight™

Sectional Matrix System K102 - Original Kit:

Our original system that set the standard for tight, anatomical contacts.



Kit	Description	Qty.
K102	Original Kit w/Forceps (shown)	

G-Ringe™

G100	G-Ringe™ Standards	3 pcs.
G200	G-Ringe™ Long Length Tines	3 pcs.

Bänder

B050	Pediatric Matrix Bands	50 pcs.
B100	Premolar Matrix Bands	100 pcs.
B100-M	Premolar Matrix Bands, <small>small pack</small>	50 pcs.
B150	Premolar w/Ext Matrix Bands	50 pcs.
B200	Tall Molar Matrix Bands	100 pcs.
B200-M	Tall Molar Matrix Bands, <small>small pack</small>	50 pcs.
B300	Tall Molar w/Ext Matrix Bands	50 pcs.

AUMRDF-100 / MRDF-100 Ring Placement Forceps



K102 Includes:

- 225 Matrix bands (100 ea. B100, B200; 25 ea. B300)
- 7 G-Rings (4 standard, 3 long)
- 1 Ring Placement Forceps

K102 - Original kit:

Composi-Tight™ Original 0.035mm thick	B050	B100	B150	B200	B300
Most commonly used for:	pediatric	premolars	premolars with deep cervical preparations	molars	molars with deep cervical preparations
height	3.2 mm	4.6 mm	3.8 mm	6.4 mm	6.4 mm
amount per pack	50 pcs.	100 pcs.	50 pcs.	100 pcs.	50 pcs.

WedgeWands

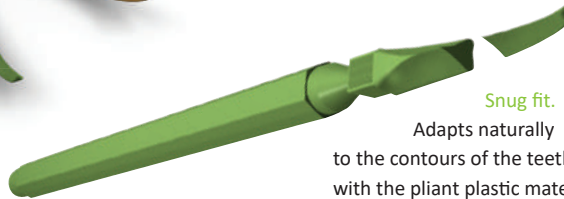


Opaque



Stays put. Back-out is prevented by the textured wedge body and gradual side taper.

Gentle touch. The ski-like tip prevents the wedge from digging into the rubber dam or papilla during insertion, and the soft radius edges prevent trauma during insertion and removal.



Snug fit.
Adapts naturally to the contours of the teeth with the pliant plastic material.

A sure seal. Every angle and plane is a continuous curve to mimic interproximal anatomy.

Wedge Wands® Opaque

Kit	Description	Qty.
WK4	Wedge Wands™ Kit 400 pcs / 100 ea. size	400 pcs.

Refills		
SWYL	X-Small Yellow Refill	100 pcs.
SWBL	Small Blue Refill	100 pcs.
SWOR	Medium Orange Refill	100 pcs.
SWGR	Large Green Refill	100 pcs.

WedgeWands

Cure-Through



Wedge Wands® Clear

Kit	Description	Qty.
WCK4	Clear Wedge Wands™ 400 pcs / 100 ea. size	400 pcs.

Refills		
SWCYL	X-Small Yellow Refill	100 pcs.
SWCBL	Small Blue Refill	100 pcs.
SWCOR	Medium Orange Refill	100 pcs.
SWCGR	Large Green Refill	100 pcs.

The NEW



The all new A+ Wedge controls gingival bleeding

making restorations cleaner and quicker. In addition to adapting naturally to the contours of the teeth and mimicking interproximal anatomy, the A+Wedges are coated with aluminum sulfate that has an astringent effect on the gingiva. The wedges are designed to prevent back-out and are long enough to allow for proper matrix ring placement.

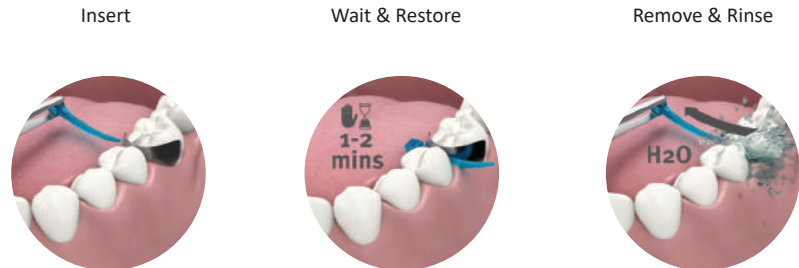
A+Wedge's astringent coating prevents bleeding while the continuous curve design reduces trauma



- Controls gingival bleeding
- Improves clarity of restoration area
- Eliminates need to apply an astringent separately

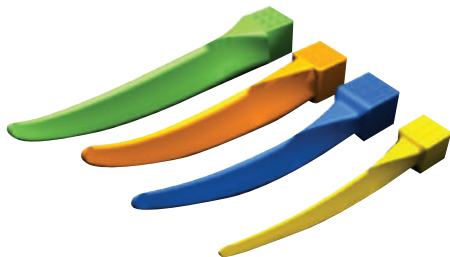
A+Wedge™

Kit	Description	Qty.
GWAK4	A+ Wedge™ Kit 200 pcs. / 50 ea.size	200 pcs.
Refills		
GWAYL	X-Small Yellow Refill	100 pcs.
GWABL	Small Blue Refill	100 pcs.
GWAOR	Medium Orange Refill	100 pcs.
GWAGR	Large Green Refill	100 pcs.



G-Wedge™

Perfect wedge. Perfect contact.



If you prefer traditional wedge placement with either a hemostat or cotton pliers, G-Wedges give you the same great shape as Wedge Wands, just without the applicator wand.

G-Wedge™

Kit	Description	Qty.
GWK4	G-Wedge™ Kit 400 pcs. / 100 ea. size	400 pcs.

Refills

GSWYL	X-Small Yellow Refill	100 pcs.
GSWBL	Small Blue Refill	100 pcs.
GSWOR	Medium Orange Refill	100 pcs.
GSWGR	Large Green Refill	100 pcs.

SoftWedge™

Superior adaptation and seal



The first wooden wedge designed for use with a sectional matrix system

Soft Wedges are wooden interproximal wedges that have been optimized for use with modern restorative materials. The ability to compress during insertion, then swell to help fill voids insures that your preparations stay clean and dry – an absolute must for today's bonded restorations! Soft Wedges are longer than regular wedges to allow for easy adjustment under the ring. They are made of American bass soft wood for best adaptability and form.

Soft Wedge™

Kit	Description	Qty.
WDK4	Soft Wedge™ Kit 400 pcs. / 100 ea. size	400 pcs.

Refills

WDYL	X-Small Yellow Refill	300 pcs.
WDBL	Small Blue Refill	300 pcs.
WDOR	Medium Orange Refill	300 pcs.
WDGR	Large Green Refill	300 pcs.

BlueView™

VariStrip™

Contoured Anterior Matrices

The Blue View VariStrip™ is a revolutionary contoured anterior matrix providing the optimum curvature and band height for virtually every anterior restoration. The 0.05 mm thin plastic anatomical strip is tapered from one end to the other. You can place the strip interproximally and then slide it until the tooth height is perfectly matched. The pre-contouring easily recreates the occluso-gingival anatomy, avoiding flat embrasures.

Curved Form: Provides the optimum curvature and band height for virtually every anterior restoration.

Blue Tint: Provides contrast between matrix and tooth structure without compromising composite polymerization.

Variable height
from 6 -10 mm
correct height for all anterior teeth



Dr. Gabriele Conte,
Italy

- Avoids incorrect flat embrasures, black triangles and food traps that old-fashioned straight mylars sometimes produce.
- Excellent for class 4's, diastema closures, etc.

Blue View VariStrip™

Item	Description	Qty.
VS02	VariStrip™	50 pcs.
VS01	VariStrip™	100 pcs.

SlickBands™

Tofflemire-style



Kit
SMTK06

Introducing the new Margin Elevation Band!

The deep margin elevation technique is a useful non-surgical approach to treating deep localized margins.



Description

Slick Bands SMTK06 Kit Tofflemire Style

300 Bands in 9 sizes

100 G-Wedges in 4 sizes

PerForm contact instruments (1 for small and 1 for large cavities, see page 21)

**When a sectional matrix just
won't do: The Slick Bands
Tofflemire-style Matrix Kit will!**

All kits come with a 60-day-money-back-guarantee.

Please register your kit today by phone +49 (0) 2451 971-409 email to info@garrisdental.net or send us your order form via fax +49 (0) 2451 971-410.

Slick Bands™ Tofflemire-style Matrices

Non-stick technology developed by Garrison: Modern bonding agents can adhere to uncoated matrix bands –Slick Bands slide right out.

Reaches over to the adjacent tooth more easily to help you create broader, deeper contacts.



Tighter gingival seal is beneficial for all restorations

Traditional band with narrow 'funnel.'



Proprietary Right Curve™ design:

The increased curvature of the all-new Right-Curve matrix band produces outstanding gingival seal and reaches over to adjacent teeth easier for broader, deeper contacts. This creates a significantly increased funnel-shaped cone when wrapped around a tooth. It's the right choice for many restorations.



Margin Elevation Band

A margin elevation matrix will give you the best gingival adaptation and contour for the deep margin areas. The margin elevation matrix is trimmed in height to allow improved adaptation to deep margin areas.

NEW



SMT500H10-M Margin Elevation Band

- Extremely wide preps are simplified.
- Improved visibility for core buildsups.

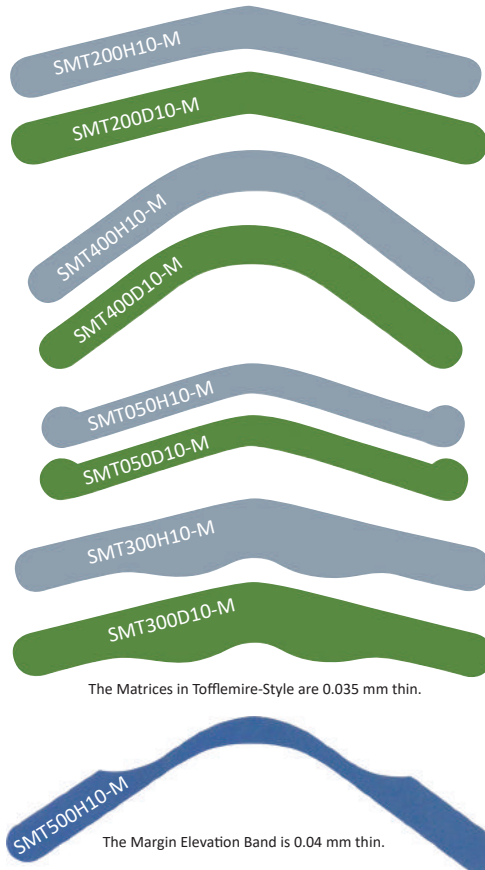
Slick Bands™ Tofflemire-style Matrices

#1 Universal for general restorations

Right-Curve™ matrices provide a lower contact point and improved isolation. Excellent for all restorations.

#13 Pedodontic for short and primary teeth

#2 Sub-gingival for deep restorations



Clinical Tip: Use dead-soft green bands when contact is COMPLETELY broken with adjacent teeth for maximum burnishability.

When contact is NOT broken with adjacent teeth, use gray bands, placed between contacts with minimal deformation.

Slick Bands™

Part No.	Description	Qty.
Dead-soft bands with non-stick coating (green)		
SMT200D10-M	#1 Universal Tofflemire	50 pcs.
SMT400D10-M	Right-Curve	50 pcs.
SMT050D10-M	#13 Pedodontic	50 pcs.
SMT300D10-M	#2 Sub-gingival	50 pcs.
Regular Bands with non-stick coating (gray)		
SMT200H10-M	#1 Universal Tofflemire	50 pcs.
SMT400H10-M	Right-Curve	50 pcs.
SMT050H10-M	#13 Pedodontic	50 pcs.
SMT300H10-M	#2 Sub-gingival	50 pcs.
Margin Elevation Band (blue)		
SMT500H10-M	Margin Elevation Band	50 pcs.

Composi-Tight™ Matrix Forceps

Precise Placement, Unbeatable Grip.

Precise Placement: The tips have a 75-degree angle with an occlusal-gingival orientation, providing a more appropriate placement angle than cotton forceps. The petite, carbide tips allow the matrix to be grasped at its upper edge to prevent distortion of the interproximal area of the band.

Unbeatable Grip: The tungsten carbide tips provide exceptional grip and tactile control for tough access cases.



BFA-1

Only for Matrix Bands.

Matrix Forceps

BFA-1

Angled tip for occlusal placement

Universal Forceps

Holds all your rubber dam clamps and sectional matrix retainer rings.



UNVF-100



Universal forceps

UNVF-100

Universal forceps

Ring Placement Forceps

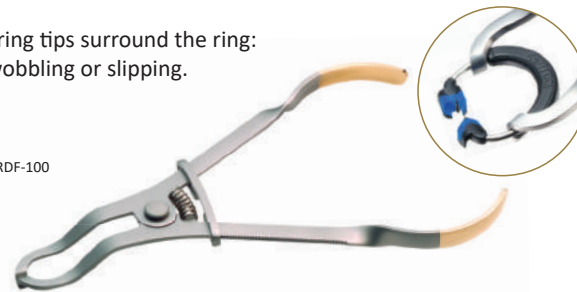
Holds all your sectional matrix system rings.

Updated grip to easily spread rings with less hand fatigue, even over large molars.

Can be used on all popular sectional matrix rings.

The ring tips surround the ring: no wobbling or slipping.

AUMRDF-100

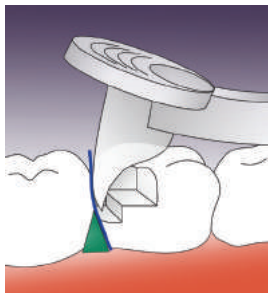


Ring Placement Forceps

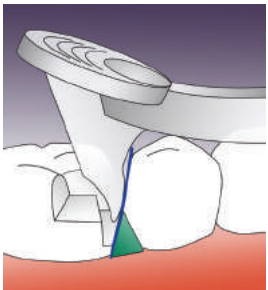
AUMRDF-100

Ring Placement Forceps

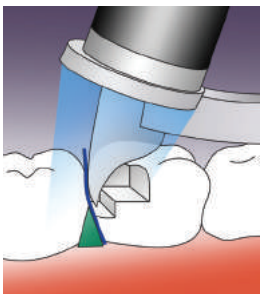
How PerForm works:



STEP 1:
Place the first composite increment. Press PerForm into the uncured composite increment and either push (distal; fig. 1)



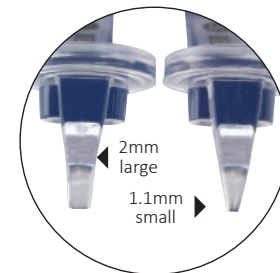
or pull (mesial, Abb. 2)



STEP 2:
Place the curing light directly on the Fresnel lens and cure.

PerForm™

Proximal Contact Instruments



PerForm™ puts you in control.

- Improves contacts with any matrix system
- Controls the height and breadth of contacts
- Increases the tightness of contacts
- Unique lens controls curing light diffusion

PerForm™

Item	Description	Qty.
CFK01	PerForm™ set	1/ea. size
CF100	1,1 mm Small Instruments	2 pcs.
CF200	2,0 mm Large Instruments	2 pcs.

Dr. Jack D. Griffin, Jr. USA

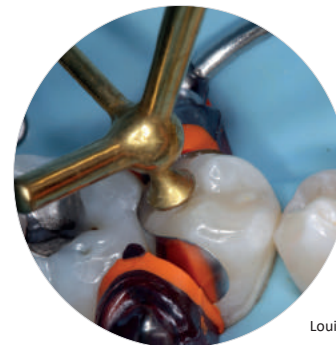
“To ensure a tight contact a bulk fill flowable was placed in one proximal box at a time and the mylar held against the adjacent tooth with a “PerForm” proximal contact instrument.

This ensures that the contact is tight and well-formed while light curing though it.”

Composite Instruments Nonstick titanium-nitride coated

Our multi-function instruments have double condenser configurations and carving blades on opposite ends. Now you can place, pack, shape and carve your way to perfectly contoured composite restorations without ever having to switch instruments!

- Large-diameter, lightweight handles for improved ergonomics.
- Provides non-stick surface for placement and shaping of composites.
- 40% smoother than stainless steel for a non-porous, non-stick surface.
- Withstands diverse cleaning/sterilization methods, including ultrasonic cleaning.



TN009,
Louis Mackenzie,
UK



TN008

5-in-1

Item
TN008

Description
5-in-1 Multi-Function Instrument
2 condensers, ball burnisher, blade, acorn



TN009

5-in-1

Item
TN009

Description
5-in-1 Multi-Function Instrument
2 blades, 2 condensers, acorn

Double Cord Packer



TN010

Item
TN010

Description
Double Cord Packer
2 serrated blades, 2 non-serrated blades

A simple twist of the instrument allows you to maneuver around the tooth without ever leaving your field of view. Perfect for use with loupes and microscopes.

Composite Instruments



TN001

Item
TN001

Description
Medium Blades

- Placement of composite material
- Gingival retraction to sculpt under free margins
- Burnishing matrix bands



TN002

TN002

Medium Blade with Medium Plugger

- Contouring small Class I, II, V
- Packing composite material into conservative preparations
- Burnishing matrix bands

Composite Instruments

Item **Description**
TN003 **Medium Blade with Large Plugger**

- Contouring large Class I, II, V
- Packing composite material into large preparations
- Convex plugger tip minimizes pullback of composite material

TN003



TN004 **Extra Thin Blades**

- Reach under margins to hone and sculpt
- Sculpting interproximally
- Packing cord in gingival crevice

TN004



TN005 **Long Extra Thin Blades**

- Allows additional access for hard-to-reach
- Posterior contouring and shaping
- Sculpting interproximally
- Packing cord in gingival crevice

TN005



TN006 **Small/Medium
Multi-Function Plugger**

- Placement of composite material in smaller Class II and III
- Packing material toward gingival seats
- Carving occlusal anatomy with acorn carver

TN006



Fit Strip

Flexible
Interproximal
Twistable

NEW!



FPSK01

The FPSK01-Set contains:











- 2 handles
- 2 serrated FitStrips
- 4 single-sided FitStrips of each grit
- 4 double-sided FitStrips of each grit

FitStrip™ Interproximal Finishing and Contouring System

- Serrated strips and diamond abrasive Strips with interchangeable handles for safe and easy use in the patient's mouth.
- A simple twist of the color-coded barrel adjusts the strip from straight to curved and is perfect for:
 - *interproximal contouring of composit fillings (curved form)*
 - *contact reduction before or after the restoration (straight form)*
- Best solution for IPR (interproximal reduction) with orthodontic treatments such as Clear Correct™, Invisalign™, Six Month Smiles™.
- Multiple cleaning and sterilisation cycles



FitStrip™: single sizes contained in starter set

single sided Strips					
part No.	FPSXFSS	FPSFSS	FPSMSS	FPSCSS	FPSSAW
thin	0.08 mm	0.10 mm	0.13 mm	0.18 mm	0.05 mm
	super fine / gelb 15 µm	fine / rot 30 µm	medium / blau 46 µm	coarse / grün 90 µm	serrated
double sided Strips					
part No.	FPSXFDS	FPSFDS	FPSMDS	FPSCDS	FPSSAW
thin	0.11 mm	0.15 mm	0.21 mm	0.30 mm	0.05 mm

All sizes can be ordered separately. Please call us for further information.



All-New eZr™ polishers enable clinicians to easily and safely adjust and polish both **zirconia** and **lithium disilicate**.



- 1 Start by gross adjusting and contouring using the blue coarse grit grinders. Use the flat end taper for occlusal/labial/lingual/buccal surfaces and the disc for interproximal surfaces.



- 2 Use the green medium grit polishers for smoothing and pre-polishing. Use the point for the occlusal grooves, the cup for labial/lingual/buccal, and the disc for interproximal surfaces.



- 3 Use the orange fine grit polishers for high gloss polishing. Use the point for the occlusal grooves, the cup for labial/lingual/buccal, and the disc for interproximal surfaces.



FPZK01-X - eZr™ Kit



FPZK01-X - eZr™ Kit

Kit with 2 grinders and 6 polishers

2 grinders for gross removal (blue)

3 polishers for smoothing and pre-polishing (green)

3 polishers for high gloss polishing (orange)











Try without risk with the 60-day-money-back guarantee!

Making adjustments for you!

The correct processing of zirconia has been a controversial issue for a long time, due to the risk of microfracturing. Finishing with the appropriate instruments is now possible and produces long term stability of the restoration.

The eZr™ Polishing System provides a processing solution that not only produces a high gloss finish on zirconia, but increases the physical stability through polishing. Highly polished stable zirconia surfaces are now attainable. The polishers have a long life, and in combination with a high material removal rate, allow for an economic and fast processing system to get to glossy in seconds, without polishing paste.

- Enables easy and safe adjustment for zirconia and lithium disilicate.
- Proprietary diamond impregnated polisher reduces possibility of chipping and microfracturing.
- Provides an unparalleled smoothly polished occlusal surface, eliminating abrasiveness to opposing dentition.
- Prevents over-heating that could lead to premature failure.
- Eliminates the need for polishing paste, reducing overall cost per procedure.

	Order	Description	Grit
	FPZC030-X	Blue coarse grit disc gross removal, 5/pack	Gross removal
	FPZC010-X	Blue coarse grit flat end taper gross removal, 5/pack	Gross removal
	FPZM010-X	Green medium grit small point polisher, 5/pack	Smoothing and Pre-Polishing
	FPZM020-X	Green medium grit large point polisher, 5/pack	Smoothing and Pre-Polishing
	FPZM030-X	Green medium grit disc polisher, 5/pack	Smoothing and Pre-Polishing
	FPZM040-X	Green medium grit cup polisher, 5/pack	Smoothing and Pre-Polishing
	FPZF010-X	Orange fine grit small point polisher, 5/pack	High Gloss Polishing
	FPZF020-X	Orange fine grit large point polisher, 5/pack	High Gloss Polishing
	FPZF030-X	Orange fine grit disc polisher, 5/pack	High Gloss Polishing
	FPZF040-X	Orange fine grit cup polisher, 5/pack	High Gloss Polishing

Key-Opinion Leaders working with Garrison products



Dr. Martin von Sontagh, Hard, Austria

"I use the Composi-Tight 3D XR System in almost all Class II restorations, as it is a simple and reliable system. Thanks to the quick and easy placement of the rings, you can easily get tight contact points. As the rings have a very tight fitting, composite excess is minimized and the finishing time is reduced.

If the system once is in place, there is no jumping or slipping anymore. The results are anatomically wellshaped contact points and functional restorations."



Dr. Walter Denner, Fulda, Germany

"The Composi-Tight 3D sectional matrix system enables the production of tight, anatomically contoured approximal contacts in an easy and reproducible manner. The sectional matrices with colour on the inside also give a very good contrast and facilitate the layering of the composite materials. The strong 3D-ring ensures that the matrix adapts well to the remaining tooth and has

space for an interdental wedge so that flash is easily reduced. For tight areas the smaller ring can be used so that almost 100% of all class II restorations in the lateral tooth area can be covered with this system."



Louis Mackenzie, Birmingham, UK

"The revolutionary design of the Garrison TN009 multi-function composite instrument makes it ideal for precise placement and shaping of direct composite restorations. With five non-stick tips it allow fast, efficient, predictable shaping of occlusal anatomy. If you only buy one

specialised composite instrument the TN009 could not be a better investment."



Dr. Carlos Fernández Villares, Madrid, Spain

"The matrix bands and rings from Garrison enable us to achieve restorations that are anatomically identical to the natural tooth, with contact points and areas that allow for adequate function and esthetics."



Dr. Rodolphe Zunzarren, Biarritz, France

"The VariStrips from Garrison bring several important characteristics together which make them perfect for anterior restorations:

- *The blue colour allows a perfect visibility without interference of the photopolymerisation*
- *Thanks to different sizes in one band, the VariStrips are easily adjustable for different heights of the cavity or different restoration angles*

- *The curved form allows an anatomical restoration of the proximal teeth form and of the contact points*

Being both rigid and thin, the VariStrips are easy to insert and thanks to the minimal thickness of the bands, they allow a perfect reconstruction of the contact point."



Dr. Matthew Holyoak, Lytham St. Annes, UK

"The 3DXR ring from Garrison Dental Solutions is a significant improvement on all previous rings; it is truly universal and I have not found any Class II restoration that it will not fit. The 3DXR has not flown across the room once! When used with the sectional matrices, and wedge wands (or A+ wedges), the system helps

provide a tight anatomical contact area and highly predictable posterior composite restorations every time."