



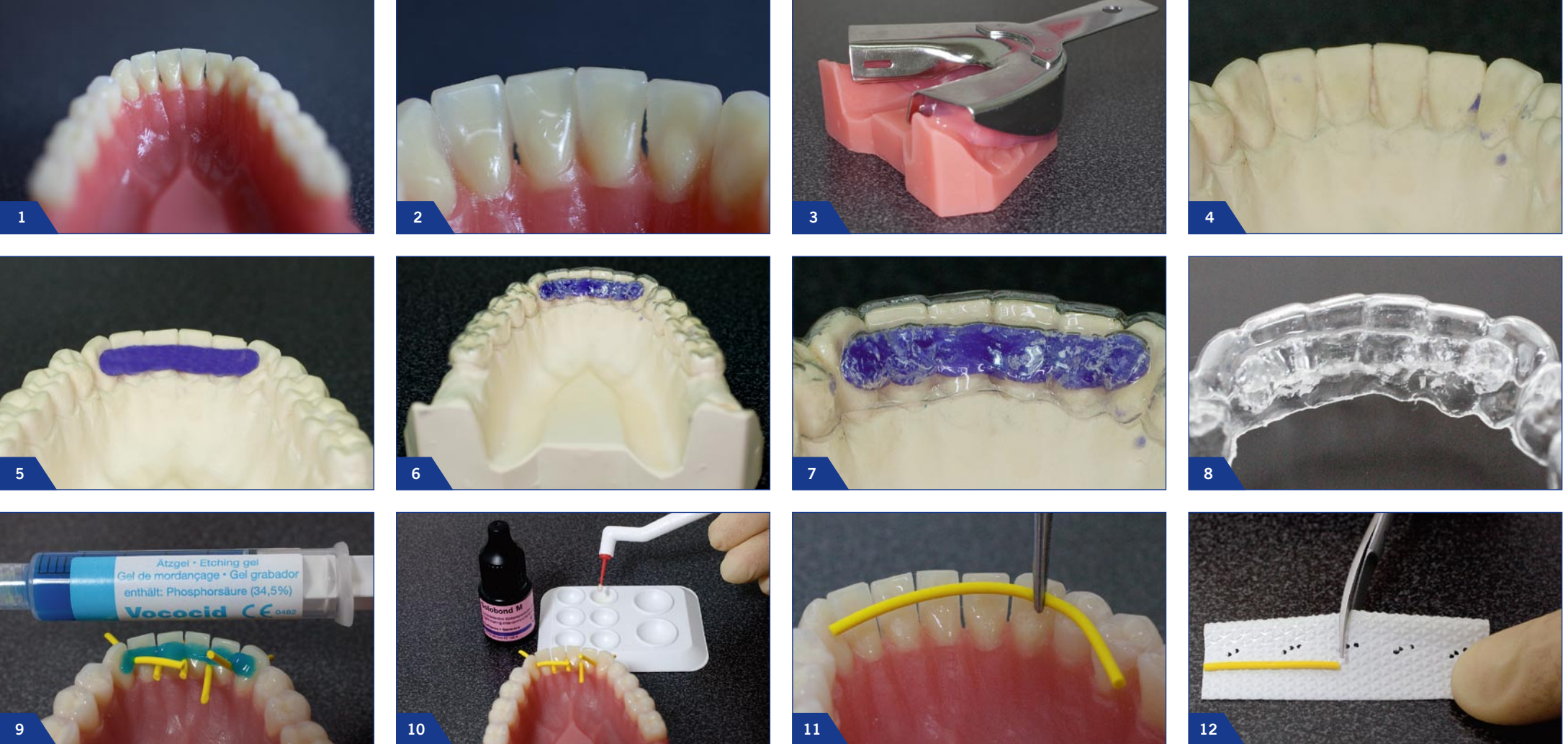
GrandTEC Instruction Page 1/2

Ersatz eines extrahierten Zahnes, indirekte Methode (labside) unter Verwendung einer Tiefziehschiene
 Replacement of an extracted tooth, indirect method (labside-use) using a deep-drawing tray



GrandTEC Instruction Page 2/2

Ersatz eines extrahierten Zahnes, indirekte Methode (labside) unter Verwendung einer Tiefziehschiene
Replacement of an extracted tooth, indirect method (labside-use) using a deep-drawing tray



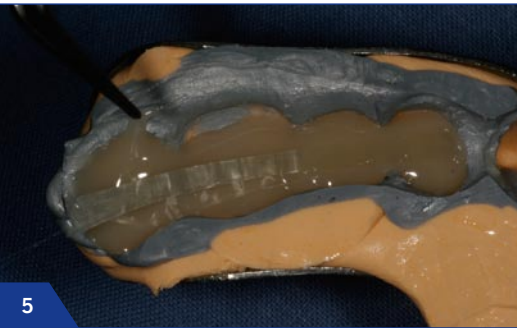
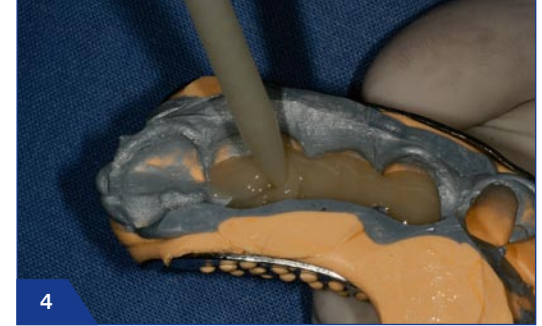
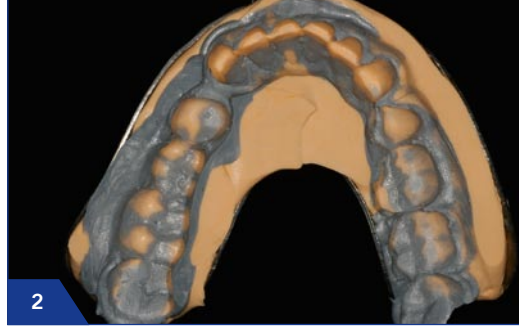
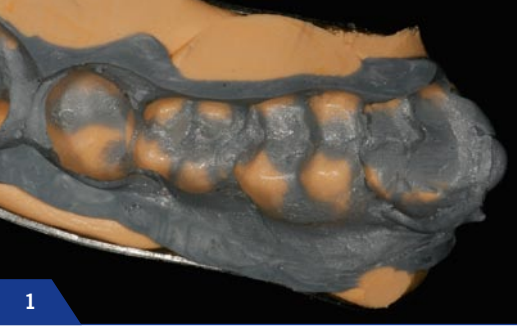
GrandTEC Instruction Page 1/2

Schienung von Zähnen, indirekte Methode (labside)
 Splinting of teeth, indirect method (labside-use) using a deep-drawing template



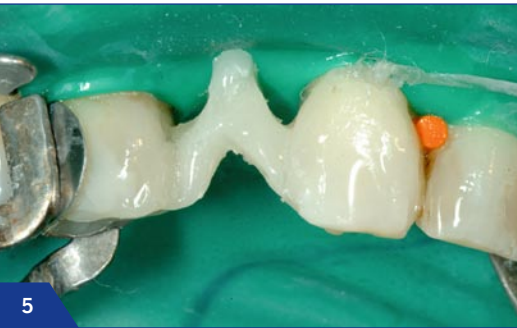
GrandTEC Instruction Page 2/2

Schienung von Zähnen, indirekte Methode (labside)
Splinting of teeth, indirect method (labside-use) using a deep-drawing template



GrandTEC Instruction

Verstärken einer provisorischen Brücke mit GrandTEC
Reinforcing a temporary bridge with GrandTEC



GrandTEC Instruction

Direkt modellierter Lückenschluß im Prämolarenbereich
Space closure in the pre-molar area