

easy,
just better

for
perfectionists



Implant Mask

Flexible gingival mask – easy to trim

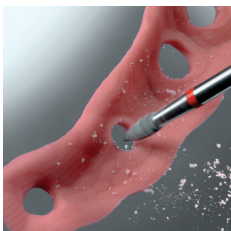


- Equal flow around the abutments due to **excellent flow capacities**

- Perfect reproduction: Gingival sulcus, papilla and all important tissue sections. Unlimited re-application, **permanent dimensional stability**.

- Perfect working** through optimum final hardness of 70 Shore A.

- Universal and safe isolation by means of **separating agent** for all A and C silicones and also for Polyether.



mini-mix
cartridges

02529 standard packing

2 x 10 ml mini-mix cartridges
6 mixing cannulas, light-green
15 ml Separating Agent

